

UNIVERSITY OF MISSOURI EXTENSION

Perry County

ANNUAL REPORT 2023

321 North Main Street, Suite 1
Perryville, MO 63775
573-547-4504



Office of Extension
and Engagement
University of Missouri

**OFFICE OF THE VICE CHANCELLOR
FOR EXTENSION AND ENGAGEMENT**

108 Whitten Hall
Columbia, MO 65211

PHONE 573-882-2394

EMAIL: cchiggins@missouri.edu

December 2023

Dear county commissioners and friends of MU Extension and Engagement,

Thank you for your important partnership with the University of Missouri Extension this past year.

I want to highlight three areas that address needs you helped us identify.

You may recall that the FY 23 state budget provided a one-time \$5 million infusion to MU Extension for growth. Of that, we allocated about \$3 million for field faculty in the areas of agriculture, 4-H, health/human development and business and community development.

Through a dedicated hiring effort, and thanks to that allocation, we have hired 168 new employees since November 2022. That includes 72 academic/faculty members, most of whom are field specialists in a priority area noted above, and 96 staff members (e.g., office administrators, youth and food and nutrition associates, etc.).

We also returned more faculty to local program delivery that best serves your county's needs, while preserving the partnership and relationship building work you value. Our extension and engagement specialists focus full-time on that work as they serve their assigned multi-county groups. Currently, 19 have been hired, with two more in the pipeline.

Finally, we are prioritizing our work with county extension councils. In the new role of partnership and council development director, Lorin Fahrmeier focuses on strengthening council representation and governance. This role will build stronger links with regional, educational and campus leadership to better identify and address local priorities.

At the UM System level, our engagement work across four universities and with leaders across the state makes a difference in areas of greatest need: broadband, workforce development, health access, food security and healthy futures for our youth.

Your county annual report shows what we are accomplishing together as we Serve Missouri and Deliver Mizzou. We look forward to strengthening that partnership with county commissioners and community stakeholders in the coming year.

Sincerely,

Chad Higgins, PhD
Interim Vice Chancellor, MU Extension and Engagement
Chief Engagement Officer, UM System

Who we are

Faculty and staff

Stephane Schindler

Extension and Engagement Specialist

Bethany Bachmann

Field Specialist in Nutrition and Health Education

Dianna Koenig

4-H Youth Development Associate

Vacant

Nutrition Program Associate

JoAnn Steffens

Administrative Assistant

Staff serving Perry County

Brad Coleman

Field Specialist in 4-H Youth Development

Donna Aufdenberg

Field Specialist in Horticulture

Sarah Denkler

Regional Director

Nancy Keim

EFNEP Associate Director

Anthony Ohmes

Field Specialist in Agronomy

Reta Reed

FNEP Program Manager

David Reinbott

Field Specialist in Agricultural Business

Clayton Skelton

4-H Youth Development Educator

Council members

Marsha Buchheit, President

Angie Mezo, Vice-President

Angelia Schuessler, Secretary

Teresa Leible, Treasurer

Shannon Allison

Garrett Behrle

Dana Christisen

Jared Cochran

Hannah Fritsche-Donze

Jennifer Janet

Joanie Robinson

Mark Roth

Natalie Fritsche-Kasten, Appointed

Keith Hoehn, Appointed

David Lohmann, Appointed

Sean Unterreiner, Appointed



County commissioners

Mike Sauer, Presiding Commissioner

Jay Wengert, First District Commissioner

Keith Hoehn, Second District Commissioner

Financials and More

Receipts and Expenditures 2023

Income

County Appropriations	49,700
Total Income	49,700

Expenses

Salaries/Benefits	40,298
Non-Payroll Salaries	250
Travel	2,832
Telephone	1,500
Office Supplies/Service	1,720
Postage	250
Advertising	500
Insurance	2,000
Miscellaneous	350
Total Expenses	49,700

Return on Investment

University System Investment in Perry County	130,000
Program Revenue from Outside Resources	24,650

Key Outcomes and Numbers

- ✓ **9,729 total educational contacts by MU Extension**
 - 9,519 contacts related to healthy eating and aging, strengthening families, personal finance, or youth development.
 - 184 contacts related to productive farming, better gardening, and managing natural resources.
 - 26 contacts related to starting businesses, developing community leaders or renewing the local economy.
- ✓ 231 soil samples tested (199 agronomy samples, and 32 horticulture samples.)
- ✓ 1,319 Perry County youth participated in the 4-H Program.
- ✓ Private Pesticide Applicator Training was provided to 31 Perry County residents.

MU Extension is a unique funding partnership.

Extension funding is a three-way partnership of federal, state and county government. Federal and state money, through the University of Missouri system, pay professional staff salaries, training costs, computers and communication equipment. County funds support the local office, secretarial and youth associate salaries, staff mileage and council expenses.

The Perry County Extension Council, faculty and staff would like to express our appreciation to the Perry County Commissioners for their continued support of extension programs.



Local Support

Did you know you can donate directly to Perry County Extension with a gift to be used immediately or as an endowment contribution for long term efforts. Monies put into the endowment are left forever to earn interest with the county office benefiting each year. You can also direct your donation to a specific program such as 4-H or Master Gardeners. To donate visit: <https://extension.missouri.edu/counties/perry/donate>



County highlights

2023 State Fair Farm Family

The Fritsche family was selected as the Perry County Farm Family by University of Missouri Extension and the local Farm Bureau. Beyond John and Jennifer, the family includes Lucas, Hallie and Landon.

Each year, the fair sets aside a day to recognize farm families from across the state who are active in their communities, involved in agriculture, and/or participate in local outreach and extension programs such as 4-H or FFA.

The annual event is sponsored by five partner agencies: the Missouri Farm Bureau; the Missouri

Department of Agriculture; the Missouri State Fair Commissioners; the MU College of Agriculture, Food and Natural Resources; and MU Extension and Engagement. The event showcases the impact Missouri Farm Families have on the economy and heritage of the state, said Missouri State Fair Director, Mark Wolfe. "These families are involved in agriculture activities in their communities and are active participants in local outreach and extension. As the premier showcase for Missouri agriculture, the Missouri State Fair is most certainly the appropriate place to celebrate these families."



(Front Row) John, Halie, Lucas, Landon and Jennifer Fritsche and (Back Row) State Fair officials.

Feeding Perry County Food Drive

In conjunction with the 4-H Feeding Missouri statewide food drive, and to raise awareness about food insecurity in Perry County the Perry County Extension Council, Perry County 4-H Council, and SNAP-ed ("Supplemental Nutrition Assistance Program-Education is a federally funded grant program. It is an evidence-based program that helps people lead healthy, active lives by partnering with state and local organizations.") Posters were made to advertise the project and shared on Facebook with a total of 2,811 post reaches and they were also emailed out to our email lists.

Food collected for this project: January-360 pounds of peanut butter, February-212 pounds of vegetables, March-93 pounds of fruit, and April-63 pounds of protein/beans for a total of 730 pounds of food. Cash donations of \$349.25 were also accepted.

Perry County Teen Council and other Perry County 4-H Clubs volunteered at other venues packaging food for food distribution centers.

Food was distributed to First Baptist Church who reach 240+ families monthly, Ladies of Charity who reach 120-200 families monthly and Perryville United Methodist Church where the food is put into their Little Free Food Pantry. Each organization was also given recipes to be distributed using the item of the month.



Ladies of Charity March and April Food Donation



First Baptist Church January food donation.



Perryville United Methodist Church food donation.



County highlights

Missouri Century Farm Families

The Missouri Century Farm Program began during the Bicentennial year of 1976 and since that year 171 farms have been recognized in Perry County. Guidelines for recognition are the same family must have owned the farm for 100 consecutive years, the present farm consist of no less than 40 acres of the original and make a financial contribution to the overall farm income. In 2008 Farm Bureau along with the College of Food and Agriculture and University of Missouri Extension became a sponsoring organization of the program. In 2023 Perry County had nine farms that were recognized as Century Farms.



The Vernon and Patricia Berkbigler Family Farm was purchased in 1901.



The Roy and Cheryl Braeuner Farm was purchased in 1853.



The Rellerkert Farm was purchased in 1901 and is owned by David and Peggy Rellerkert and Kevin and Donna Brown..



The Robert and Wanda Courtois Family Farm was purchased in 1902.



The D & R Farms, Inc. owned by Janice Cole was purchased in 1881.



The Clarence and Mildred Grebing Farm was purchased in 1920.



The Hoff Family Farm owned by Tom, Bill and Bob Hoff and Danita Loucks was purchased in 1871.



The Richard and Jeanne Mattingly Family Farm was purchased in 1916.



The Moore Family Farm owned by John Moore and Mary McClain was purchased in 1801.



County highlights

Bethany Bachmann Presents and Wins Awards at the NEAFCS Annual Meeting

Bethany Bachmann made a presentation on “Freeze It!” a pilot program to reduce food waste at the National Extension Association of Family and Consumer Sciences (NEAFCS) Annual Meeting in Providence, Rhode Island. This program was piloted in Perry County in November. Other presenters from Missouri included: Rachel Buenemann and Carrie Elsen.

Missouri team presentation at the NEAFCS Annual Meeting in Providence, Rhode Island.



Bethany Bachmann's presentation



Environmental Education Award - Central Region Winner

Family Health and Wellness Award - 1st Place Central Region Winner

Perryville Area Chamber of Commerce

Each year community business and organizations are given the opportunity to sponsor and decorate a table for the Perryville Area Chamber of Commerce Annual Dinner. The Perry County Extension Council did this for the second time in 2023. The table theme was “MIZ-ZOU!” The group that sat at the table was super excited about all their Mizzou and University of Missouri Extension goodies.



Perry County Extension's Table at the Chamber of Commerce's Annual Dinner

Leaders Honor Roll

The Leader's Honor Roll program is intended to honor outstanding University of Missouri Extension community leaders who have excelled in supporting or co-teaching named programs. Those honored for their service will have their names engraved on a plaque at the University of Missouri – Columbia campus. In 2023, Pastor Kevin Barron from Perryville Methodist Church was honored as the Leaders Honor Roll Recipient for his long-term commitment and support of Perry County Extension.



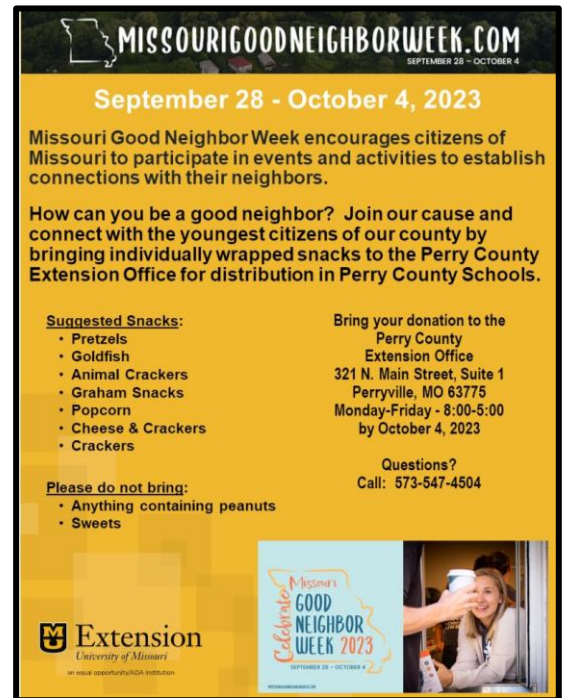
Pastor Kevin Barron Leaders Honor Roll recipient.



County highlights

2023 Good Neighbor Week

Missouri's Good Neighbor Week was celebrated September 28 to October 4, 2023. The mission of Perry County Extension was to collect snacks for Perry County Schools. Many teachers in the county purchase snacks for their students out of their own pockets since many families can not afford extra snacks for their children. A hungry child does not concentrate and learn. A mass email was sent out, and posts were made on Facebook advertising our project. A cash donation was received within hours of sending the mass email and snack donations started to come into the office days later. All donors received an Eat Smart like a Tiger bag with a frisbee, jar opener and strainer. Donations were received from more than 25 community members totaling more than 1,100 servings. Snacks were distributed to Perry County School District #32 and Immanuel Lutheran School.



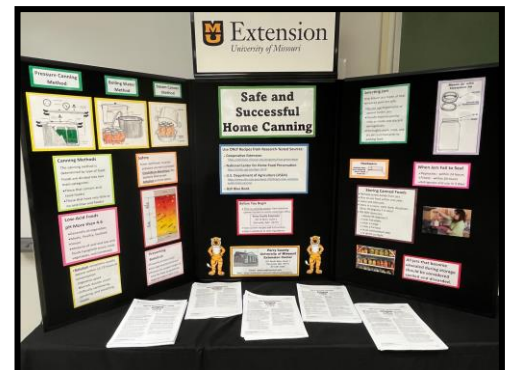
Good Neighbor Week promotional flier.



Snacks donated to the Perry County Extension Office during Good Neighbor Week.

2023 East Perry Community Fair

Each year the Perry County Extension Council sets up a display board at the East Perry Community Fair in September. In 2023 the theme of the display board was "Safe and Successful Home Canning." The Extension Council display board was well received. This year there were a record number of people looking at the booth and taking handouts. Very few handouts were brought back to the office. All the seed packets we took were gone on Friday and visitors were asking for more. Instead of doing an attendance prize, visitors were given bright yellow Eat Smart Like a Tiger bags and pasta spoons. The yellow grocery bags were a huge hit. All 600 of the bags and 450+ pasta spoons given out. There were times that there was a line of people waiting for a bag. It was great to see so many yellow Tiger bags all over the fair grounds.



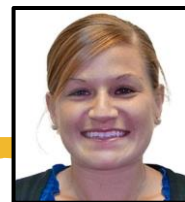
East Perry Community Fair display board.



Eat Smart like a Tiger bags and Pasta Spoons given away at the fair.



Health & Well-being



Stay Strong, Stay Healthy, Tai Chi, and Senior Nutrition Courses Funded by Local Grant

Bethany Bachmann, Field Specialist in Nutrition and Health Education

In 2023, Bethany Bachmann applied for and was awarded \$4,000 from the Perry County Senior Tax Commission to fund physical activity and nutrition courses for Perry County residents age 55 and older. With this funding, Bethany provided a Seasoning with Less Sodium course, four Stay Strong, Stay Healthy courses and one Tai Chi course in Perryville. In total, 49 participants took part in the courses which are designed to improve strength, flexibility, agility, and balance which in turn decreases the risk of falling and allows participants to live an independent life for a longer period.



Tai Chi class participants.



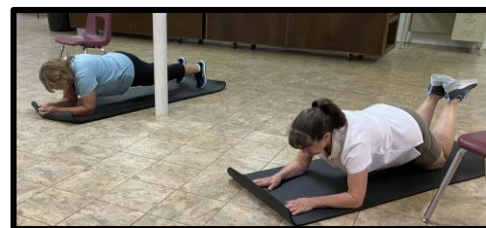
Cooking with Less Sodium class participants prepare lower sodium seasoning mixes.

Total medical cost savings for Perry County residents participating in the Stay Strong, Stay Healthy and Tai Chi programs was \$36,014 in 2023.

HEED Grant Funding for Stay Strong, Stay Healthy Level 3 – Pilot Program

Bethany Bachmann, Field Specialist in Nutrition and Health Education

As state program leaders looked to add a third level of the Stay Strong Stay Healthy program, Bethany Bachmann was asked to lead a pilot course for the program in Perry County. Five previous Level 2 participants attended the 16-session pilot course in the summer of 2023. The pilot program is an advanced version of the Stay Strong, Stay Healthy program that focuses on more dynamic movements, with a faster pace and heavier weights. For this program, Bethany applied for \$500 from the Human Environmental Sciences Extension Development Funds (HEED) to purchase heavier weights and a storage cabinet for Perry County. Funding was awarded and utilized in the summer of 2023.



Stay Strong, Stay Healthy Level 3 participants hard at work.

2023 Program Reach

- 3,540 direct programming and engagement contacts
- 51,550 indirect programming and engagement contacts including KFVS12 livestream views, news articles, the Garden Spade Newsletter, health fairs, meetings and presentations.
- National Extension Association of Family and Consumer Sciences (NEAFCS) Awards and Presentations:
 - First Place National and Central Region, Family Healthy and Wellness
 - First Place Central Region, Environmental Education
 - Poster presentation and concurrent session presentation on the Freeze It! Curriculum project at the NEAFCS Conference in Providence, RI



Health & Well-being

SNAP-ED in Perry County

The Supplemental Nutrition Assistance Program Education (SNAP-Education or SNAP-Ed) brought \$10,874,798 in federal funds to Missouri. During FY2023, Missouri's SNAP-Ed program reached over 78,000 Missourians through direct classroom education. Each person participated in an average of six hours of education totaling over 15,000 hours. In addition, an additional 760,135 persons participated in indirect education. Direct and indirect education resulted in over 1.8 million total contacts with Missourians.

A total of 688 participants were from Perry County.

Participants in SNAP-Ed learn the importance of making healthier meals and snack choices, eating breakfast more often, are more willing to try new foods, increase their physical activity, and make healthier food choices. Those who practice healthy eating and are physically active are more likely to contribute to a healthy labor force and enjoy a high quality of life throughout the lifespan. This vital programming effort also reduces healthcare costs over the participant's lifetime, saving taxpayer money in reduced public healthcare benefits and insurance premiums.

Spring Into Wellness Expo

On March 4, 2023, Bethany Bachmann, Field Specialist in Nutrition and Health Education and Mandie Kiszczak, Nutrition Program Associate represented MU Extension at the 2023 Spring Into Wellness Expo in Perryville. Katie Kammler, Field Specialist in Horticulture, also attended the event and provided a demonstration on container gardening. Approximately 180 individuals attended the expo. Information was provided on the benefits of eating fruits and vegetables, healthy recipes, home food preservation, and gardening. Participants were also able to sign-up for our email list to be notified of upcoming programs in the county. The event was a great success, and the planning committee was very appreciative of all we offered to participants.

EFNEP in Perry County

The Expanded Food and Nutrition Education Program (EFNEP) brought \$1,626,730 federal funds to Missouri. These funds were used to enroll 526 limited-resource families in nutrition education and meal preparation classes, representing 1,926 family members. Additionally, 1,980 youth were enrolled in EFNEP classes.

Fifty-three of these youth and adult participants reside in Perry County.

Participants in EFNEP learn the importance of making healthier meals and snack choices, eating breakfast more often, trying new foods, increasing their physical activity, and making healthier food choices. Those who practice healthy eating and are physically active are more likely to contribute to a healthy labor force and enjoy a high quality of life throughout the lifespan. This vital programming effort also reduces healthcare costs over the participant's lifetime, saving taxpayer money in reduced public healthcare benefits and insurance premiums.



Katie Kammler, Field Specialist in Horticulture, Bethany Bachmann, Field Specialist in Nutrition and Health Education, and Mandie Kiszczak, Nutrition Program Associate, represented University Extension at the Spring Wellness Expo in Perry County.



Educational Access & Excellence



4-H Youth Development

Dianna Koenig, 4-H Youth Program Associate

The Perry County 4-H Youth Development program had 1,319 youth participants in 2023. These youth participated in Community 4-H Clubs, Clover Kid Groups, Special Interest Clubs (SPIN), SNAC-Kids in the Kitchen, and Afterschool 4-H Clubs at Altenburg Public School plus the School Enrichment Embryology Program.

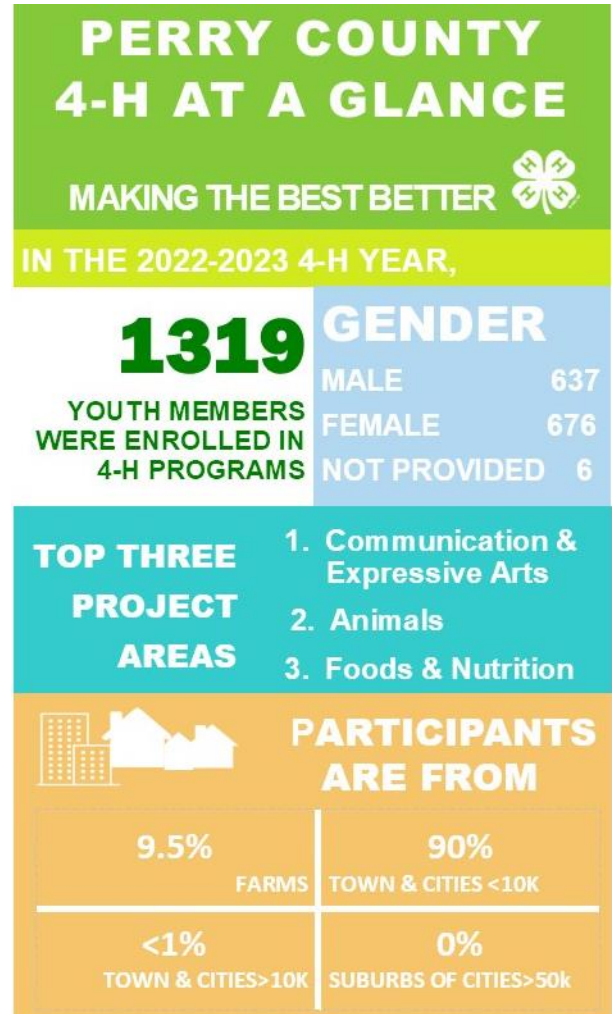
Youth engaged in learning by exploring interests and ideas in over 30 different 4-H project areas with guidance from 115 adult and youth volunteers. From STEM to livestock to personal development skills, 4-H Achievement Day and the 4-H Fair provided places for youth to participate and grow with 1,126 entries over five days of 4-H shows and contests in July. All proceeds from the 4-H Fair Chicken Dinner went back to youth as a reward for their hard work and creativity in their 4-H project work. The dinner served 883 meals while nine 4-H entrepreneurs turned their 4-H projects into profit by selling their wares during the event.

The county continued to provide strong 4-H Shooting Sports, Horse, and teen programs. 4-H members worked to improve the community through service projects throughout the year. Teen Council, a group co-sponsored by 4-H and the Chamber of Commerce, administered Building Communities Together (BCT) Youth Philanthropy Service Grant Projects totaling \$827.70 to benefit the community.

Perry County teens also demonstrated their leadership abilities by being selected to serve as two State 4-H Ambassadors, a delegate to National 4-H Congress, one as a winner of a Missouri 4-H Foundation College Scholarship, and attending State 4-H Teen Conference, State Congress, and Teen Retreat.



Seventy-three Perry County youth learned leadership, citizenship and life skills thru three camp experiences including Teen Retreat, SE Region Camp and Peaceful Valley 4-H Camp.



Perry County 4-H members fought hunger by raising over 16,000 meals for local families this year making the county eighth in the state 4-H Feeding Missouri Competition to fight food insecurity.



Educational Access & Excellence



Horticulture Programming in the Southeast Region

Donna Aufdenberg, Field Specialist in Horticulture

In 2023, there were 1,580 direct contacts (participants) through gardening programs where participants were actively engaged in the learning process. Programs were in-person and online. Participants learned about planning the vegetable garden, planting flower and shrubs, growing and using culinary herbs, native plants, growing specialty crops hydroponically, container gardening, high tunnel and greenhouse basics, seed saving, gardening pests and many more topics.

There was a continued interest in home vegetable gardening in 2023 due to concerns about food security and food costs. Many new gardeners learned about growing their own food, increasing consumption of healthy food, exercising caution in the garden during extreme heat and drought and the diligence required to plant and maintain a garden.

TO REGISTER OR ASK A QUESTION:
<https://gom.missouri.edu/townHalls/>
 Once you register, you will get a weekly reminder email from MU Extension Horticulture

FREE!!!
 Zoom Or YouTube Livestream
<https://www.youtube.com/user/MUIPM>
 Weekly On Wednesdays noon to 1 pm

The Garden Hour with MU Extension
 MU Extension Horticulture Specialists from across the state will answer your garden questions! Topics include vegetables, flowers, lawns, fruit, ornamental, houseplants, trees, and landscapes.

Online programming remains an important educational tool. This includes MU Extension Garden Hour at noon on Wednesdays during the gardening season, horticulture education meetings, home gardening webinars, farmers market webinar series and commercial vegetable programs. Participants who engaged in horticulture programming learned about insects, weeds, diseases, soil health and fertility, general plant care, and variety selection.

Horticulture

/ˈhɔːrdəkəlCHər/

Noun 1. the art or practice of garden cultivation and management

1,580+
Participants
in 60+
Programs

1,000+
One-on-One
Education
➤ Calls and
Emails
➤ Walk-ins

Top Gardening Requests

Vegetable Gardening • Growing Berries • Planting Fruit Trees • Composting • Soil Testing • Raised Bed Garden • Hydroponics • Planting Shrubs

A monthly Garden Spade Newsletter reaches over 2,300 subscribers every month with a 20% increase in readership during 2023. Subscribe to the garden spade at <https://extension.missouri.edu/courties/cape-girardeau> or click the QR code at the right.





Educational Access & Excellence

Garden Spade Newsletter

A monthly Garden Spade Newsletter reaches over 2,300 subscribers every month with a 20% increase in readership during 2023. Articles written by staff serving Perry County include:

*Donna Aufdenberg,
Field Specialist in Horticulture*

- ✓ A Rainbow of Colors – Bromeliads
- ✓ “Over Loving” Can Lead to Problems in the Garden
- ✓ Use Caution with Using Epson Salts!
- ✓ Drought Across the State
- ✓ Avoid Certain Tasks During Dry Conditions
- ✓ Drought Resources for Gardeners
- ✓ A Heavenly Scent (*Dianthus*)
- ✓ Synergy in Pesticides
- ✓ On the Bookshelf
- ✓ Cleaning and Disinfecting Planting Containers
- ✓ Interesting Plants to Try in 2024

*Bethany Bachmann,
Field Specialist in Nutrition and Health Education*

- ✓ Grapefruit
- ✓ Kale
- ✓ Asparagus
- ✓ Peas
- ✓ Rhubarb
- ✓ Blueberries
- ✓ Green Beans
- ✓ Tomatoes
- ✓ Apples
- ✓ Pumpkins
- ✓ Cranberries
- ✓ Navel Oranges

*Anthony Ohmes,
Field Specialist in Agronomy*

- ✓ Spring Cool Season Lawn Weed Management
- ✓ Be Very, Very Quiet, We are Hunting Moles!
- ✓ A Healthy Lawn is a Properly Mowed Lawn
- ✓ Weed of the Month: Wild Violets
- ✓ Fall Maintenance of Lawns
- ✓ Weed of the Month: White Clover



Southeast Show-Me-Select Replacement Heifer Program

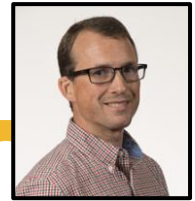
The Show-Me-Select Replacement Heifer program was created in 1998, the program focuses on educating beef cattle farmers about best management practices related to heifer development. Local veterinarians and MU Extension livestock specialists work with producers to create a reliable source of replacement heifers in terms of genetics and management.

- Two sales were held in St. Francois County in 2023 reaching 135 producers from 17 counties in Missouri and two adjoining states.
- Gross revenue for the Farmington Show-Me-Select sales were \$583,000 in 2023.





Educational Access & Excellence



Soil Nutrient Management and Pest Management

Anthony Ohmes, Field Specialist in Agronomy

Field Specialist in Agronomy, Anthony Ohmes, provided direct and indirect one-on-one education to producers, consultants and other ag related clients. One-on-one education is one of the most impactful ways to reach producers. One-on-one, clients are engaged and make changes to improve their forage or row crop production be it through soil test results and consultation, crop diagnostics or pest identification and control. MU Extension continues to meet the educational needs of Missouri producers, consultants and all who support Missouri agriculture by providing research-based information and expertise to individuals when and where they need it. In return, participants remain engaged in learning and making changes based on information provided.

A total of 231 agronomic soil tests were reviewed and 160 producers and homeowners were contacted through one-on-one education in Perry County.



Perry County field visit.

Private Pesticide Applicator Training

Anthony Ohmes, Field Specialist in Agronomy

Under the Missouri Pesticide Use Act, University of Missouri Extension provides education to private pesticide applicators in the core competency areas of pest management, environmental stewardship and personal protection. Specifics include the importance of scouting for pests and evaluating implemented plans, understanding the label, and protecting exposure routes from poisoning with personal protective equipment. A private applicator is defined as any individual who is certified by the director as authorized to use, or to supervise the use of, any pesticide which is classified for restricted use for purposes of producing any agricultural commodity on property owned or rented or on the property of another person, if used without compensation other than trading of personal services between producers of agricultural commodities, on the property of another person.

Four in-person training events were held in Perry County. Thirty-one applicators received certification/recertification. Additionally, multiple online trainings through Zoom were offered. Survey of participants indicated an increase in knowledge of IPM, understanding the label and pesticide

safety. On a scale of 1 to 7, the knowledge prior to training averaged 4.4 and after training increased to 6.1. When asked if they would use or change practices due to training the average was 6.7 yes. Overall review of presentation and presenter was 6.9. As far as changes indicated specifically, participants included personal protective equipment, safety, and better record keeping.

Private applicator training and the information provided is vital for the wellbeing of our producers and our environment.

For information on University of Missouri Pesticide Applicator training contact MU Extension or refer to our website:

<https://extension.missouri.edu/programs/pesticide-applicator-training>



Educational Access & Excellence

2023 MU Extension Crop Conference

Anthony Ohmes, Field Specialist in Agronomy

The 2023 Regional Crop Conference was held at the Miner Convention Center during January. Participants from 11 MO counties, including Perry County, and two other states were presented research-based information in market outlook, commodity organization updates, soybean and corn disease management, weed management and nutrient management.

Over 100 attendees rated the overall value from the information provided at 8.0 average out of a maximum of 10. When asked what changes would be made as a result of the information provided the responses included: 1) Marketing crops; 2) Herbicide and weed control options; 3) Plant soybeans earlier; 4) Crop rotations.

Overall, the research-based education increased overall knowledge in the topic areas which will lead to informed decisions that can help implement changes in management practices. Therefore, improving the economic viability of farm operations.



MU Crop Conference Meeting

University of Missouri Grazing Schools

Anthony Ohmes, Field Specialist in Agronomy

University of Missouri Extension offered two grazing schools in the SE region of Missouri. A total of 37 participants from across Southeast Missouri, including Perry County, learned various aspects of managed intensive grazing (MIG) over three days.

Missouri's 7.1 million acres of permanent pasture provide feed for the state's 1.9 million cows (2018 data). Pasture yield and quality, in turn, drive the productivity of Missouri's beef industry. Over the past 30 years, public agencies in Missouri have devoted extensive effort toward educating and incentivizing producers to adopt improved grazing management practices. These efforts raise the economic output of Missouri's beef industry by more than \$125 million every year.

Participants overall indicated an increase in knowledge and plan to incorporate one or more aspects of managed intensive grazing (MIG). Eighty-five percent (85%) of participants indicated their knowledge of MIG increased and 91% of participants plan to adopt or currently practice rotational grazing management.



John Turner teaching at the Spring Grazing School

Turfgrass Education

Turfgrass management is a comprehensive approach starting with specie selection, site development, soil sampling and nutrients, planting, watering, and pest management. Anthony Ohmes provided turfgrass education at two events in Perry County. In the spring he spoke at the Perry County Master Gardeners' Garden Seminar and provide a workshop in the fall. Forty-two total participants were educated in turfgrass management.

Surveys from the fall workshop indicated an overall increase in knowledge and participants planned to use the information provided. Anthony Ohmes received a rating 4.5 out of 5.0 for teaching and education provided.



Economic Opportunity



Agriculture Business and Policy Southeast Missouri Region

David Reinbott, Field Specialist in Agricultural Business

The Agriculture Business program is focused on providing information on agricultural profitability to farmers, crop consultants, landowners, agricultural bankers, grain merchandisers, and those in the agricultural business field.

The passage of the 2018 Farm Bill brought on additional ongoing educational opportunities. Using a combination of social media, email, and direct contacts, over 1,500 farmers and landowners learned about the ARC and PLC election choices for 2023.

University of Missouri Extension ag economics department and ag business specialists worked together to coordinate one summer and three fall tax schools. The schools were designed for those who prepare taxes including enrolled agents, tax preparers, CPAs, individuals, and attorneys. The training included updates on legislation, rulings and cases, individual taxpayer issues, agricultural and natural resources topics, ethics, trusts and estates, agriculture and natural resource tax issues,

business tax issues, business entity tax issues, IRS issues, penalties and defenses, form 4797 sales of property, retirement tax issues, like-kind exchange issues. The 2023 school attendance totaled 327 people statewide.

Educational programming included a weekly crop market update that went out to over 1,600 individuals through email and was posted on the Southeast Missouri Farm Business Facebook page. The 2023 crop budgets for Southeast Missouri were posted on the Southeast Missouri agriculture business web site and were made available to the county extension offices. Farmers, crop consultants, landowners, agricultural bankers, and lawyers in the Southeast Missouri region used the crop budgets for cash flow planning, economic analysis, farm rental analysis, and marketing plans. In addition, one-on-one counseling with farmers and landowners was provided on crop marketing, record keeping, farm leases, rental agreements, and farm government program analysis.

Agricultural Lenders Seminars

Agricultural Lenders Seminars were held in December. Twenty-seven lenders across Southeast Missouri were in attendance. The topics included: Commodity Outlook, Agriculture Policy, Farm Bill Update, and crop budgets.

Speakers were Pat Westhoff, Agricultural Economist and Program Director of International Affairs for the Food and Policy Research Institute (FAPRI) at the University of Missouri-Columbia. David Reinbott, Southeast Region Agriculture Business Specialist, updated the lenders on the SEMO Crop budgets and seasonal marketing trends. Kevin Hunt, FSA loan manager, updated the lenders on FSA borrowers' resources. Marla Young, loan officer with the Missouri Agriculture and Small Business Development Authority with the Missouri Department of Agriculture, updated the lenders of their programs.

Managing the financial side of the farm business continues to be a major challenge for farmers. The Ag Lenders seminars provided lenders with valuable information on price outlook, possible Ag policy changes, and financial and management strategies that will help them in their lending decisions.

From the seminar evaluation, the participants rated the seminar useful and valuable. The lenders commented that the price forecasts, crop and policy outlooks, projected budgets, and macro-economic outlook was the most helpful.





Perry County

UM System Footprint in the county in 2023



FY23 county students

73 students

- 57 Undergraduates
- 16 Graduate and professional students
- 60 Full-time students
- 13 Part-time students
- 17 Pell grant recipients (aid year 2023)



County employees and retirees

9 people employed by UM

- 8 Campuses
 - 1 MU Health Care
- 1 UM retiree or beneficiary
 UM salary and retirement income: \$350,394
 UM state tax revenue: \$10,777
 UM federal tax revenue: \$44,101



County alumni

Selected school alumni

- 11 Medicine
- 14 Nursing
- 28 Health Professions
- 8 Dentistry
- 2 Optometry
- 5 Veterinary Medicine
- 56 Agriculture
- 88 Engineering
- 11 Law

Alumni teaching K-12

- 15 teachers
- 8.5% of all district teachers
- 2 principals and administrators
- 16.7% of all district principals and administrators



County breakdown

MU

- 43 students
- 219 alumni
- 6 employees

UMKC

- 4 students
- 24 alumni
- 2 employees

Missouri S&T

- 18 students
- 78 alumni
- 0 employees

UMSL

- 8 students
- 66 alumni
- 0 employees



County properties and offices

MU Extension in: Perry County



County population: 19,007



County services provided

Health care (FY23)

- 28 in-state patients seen at MU Health Care, with \$3,394 of uncompensated care
- 3 in-state patients seen at UMSL Center for Eye Care with a statewide average of \$34.82 per patient in uncompensated care
- MU Health Care's Missouri Telehealth Network recorded 4 visits to 3 patients having ZIP codes associated with the county

Extension (2022)

- 9,729 Total educational contacts from MU Extension to residents of the county, including:
- 184 contacts related to productive farming, better gardening, and managing natural resources
- 9,519 contacts related to healthy eating and aging, strengthening families, personal finance, or youth development
- 26 contacts related to starting businesses, developing community leaders, or renewing the local economy

Perry County



UM System Statewide Footprint

Economic and Community Development Highlights

- In 2022, Business Development Specialists worked with small businesses and entrepreneurs statewide to create or retain 81,645 jobs.



\$3.1
billion

For every dollar invested from 2019 to 2021, the MU Extension Business Development Program has returned \$133 in economic impact for its clients by increasing sales more than \$1.6 billion. For a total impact of \$3.1 billion, the program has generated more than 37,000 jobs and attracted nearly \$451 million in capital investments and \$1.5 billion in government contracts.

- Between FY17 and FY22, UM System brought Missouri more than \$1.46 billion in federal and private research funds, funded primarily from outside the state, but spent within the state.



In FY23, UM System was issued 33 patents and filed 61 new U.S. patent applications.

- In FY23, the UM System awarded 805 design and construction project contracts throughout Missouri, for a total investment of \$279.2 million in the state.



In FY23, to improve access to medical and health related services, MU Health Care's Missouri Telehealth Network's Show-Me ECHO program provided 18,381 hrs of case-based instruction to 2,938 learners located in 112 of 114 Missouri counties and the city of St. Louis.

Education and Training Provided



41,992 police, fire fighters, and medical professionals attending continuing education (2022)



Agriculture and natural resource programs served 174,692 farmers and related businesses (2022)



311,749 youth and stakeholder educational contacts in 4-H clubs, schools, camps and other programs (2022)

Education Highlights

FY23 Financial Aid Awards

In FY23, 67.3% of the UM System's 80,702 students received financial aid totaling \$973.7 million

MU

27,256

students receiving financial aid

\$536.0M

financial aid awarded

UMKC

11,859

students receiving financial aid

\$217.3M

financial aid awarded

Missouri S&T

6,748

students receiving financial aid

\$117.7M

financial aid awarded

UMSL

8,489

students receiving financial aid

\$102.8M

financial aid awarded

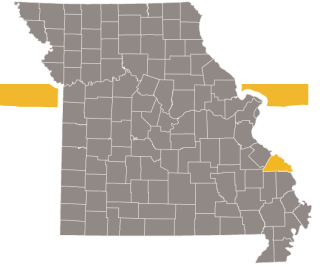


UM System's MOREnet (Missouri Research and Education Network) provides internet connectivity, access, support and training to 58 higher education institutions (230,000 students), 485 K-12 school districts (832,000 students) and 132 public libraries (serving nearly 3 million Missourians) in 2022.

- UM System awarded 50.5% of the 32,098 Bachelor's or higher degrees awarded by Missouri four-year public institutions in 2022-23.
- UM System awarded 36.6% of the 1,935 research doctorates and 26.9% of the 3,593 professional doctorates awarded by Missouri public and not-for-profit private institutions in 2022-23.
- In FY23, UM System's \$37.9 million in National Science Foundation (NSF) grants represented 88.3% of all NSF grants made to Missouri public colleges and universities.
- In 2023, over 10,900 Missourians accessed mobroadband.org, part of the UM System Broadband Initiative which helped the statewide build-out of high-speed internet infrastructure. MU Extension also supported residents in making individual challenges to the FCC that resulted in \$810,000 in additional funding for the state of Missouri.

Supporting the University of Missouri is an investment in the future of Missouri.

Community Partners



Perry County Extension Council would like to thank our community partners who help support our programming efforts.

- ✓ City of Perryville
- ✓ FCS Financial
- ✓ Options for Women
- ✓ Perry County Commissioners
- ✓ Perry County Head Start
- ✓ Perry County Health Department
- ✓ Perry County School District #32
- ✓ Perry County Senior Tax Board
- ✓ Perry County Youth Tax Board
- ✓ Perryville Area Chamber of Commerce
- ✓ Perryville Methodist Church
- ✓ Perryville Senior Center



Extension
University of Missouri