



Tripe (Beef)



Tongue (Pork)



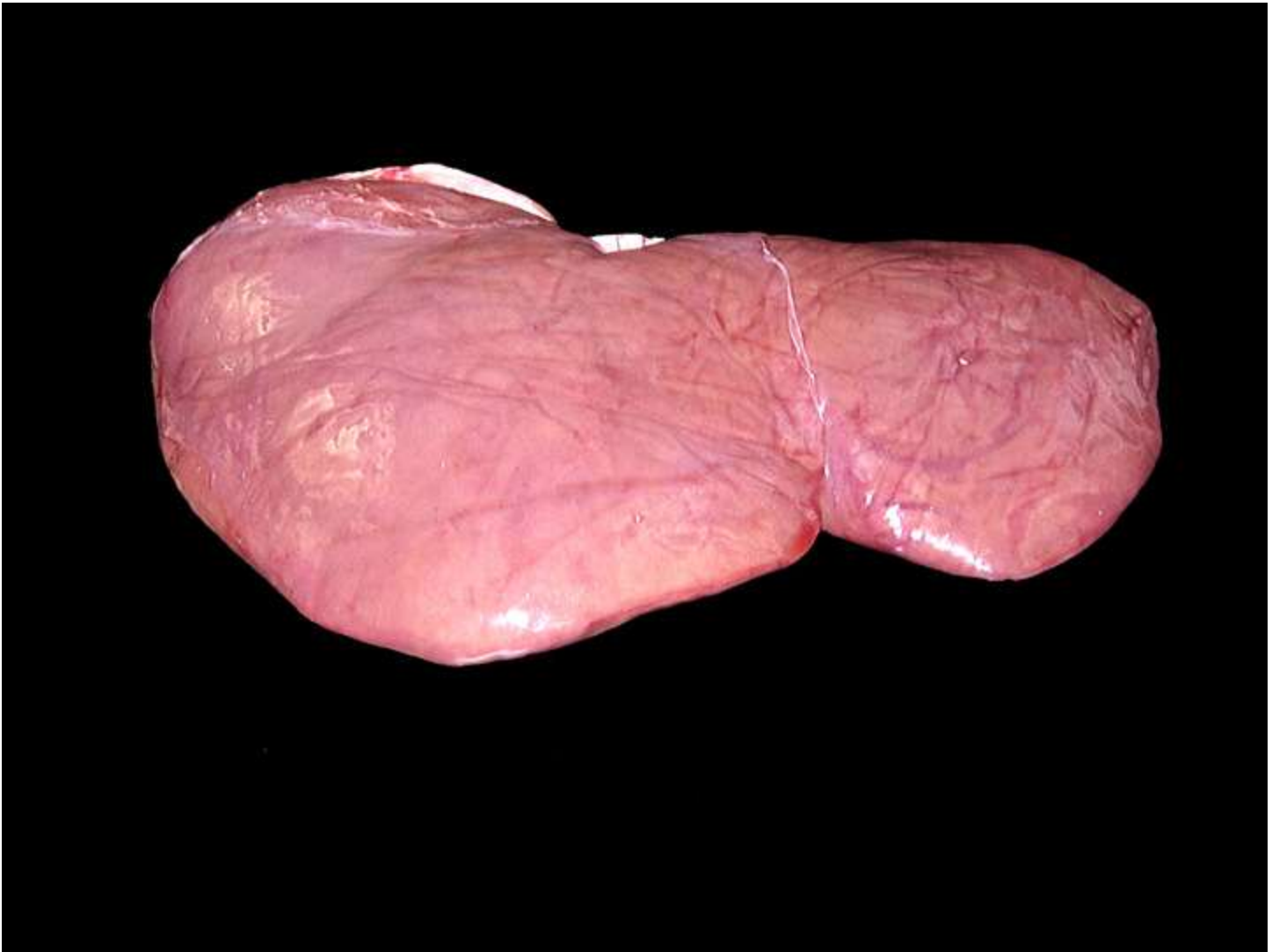
Tongue (Lamb)



Tongue (Beef)



Oxtail (Beef)



Liver (Lamb)



Liver (Beef)



Liver (Pork)



Kidney (Lamb)



Kidney (Beef)



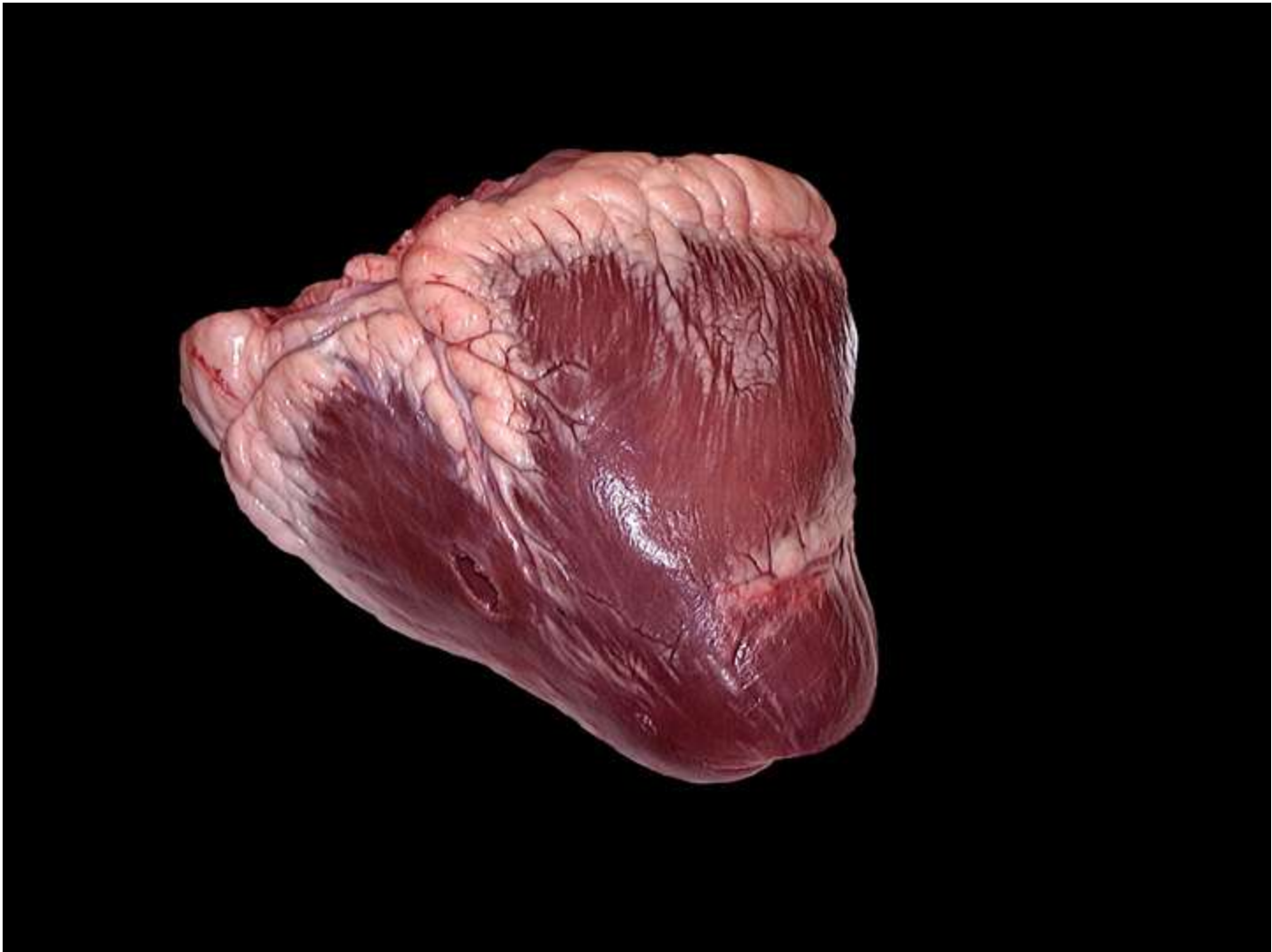
Kidney (Beef)



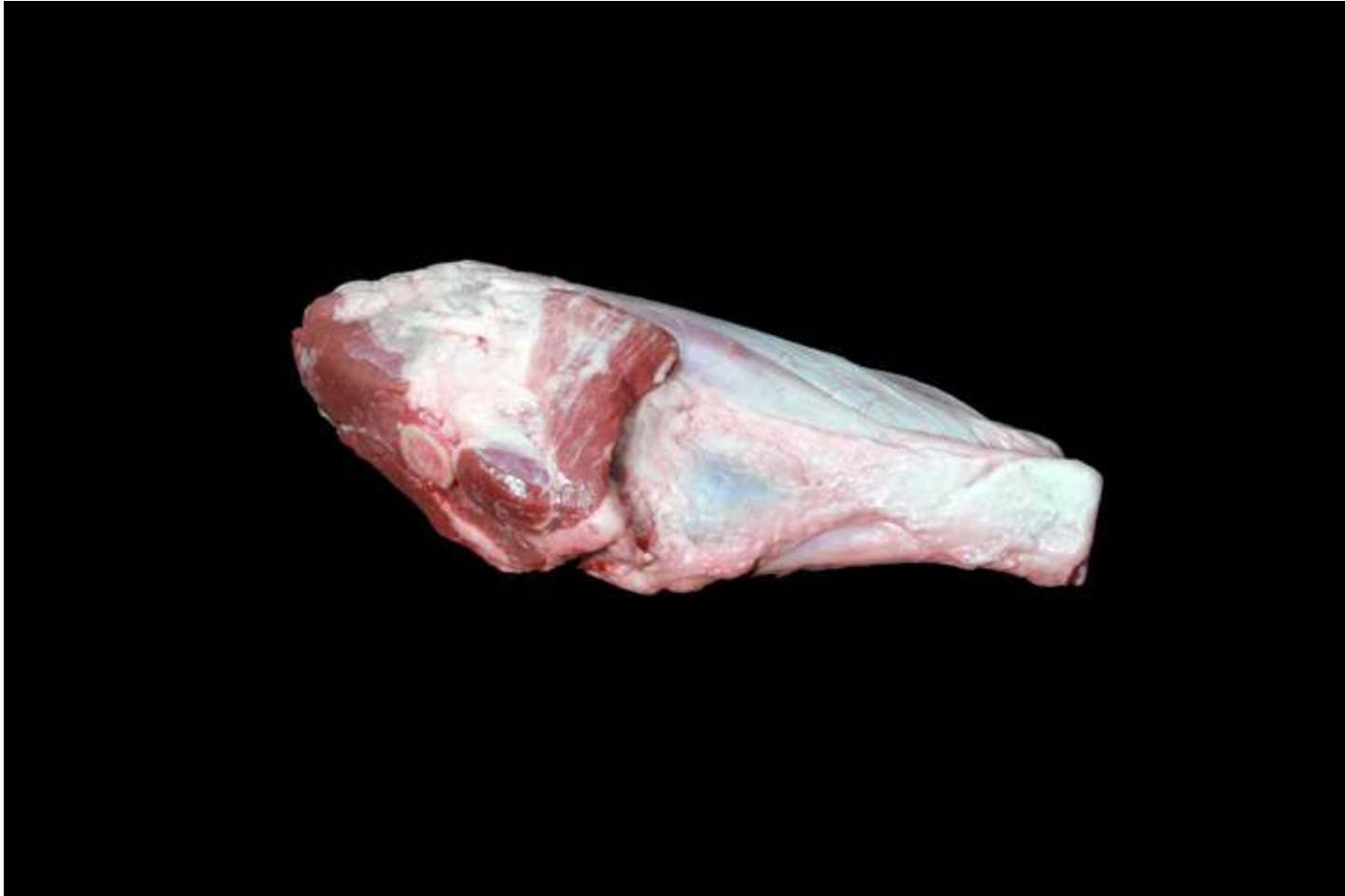
Heart (Pork)



Heart (Lamb)



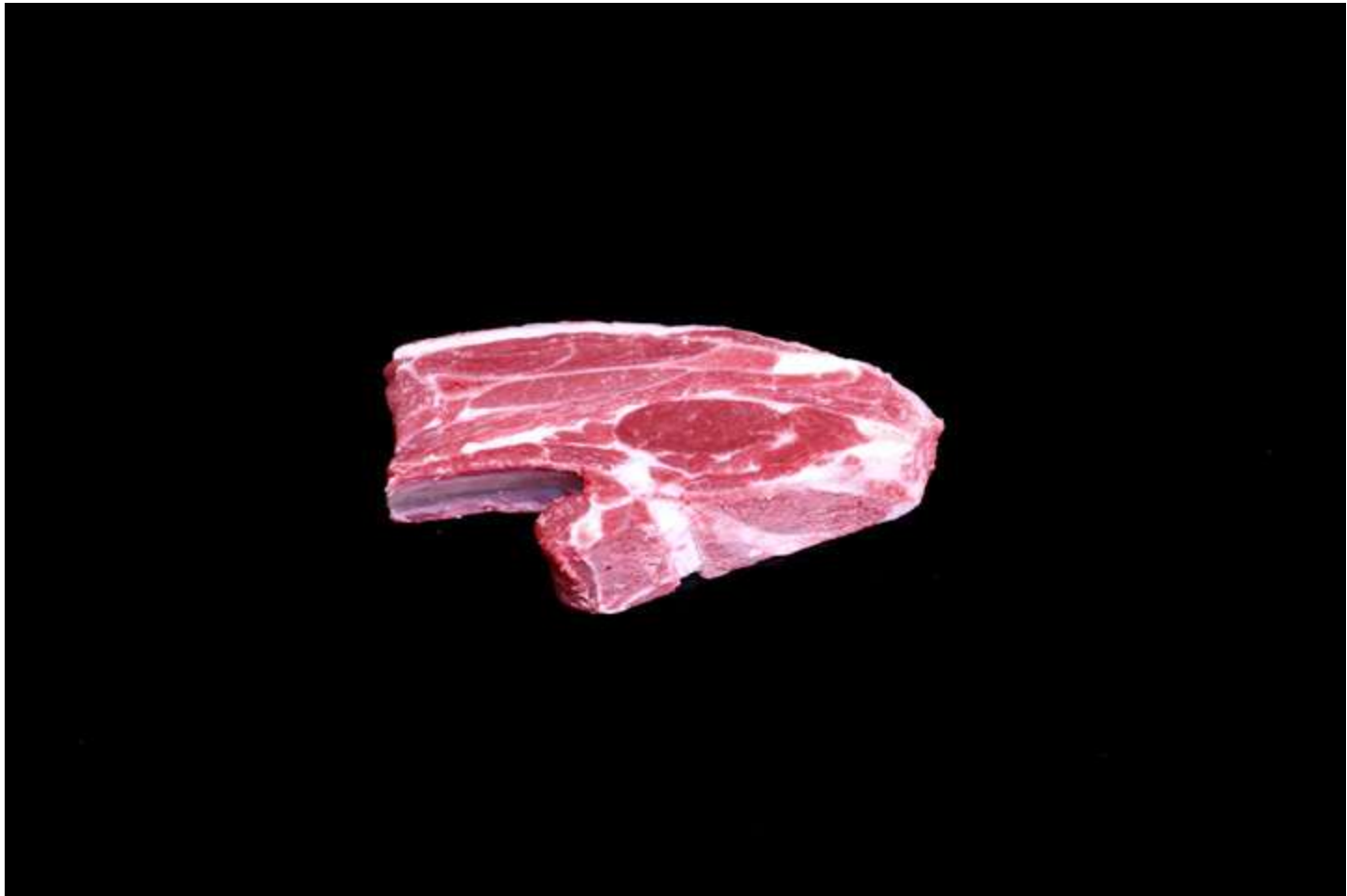
Heart (Beef)



Shank (Lamb)



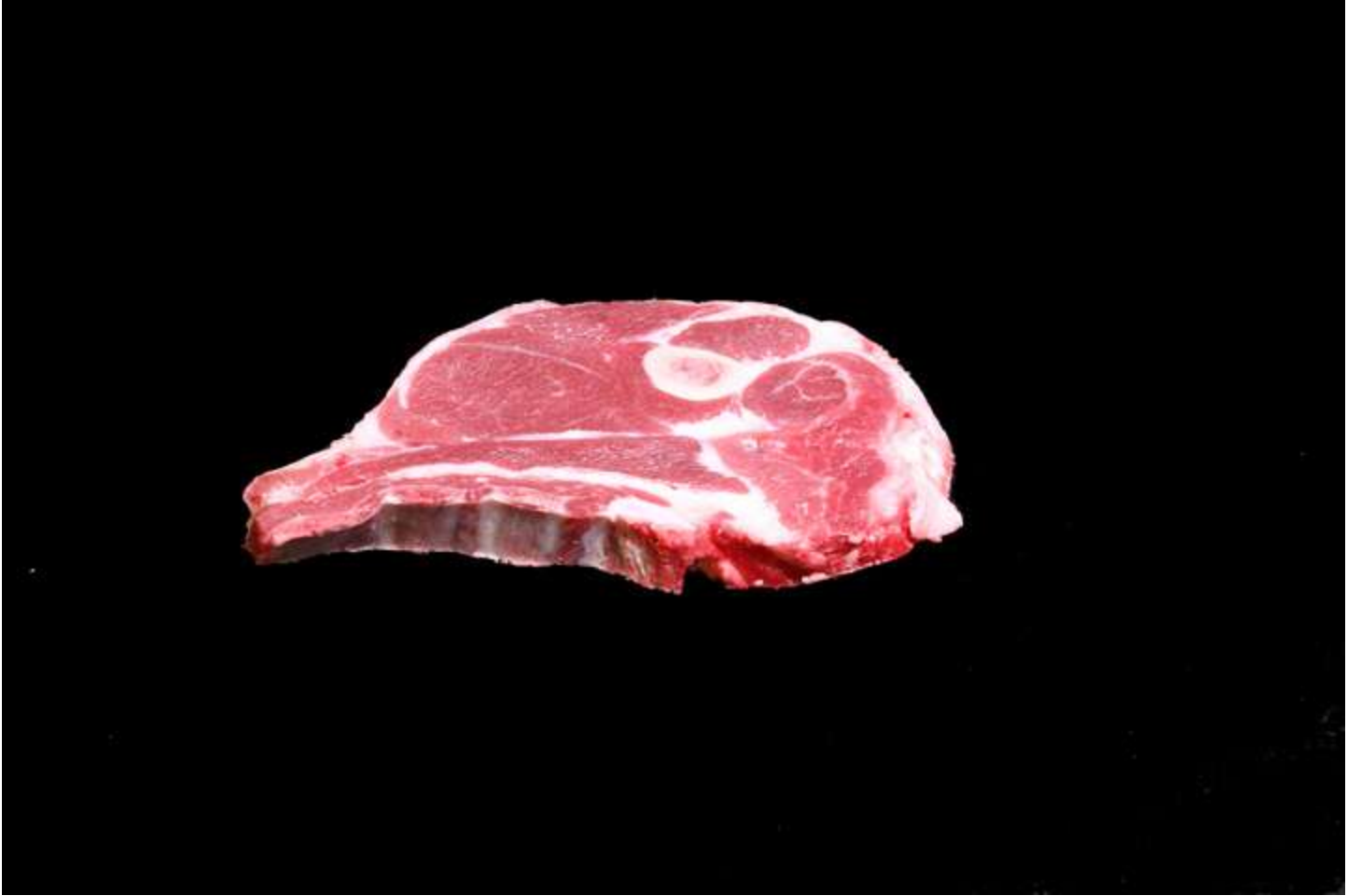
Square Cut (Lamb)



Blade Chop (Lamb)



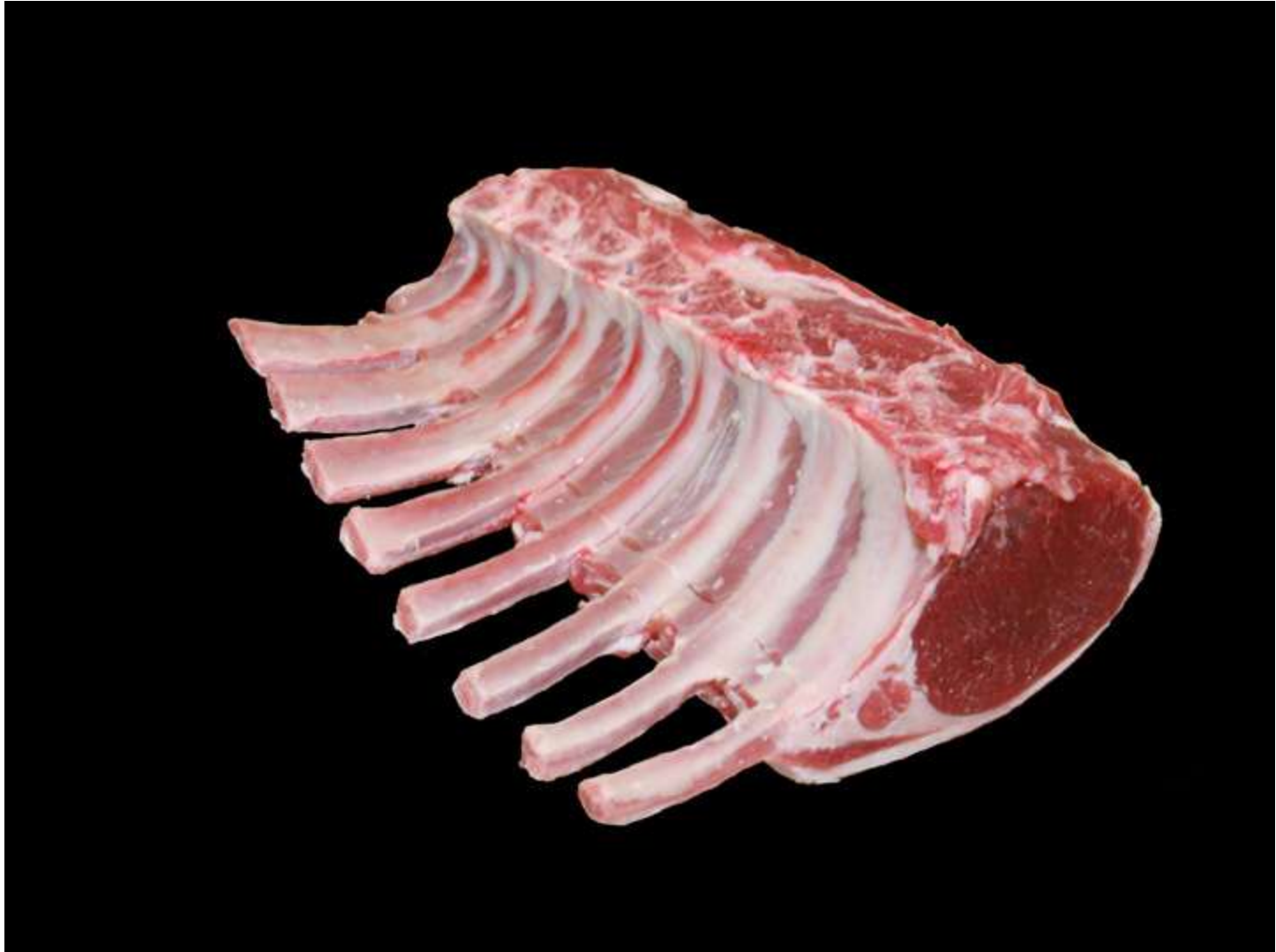
Blade Chop (Lamb)



Arm Chop (Lamb)



Arm Chop (Lamb)



Rib Roast Frenched (Lamb)



Rib Roast Loin End (Lamb)



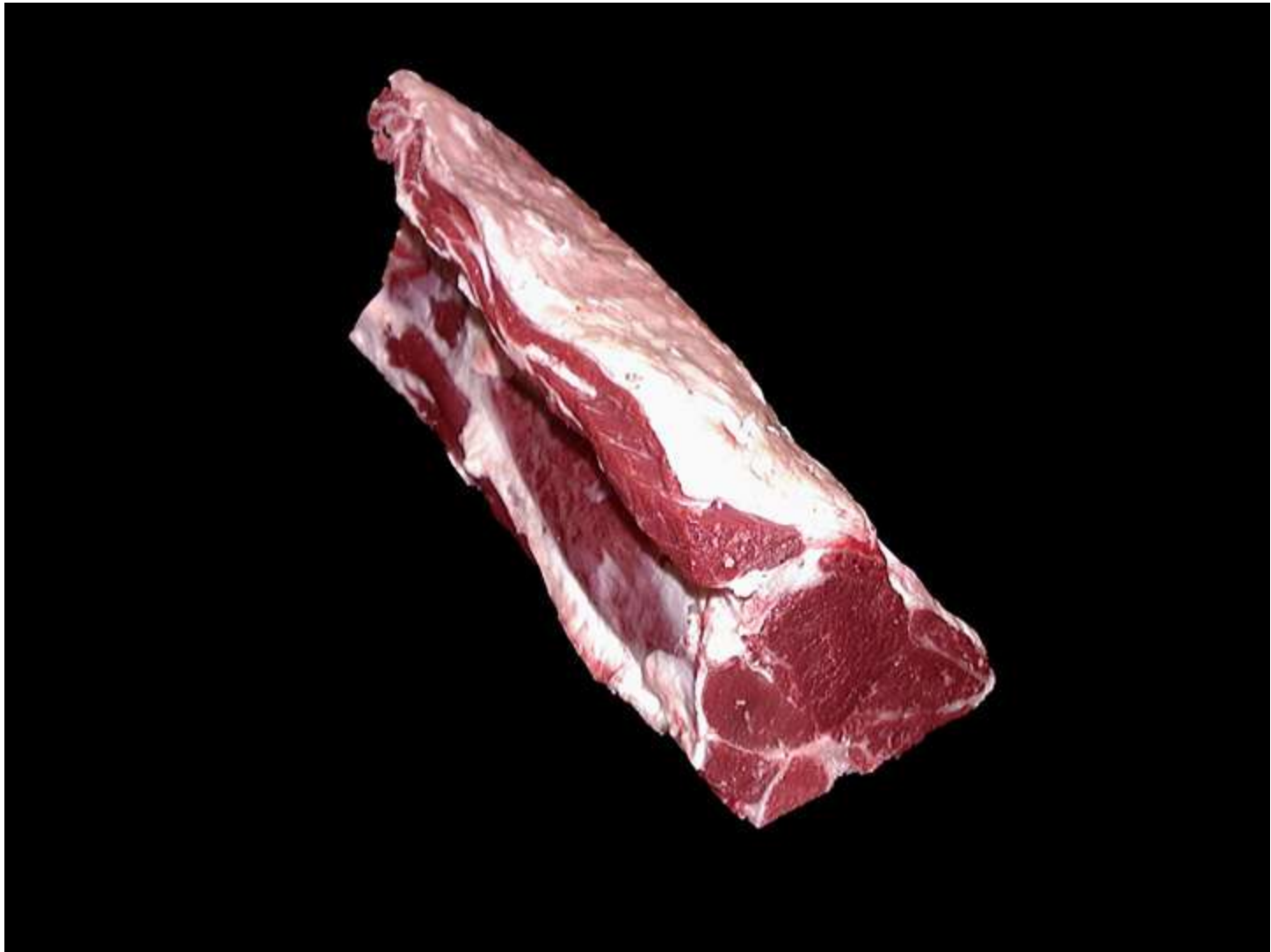
Rib Roast Breast End (Lamb)



Rib Chop Frenched (Lamb)



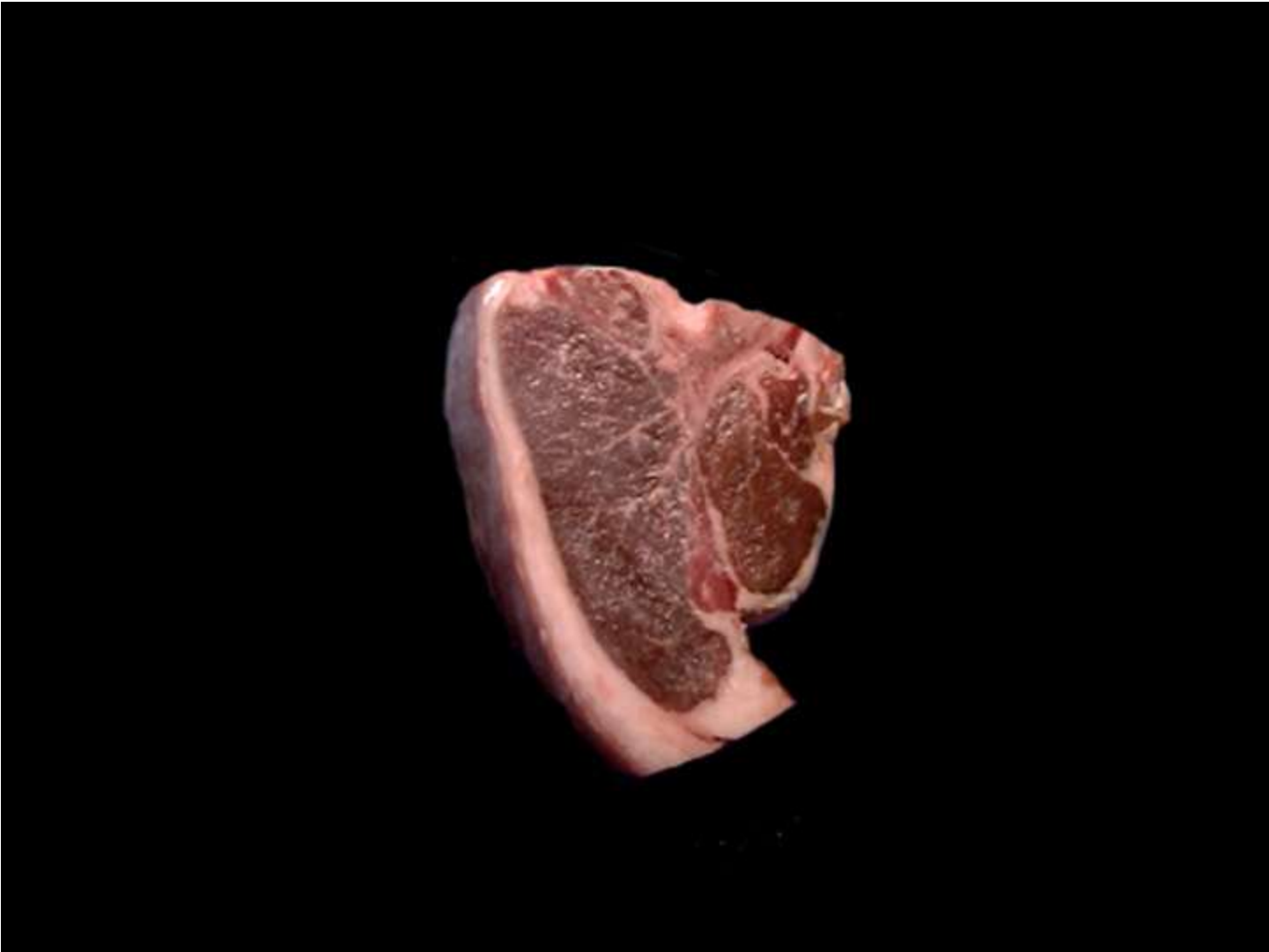
Rib Chop (Lamb)



Loin Roast Leg End (Lamb)



Loin Roast Rib End (Lamb)



Loin Chop (Lamb)



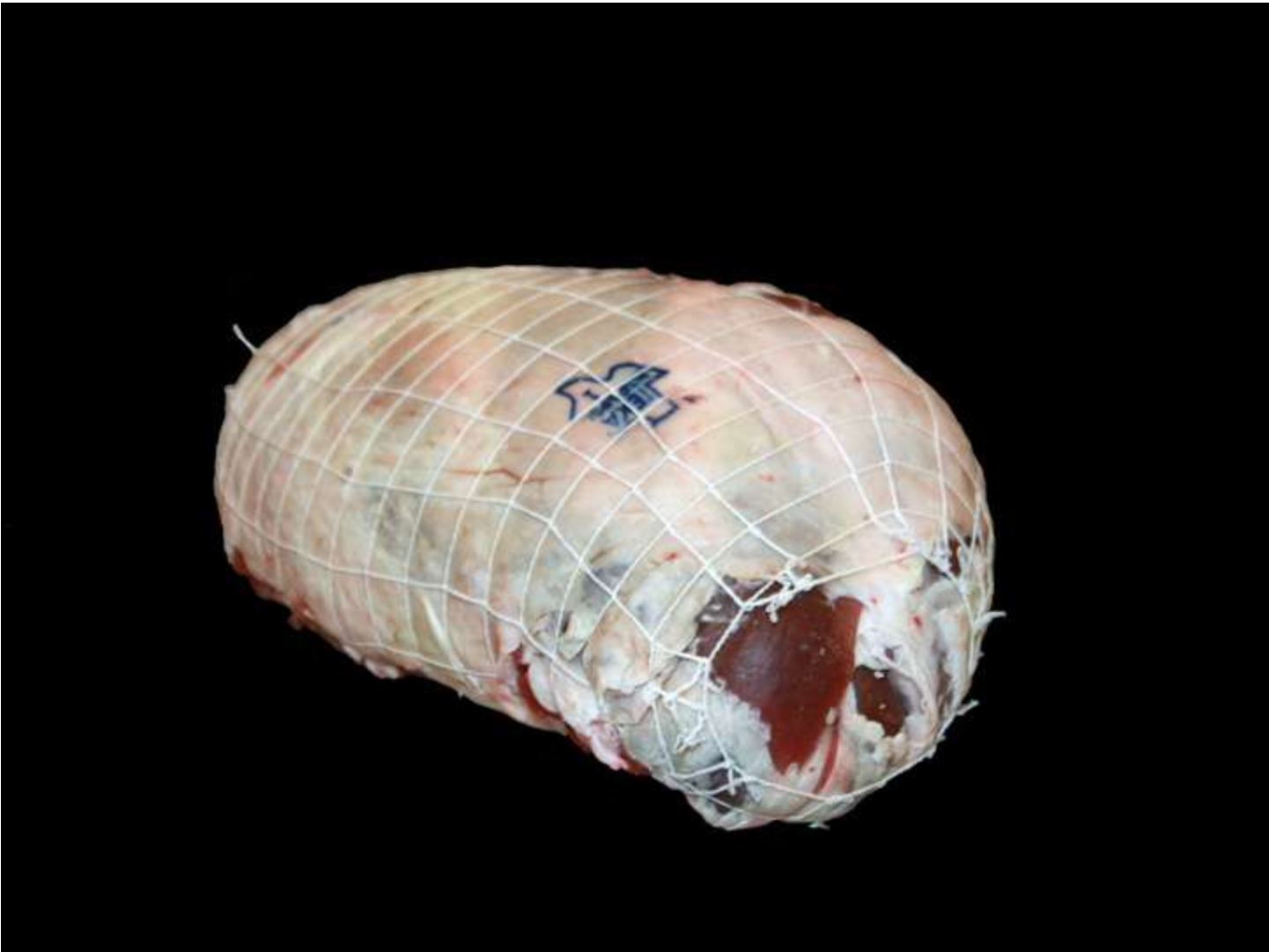
Sirloin Half (Lamb)



Sirloin Chop (Lamb)



Sirloin Chop (Lamb)



Leg Roast Boneless (Lamb)



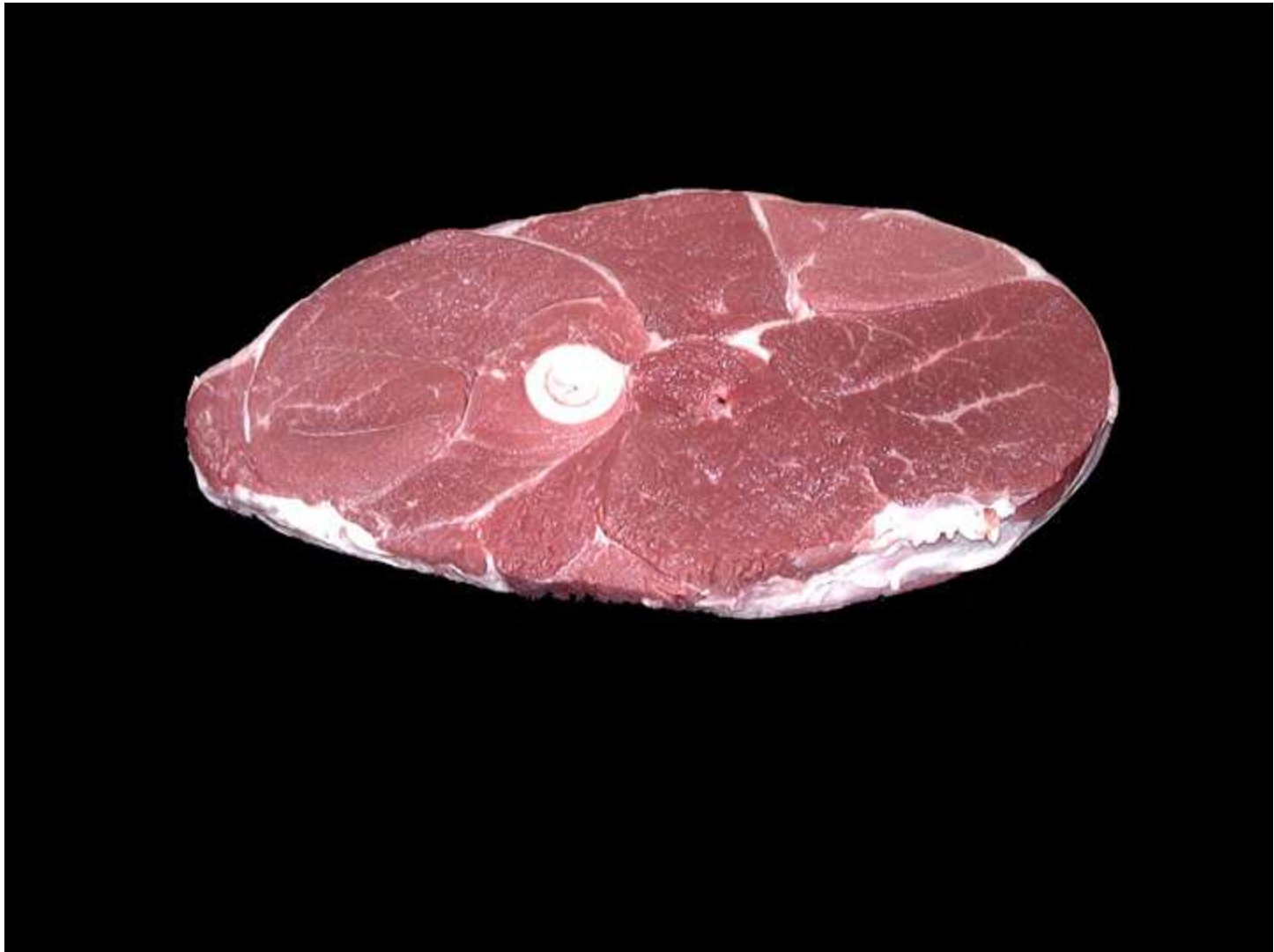
Leg Roast Boneless (Lamb)



French Style Leg (Lamb)



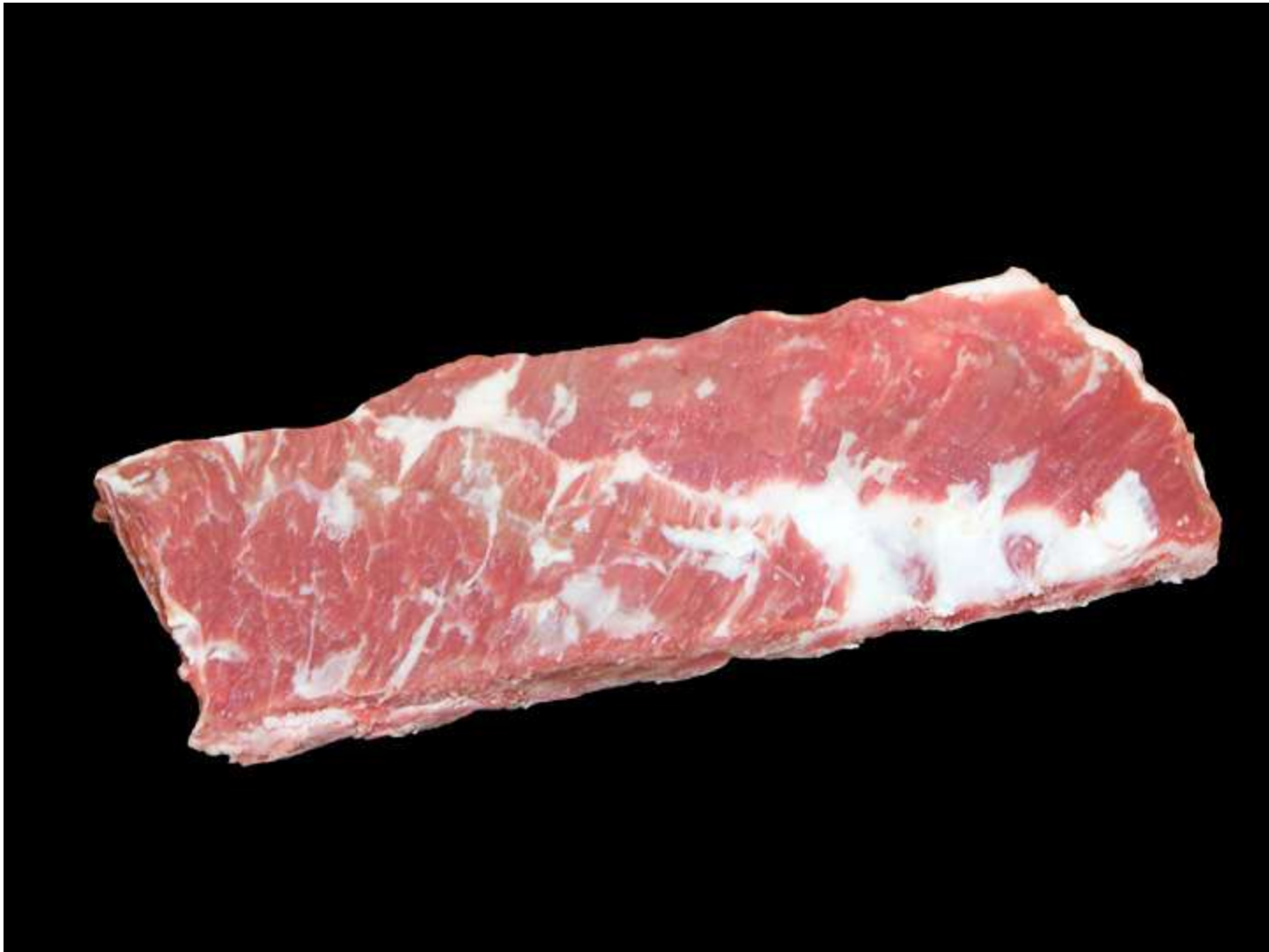
French Style Leg (Lamb)



Leg Center Slice (Lamb)



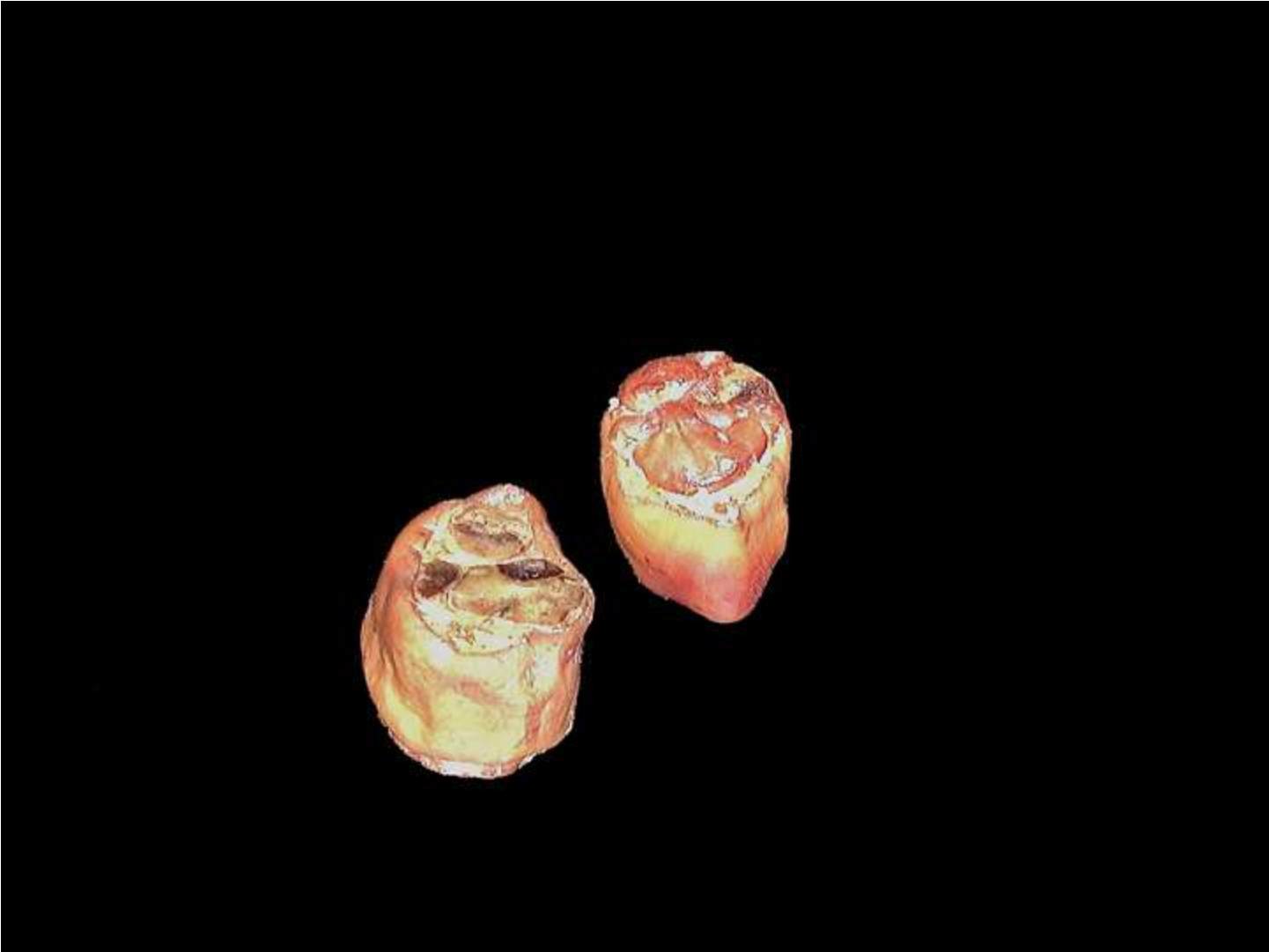
American Style Leg (Lamb)



Ribs Denver Style (Lamb) Outside View



Ribs Denver Style (Lamb) Inside View



Smoked Hocks (Pork)



Sausage (Pork)



Sausage Links (Pork)



Cubed Steak (Pork)



Hocks (Pork)



Ground Fresh (Pork)



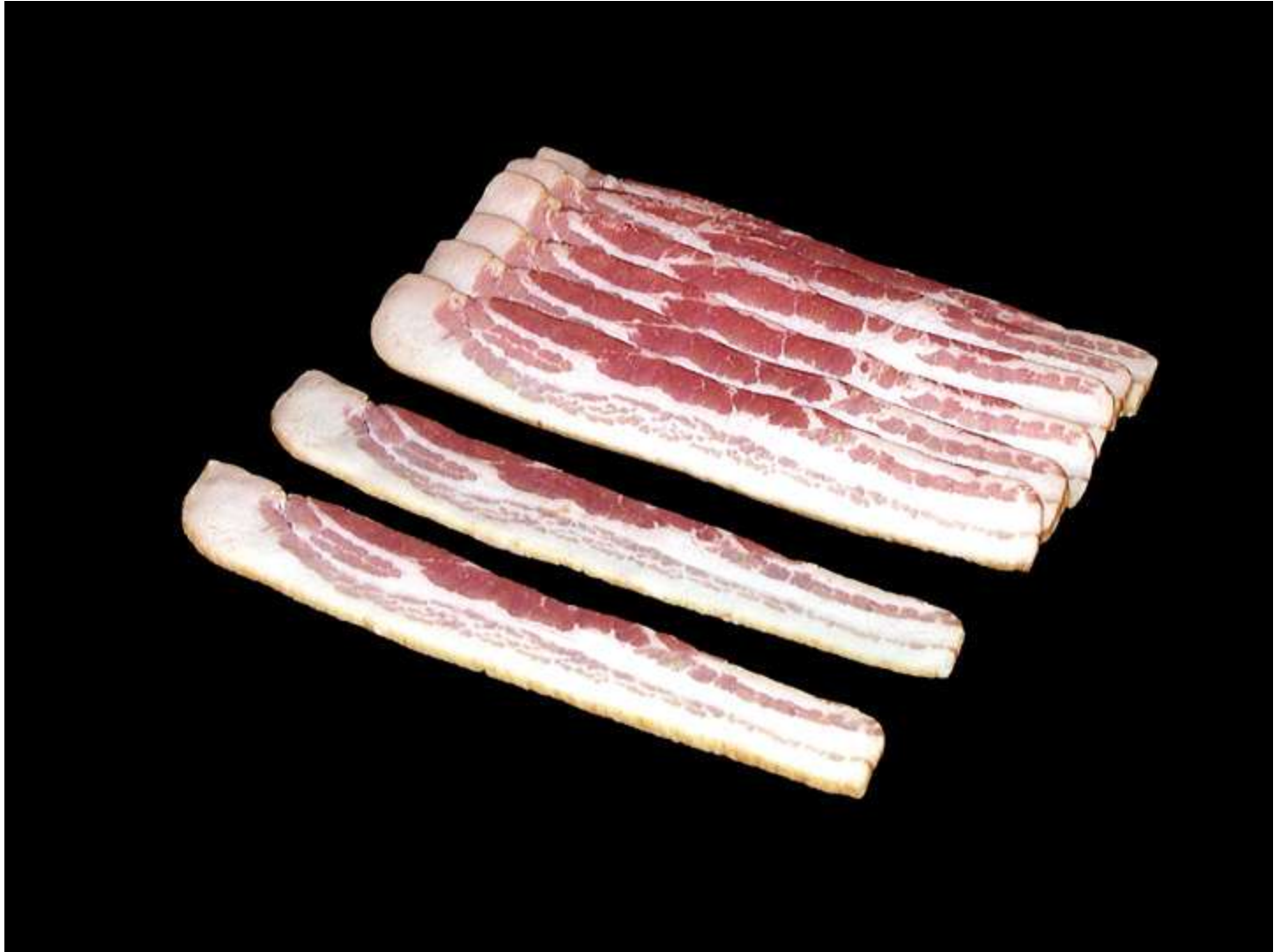
Spare Ribs (Pork)



Fresh Side (Pork)



Fresh Side (Pork)



Sliced Bacon (Pork)



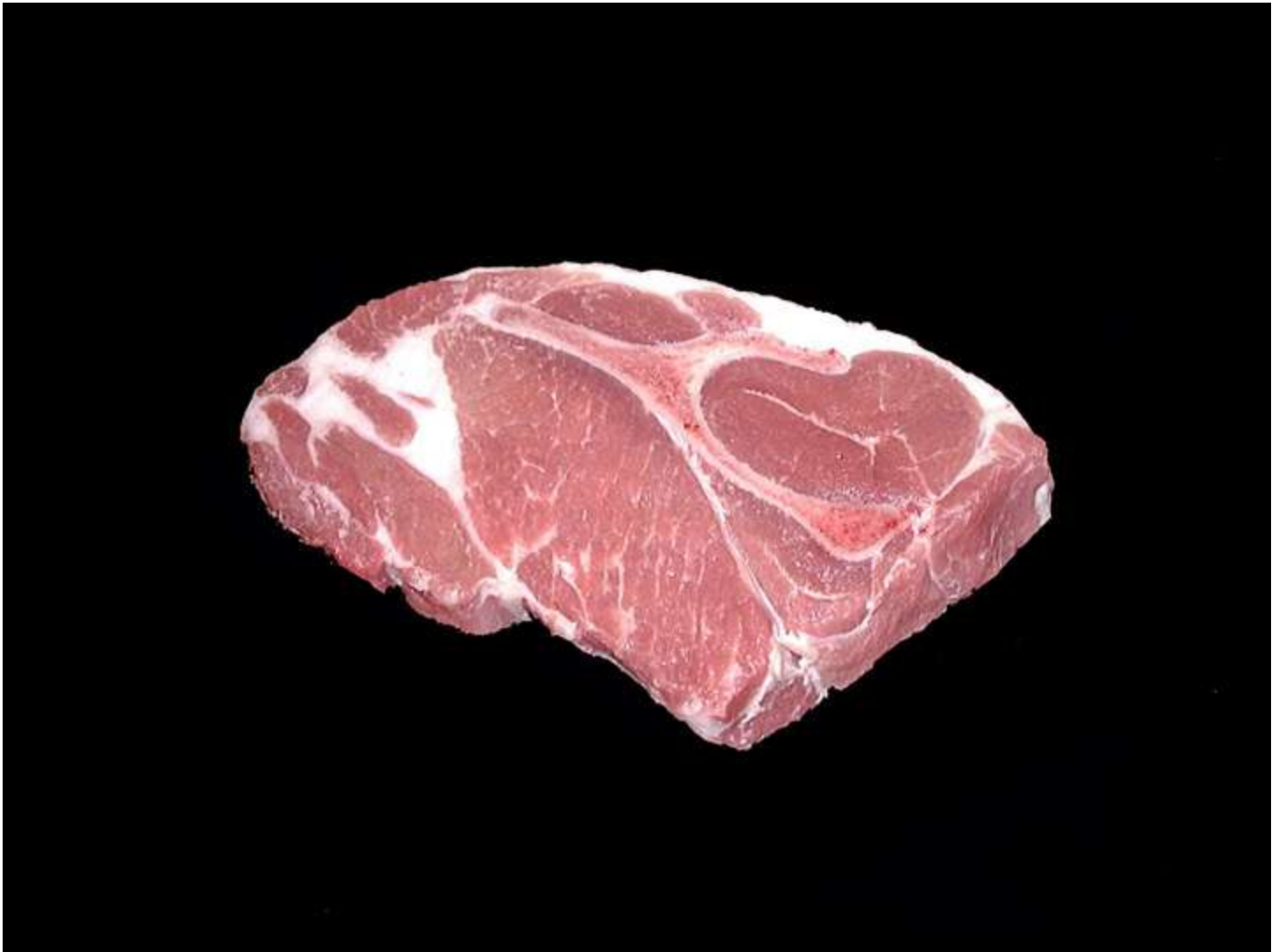
Slab Bacon (Pork)



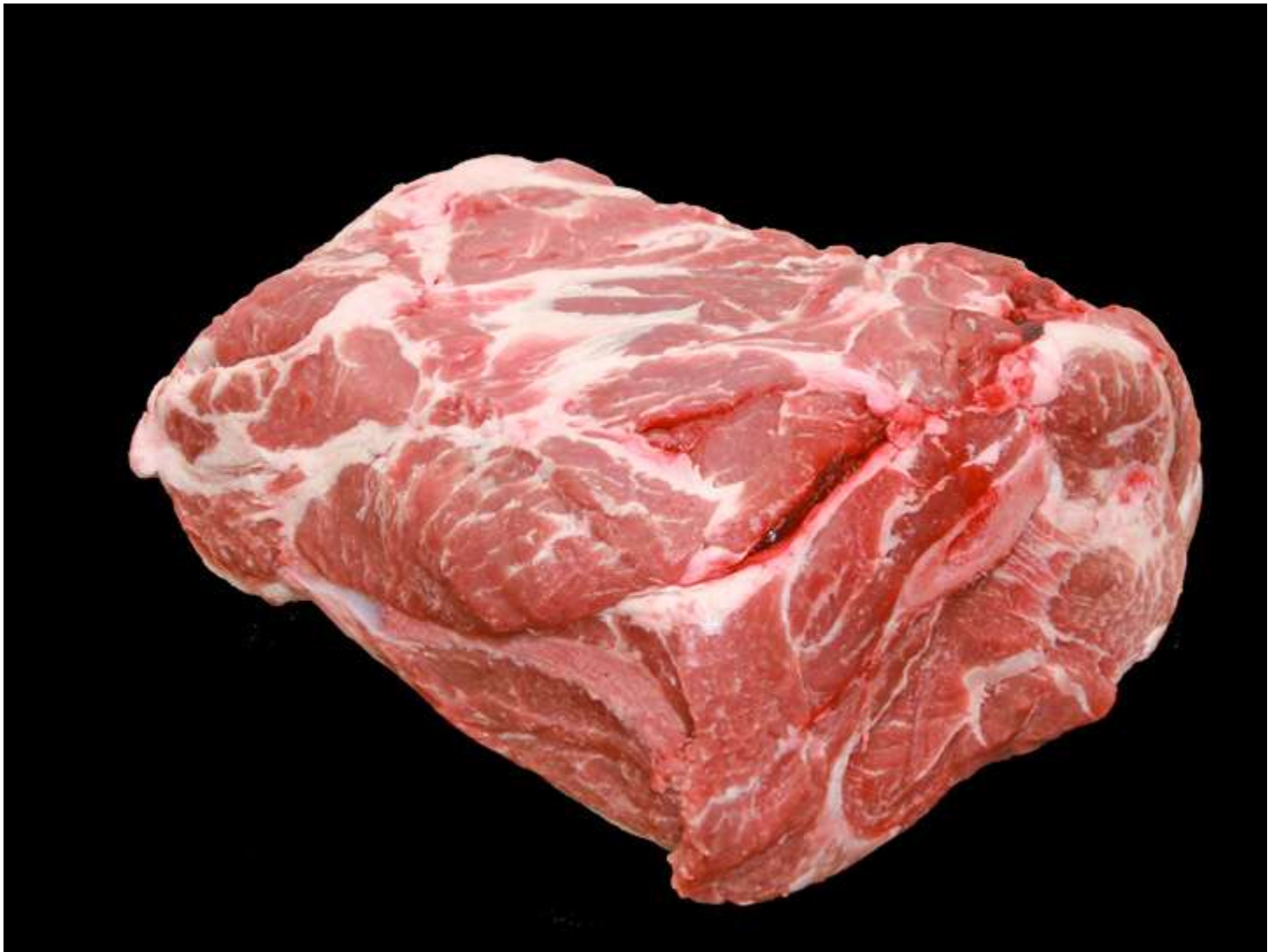
Smoked Arm Picnic Whole (Pork)



Blade Steak (Pork)



Blade Steak (Pork)



Blade Boston Roast (Pork)



Blade Boston Roast (Pork)



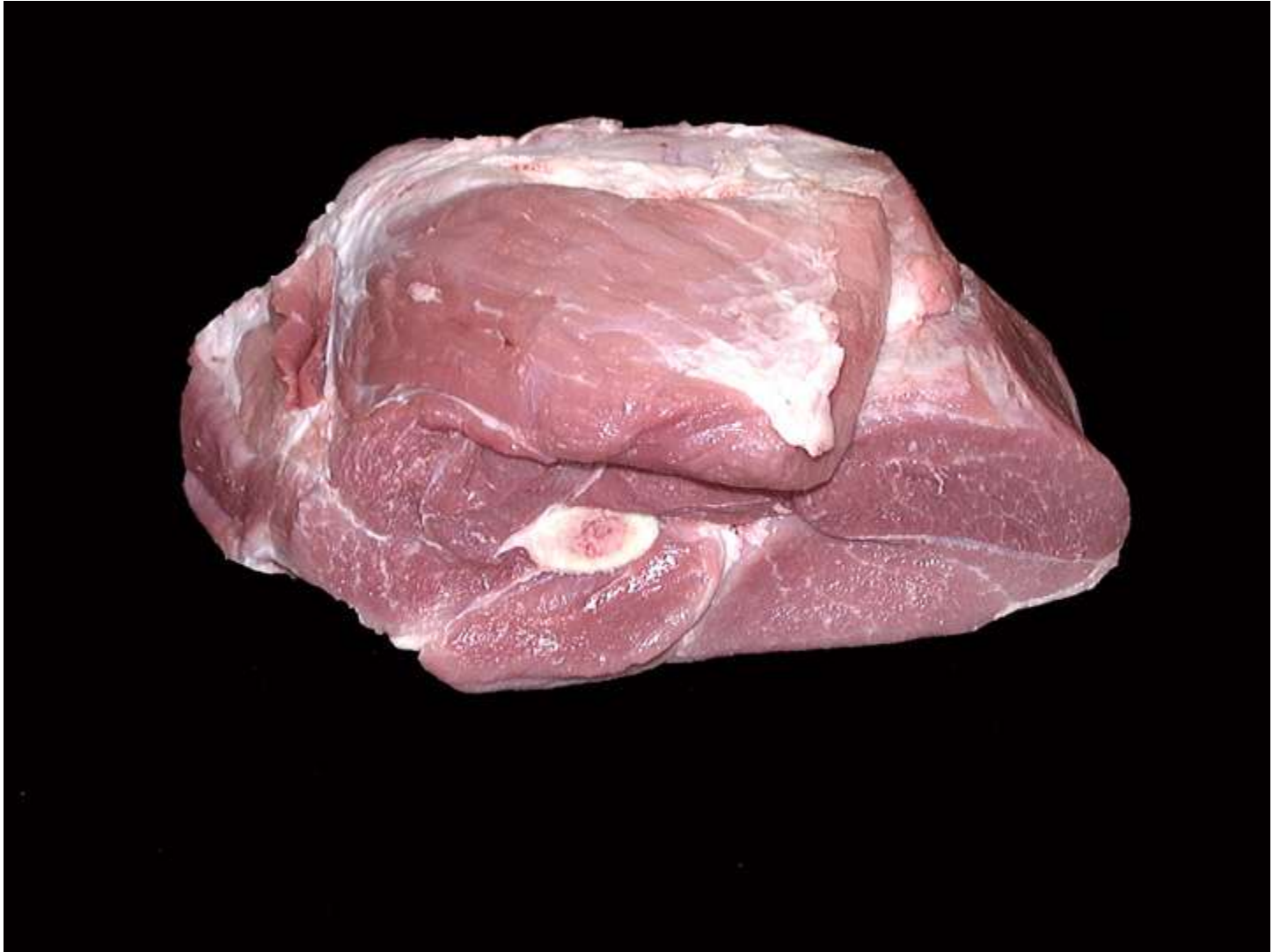
Arm Steak (Pork)



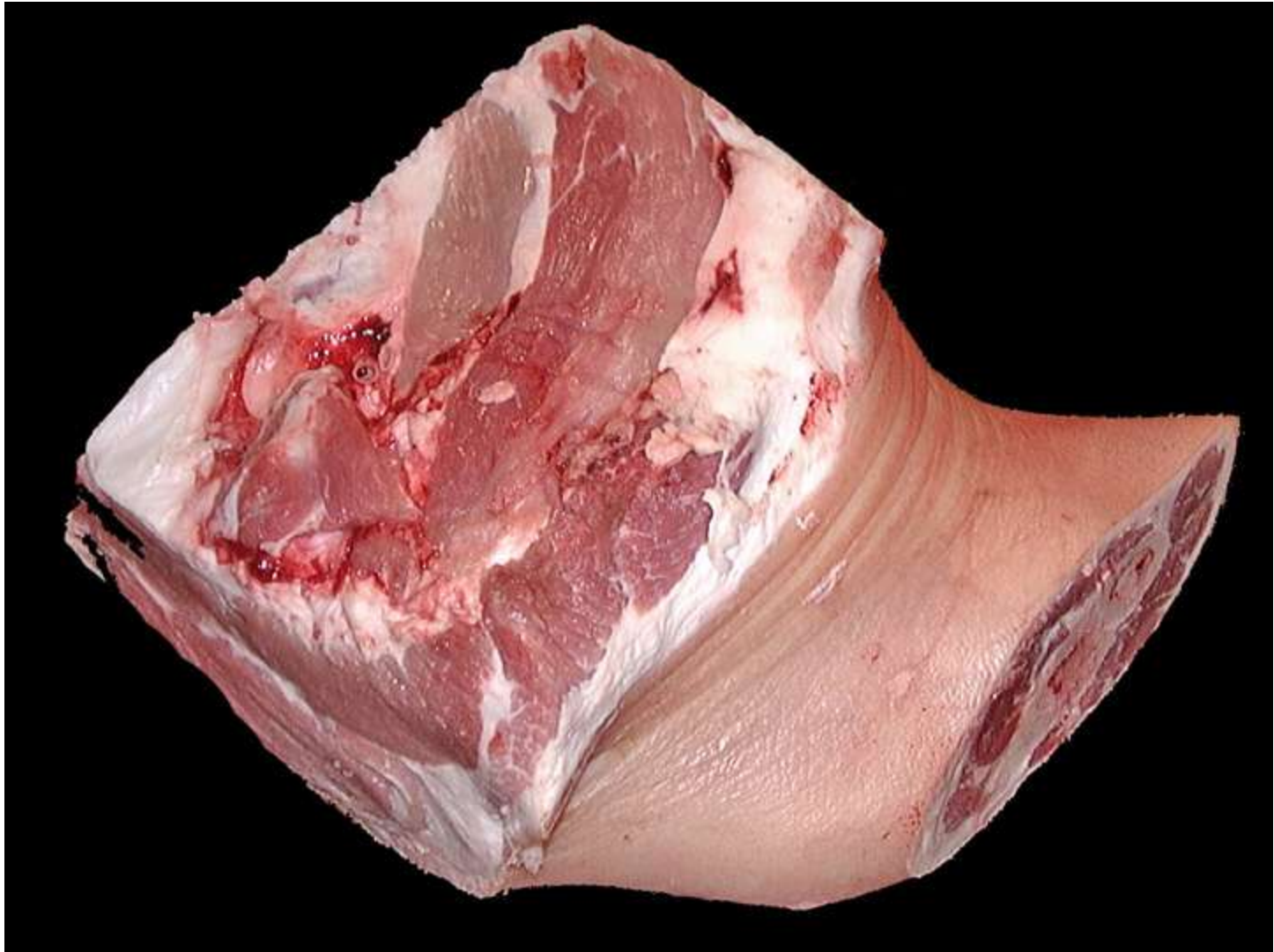
Arm Steak (Pork)



Arm Roast (Pork)



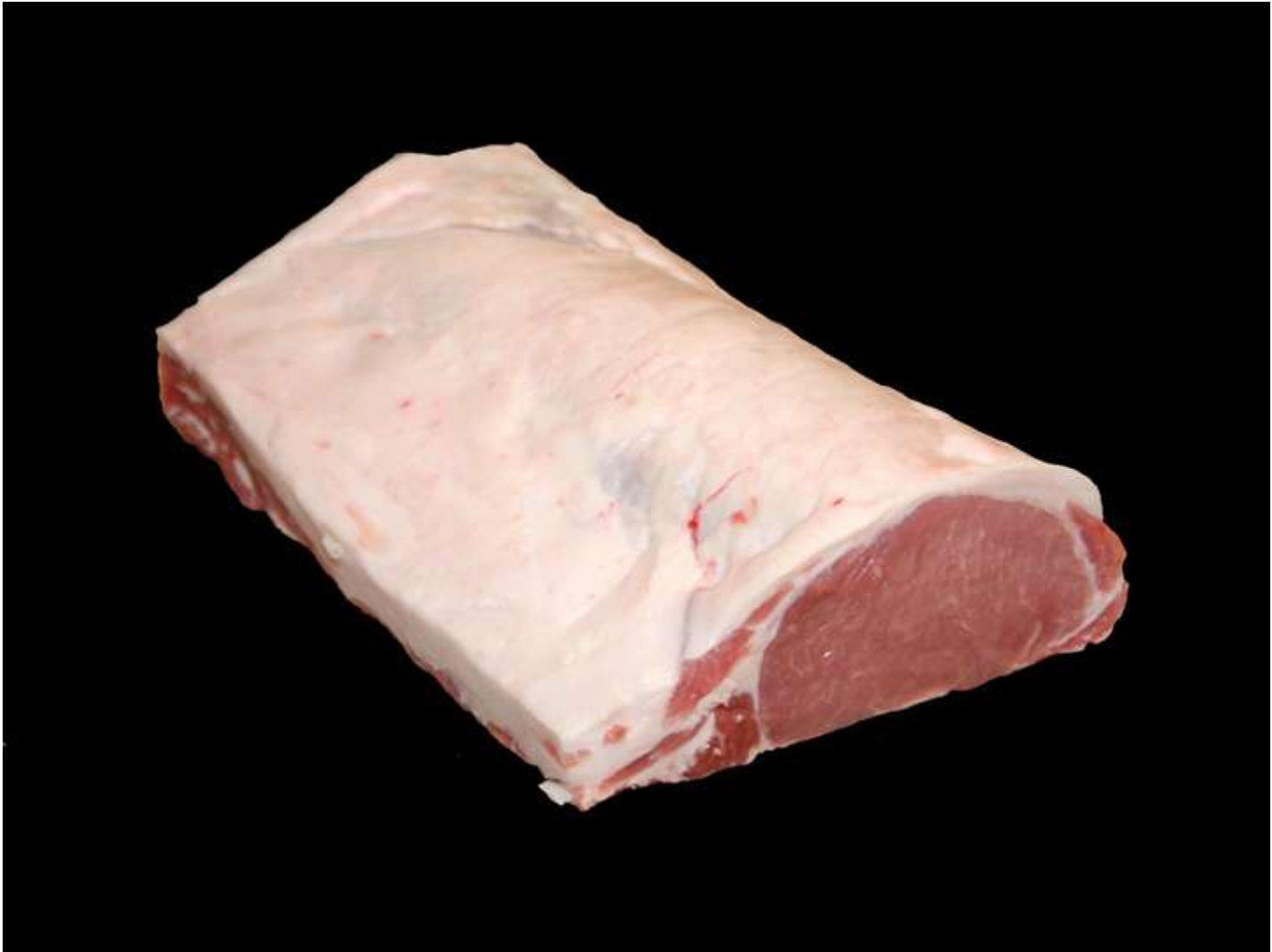
Arm Roast (Pork)



Arm Picnic Whole (Pork)



Arm Picnic Whole (Pork)



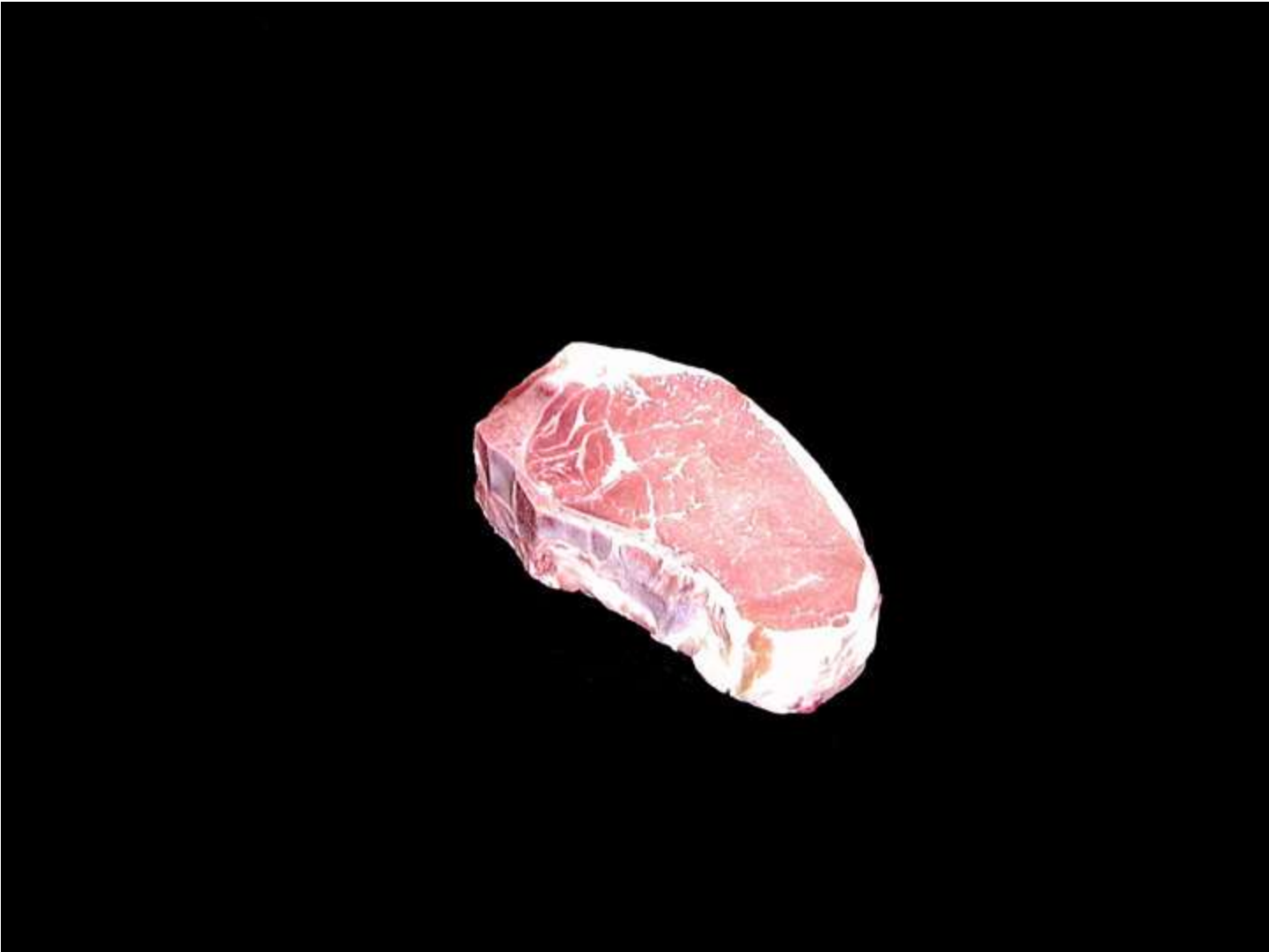
Top Loin Roast Boneless (Pork)



Top Loin Chop Boneless (Pork)



Top Loin Chop (Pork)



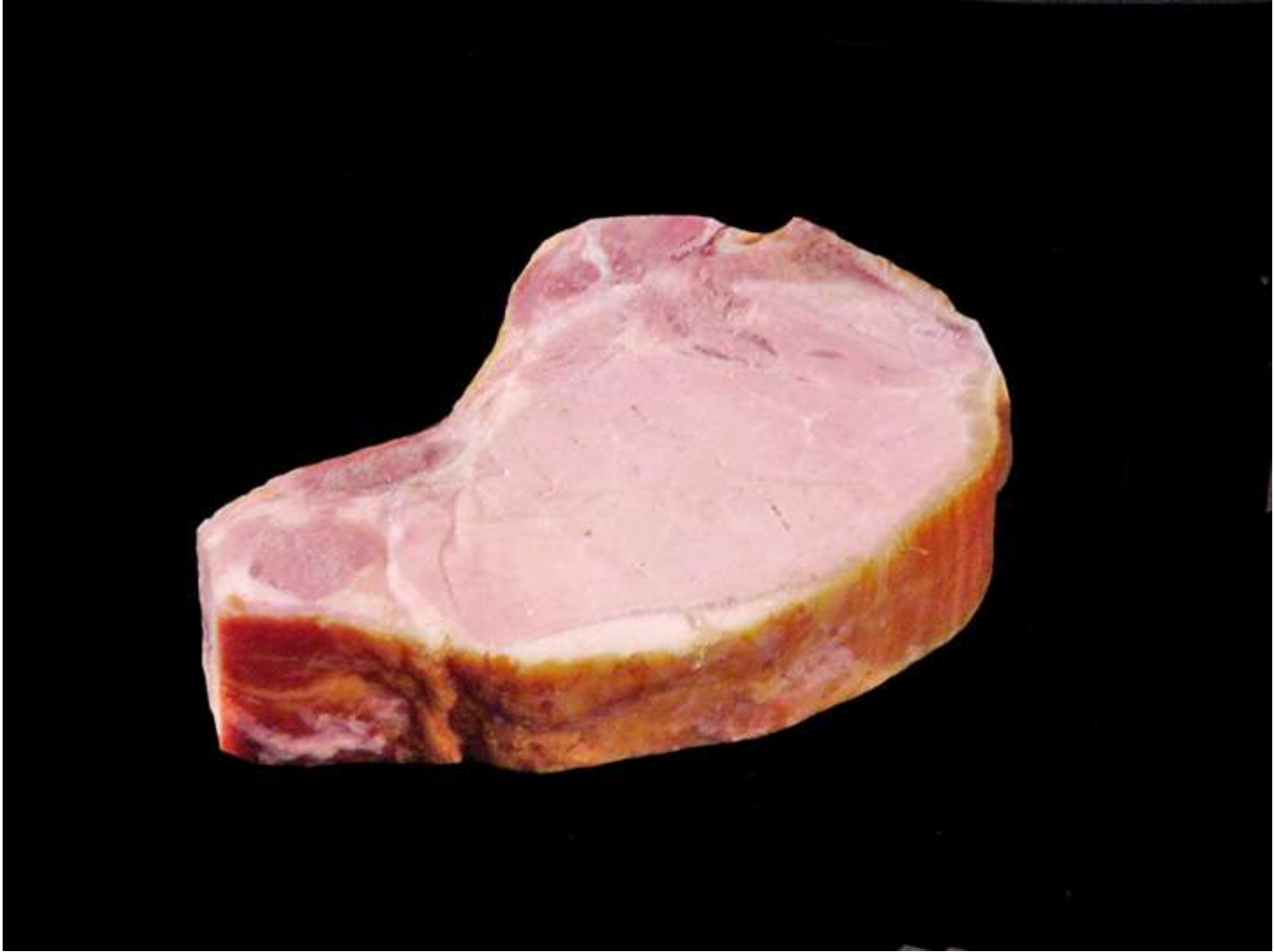
Top Loin Chop (Pork)



Tenderloin Roast Whole (Pork)



Smoked Rib Chop (Pork)



Smoked Rib Chop (Pork)



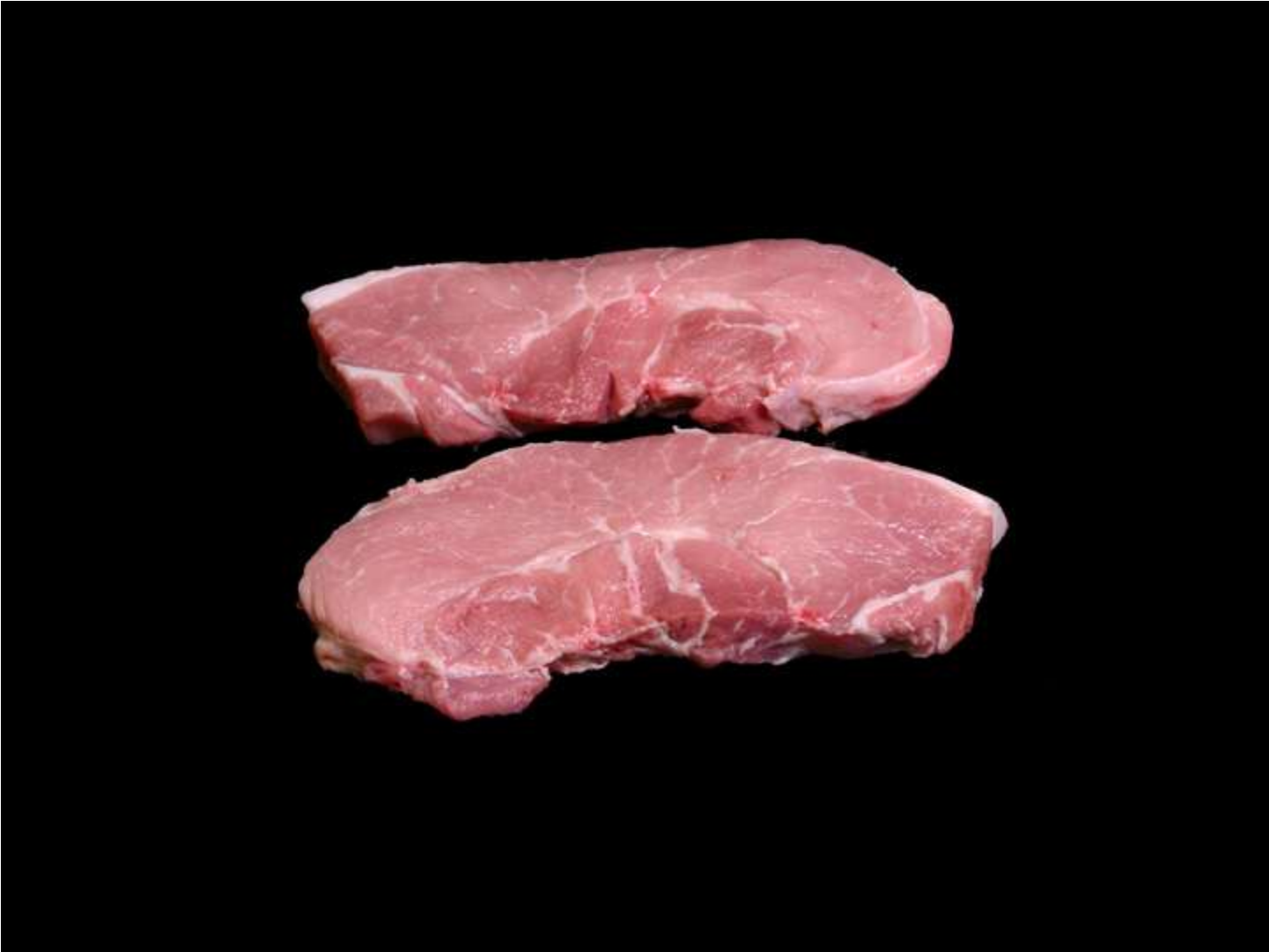
Smoked Loin Chop (Pork)



Sirloin Roast – Leg End (Pork)



Sirloin Roast – Loin End (Pork)



Sirloin Cutlet (Pork)



Sirloin Cutlet (Pork)



Sirloin Chop (Pork)



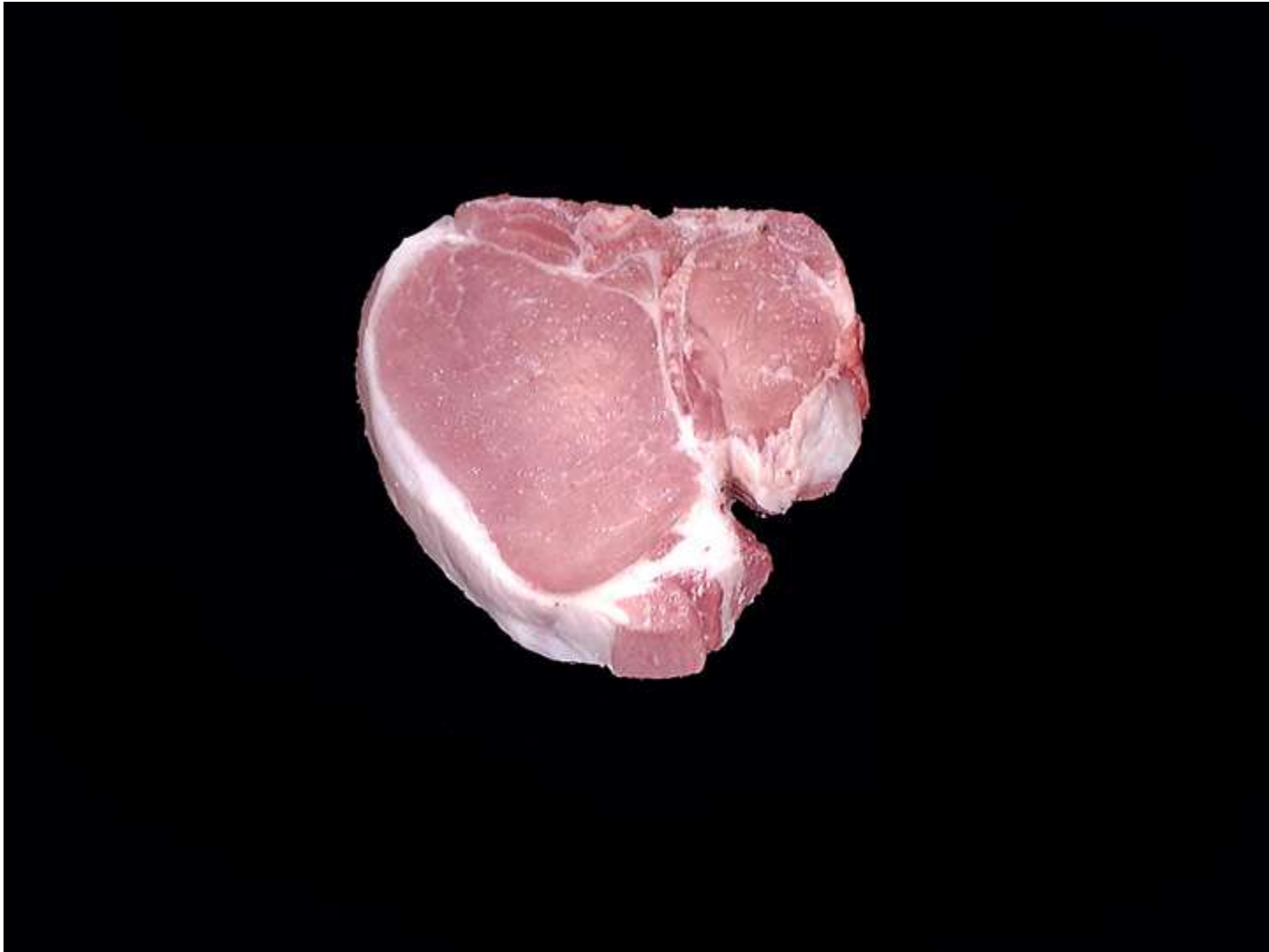
Sirloin Chop (Pork)



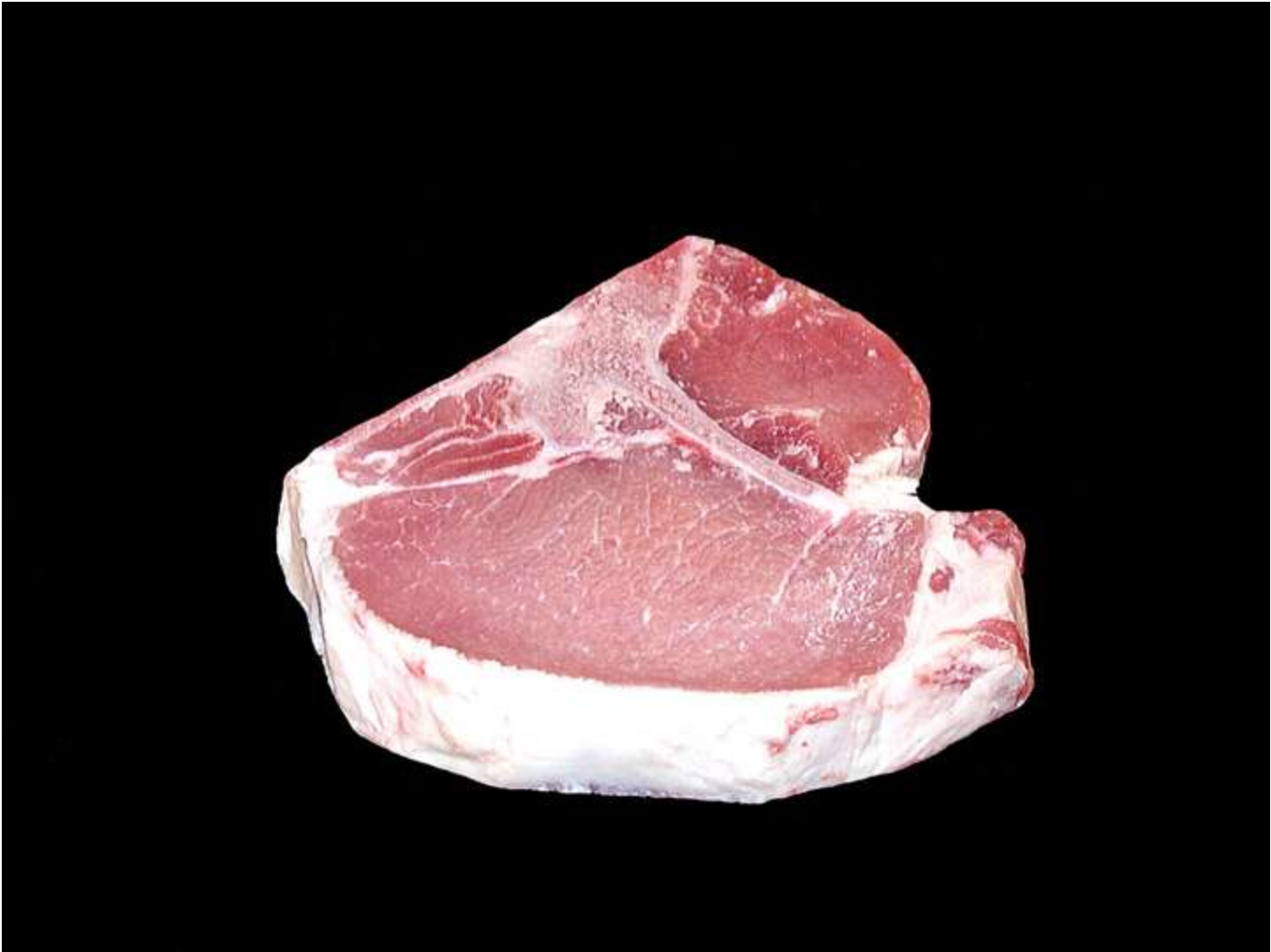
Rib Chop (Pork)



Rib Chop (Pork)



Loin Chop (Pork)



Loin Chop (Pork)



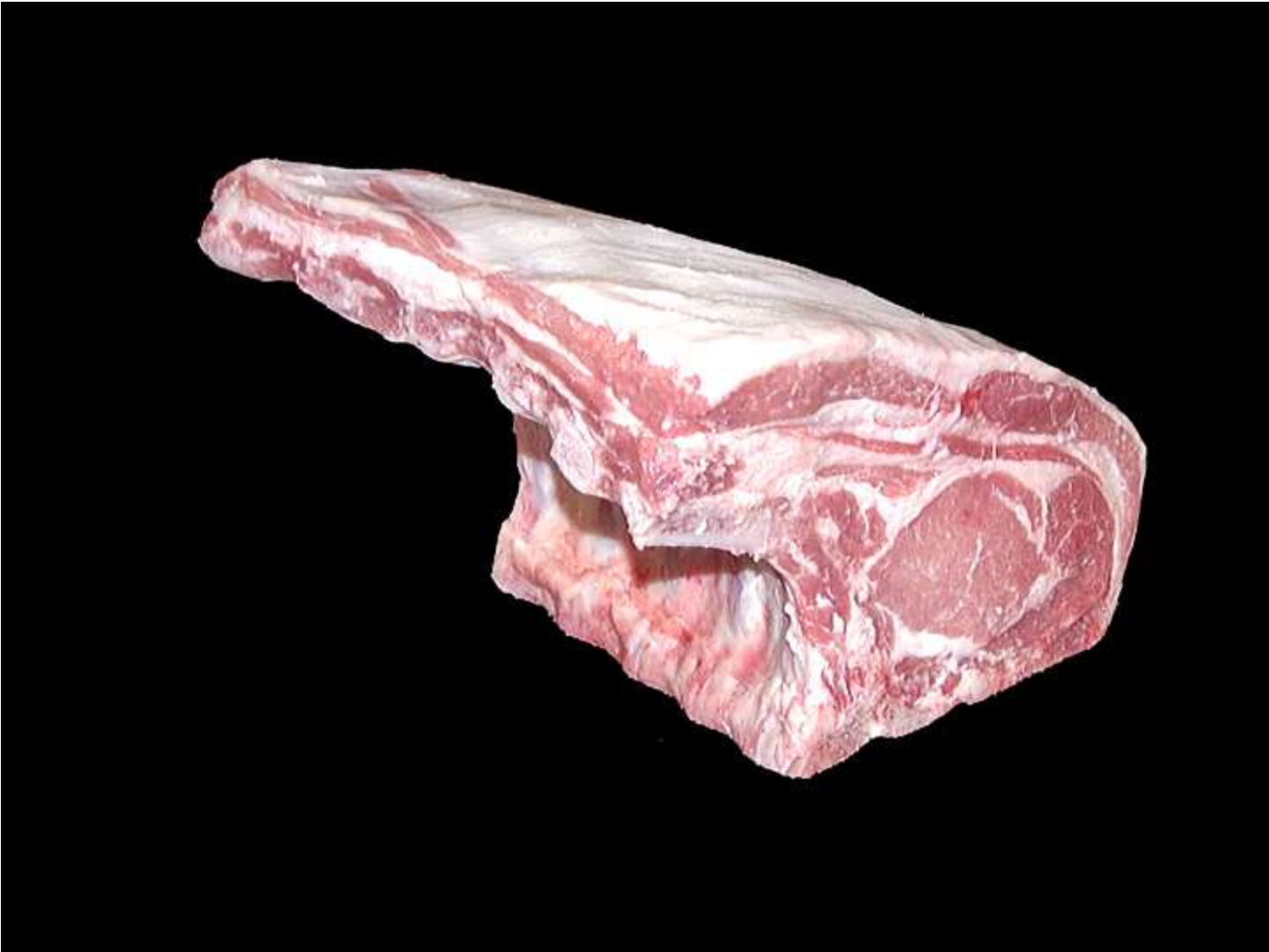
Country Style Ribs (Pork)



Country Style Ribs (Pork)



Center Rib Roast – Loin End (Pork)



Center Rib Roast – Blade End (Pork)



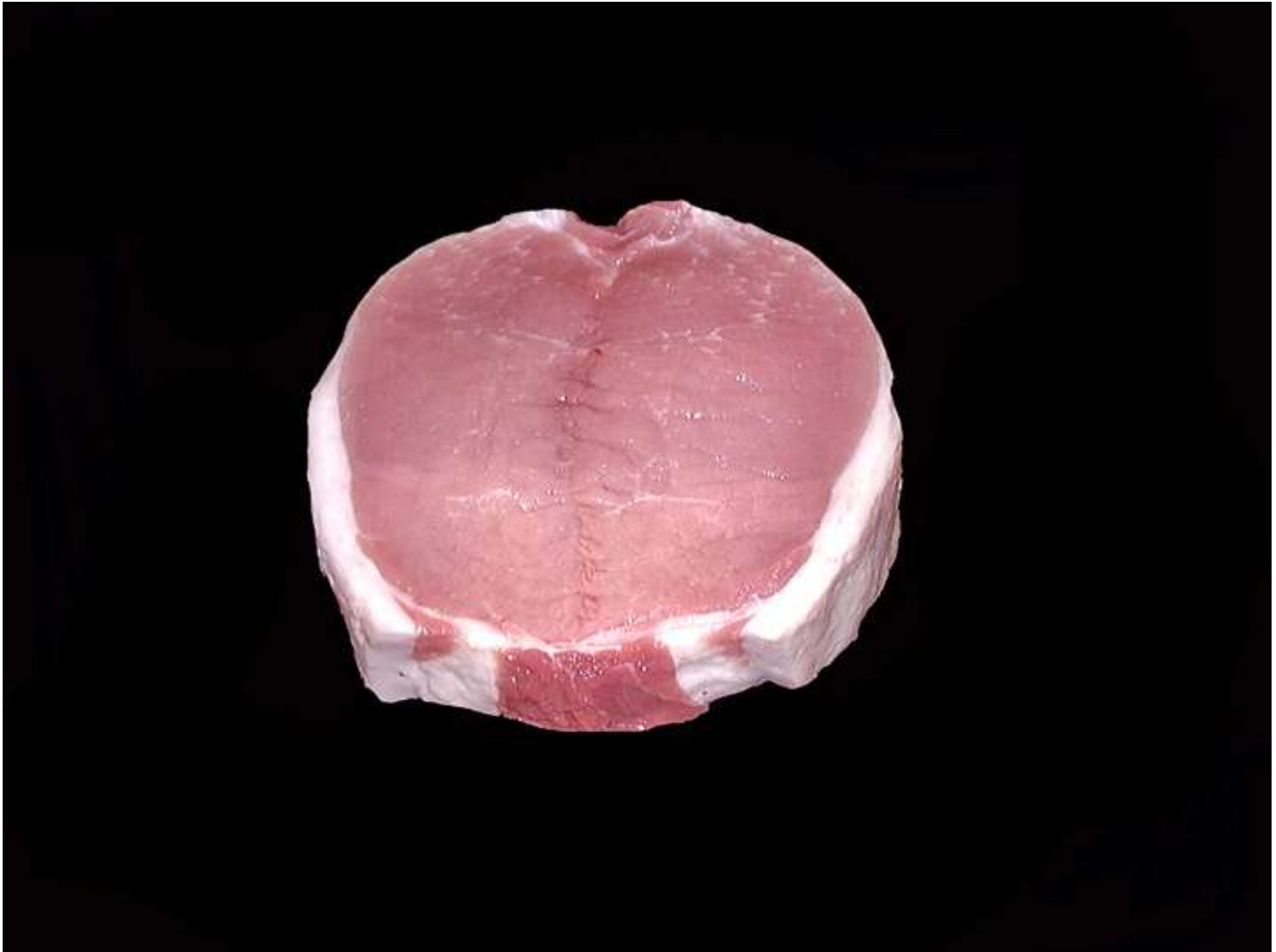
Center Loin Roast – Sirloin End (Pork)



Center Loin Roast – Rib End (Pork)



Butterfly Chop (Pork)



Butterfly Chop (Pork)



Blade Roast – Rib Side (Pork)



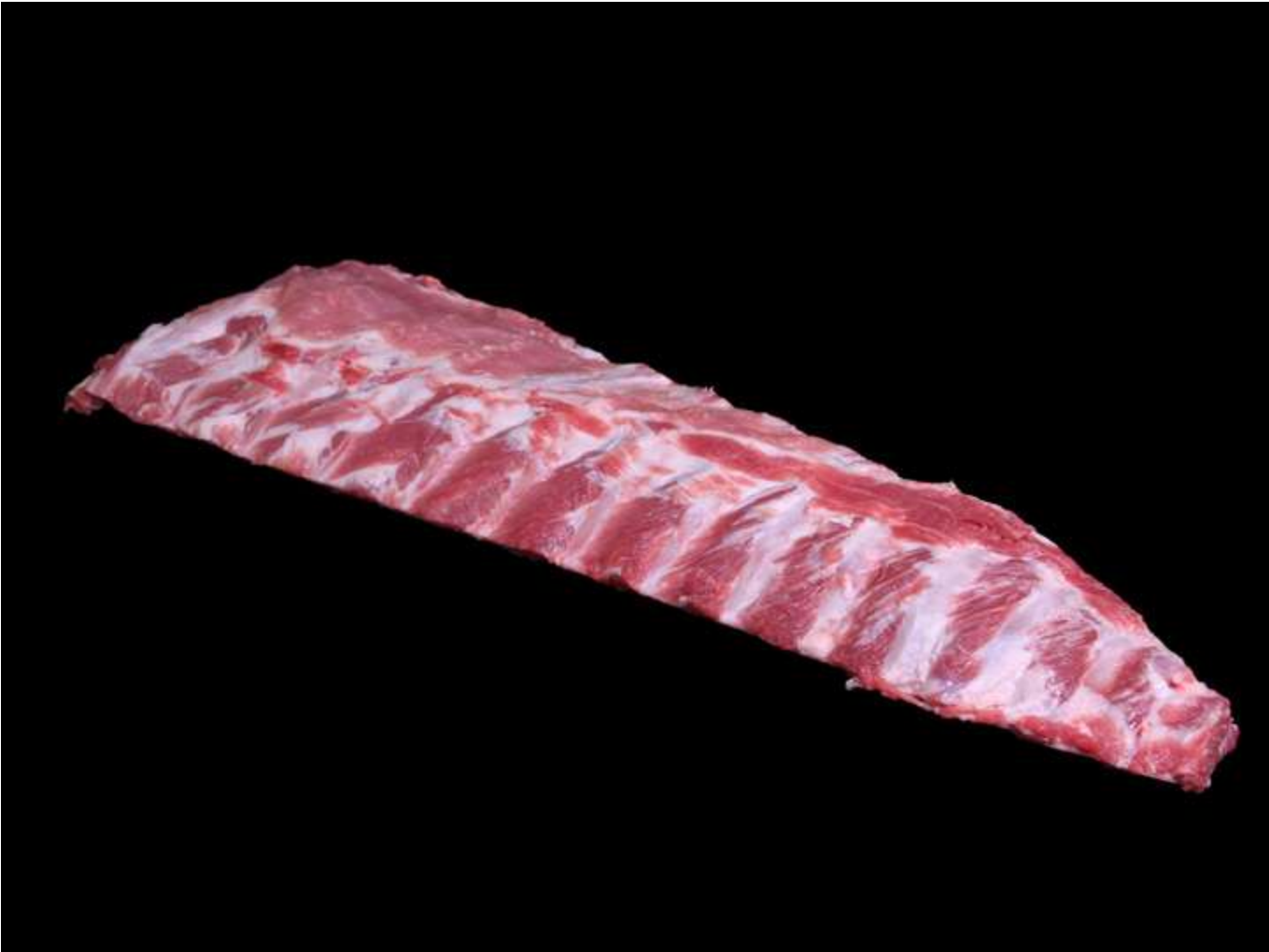
Blade Roast – Shoulder Side (Pork)



Blade Chop – Boneless (Pork)



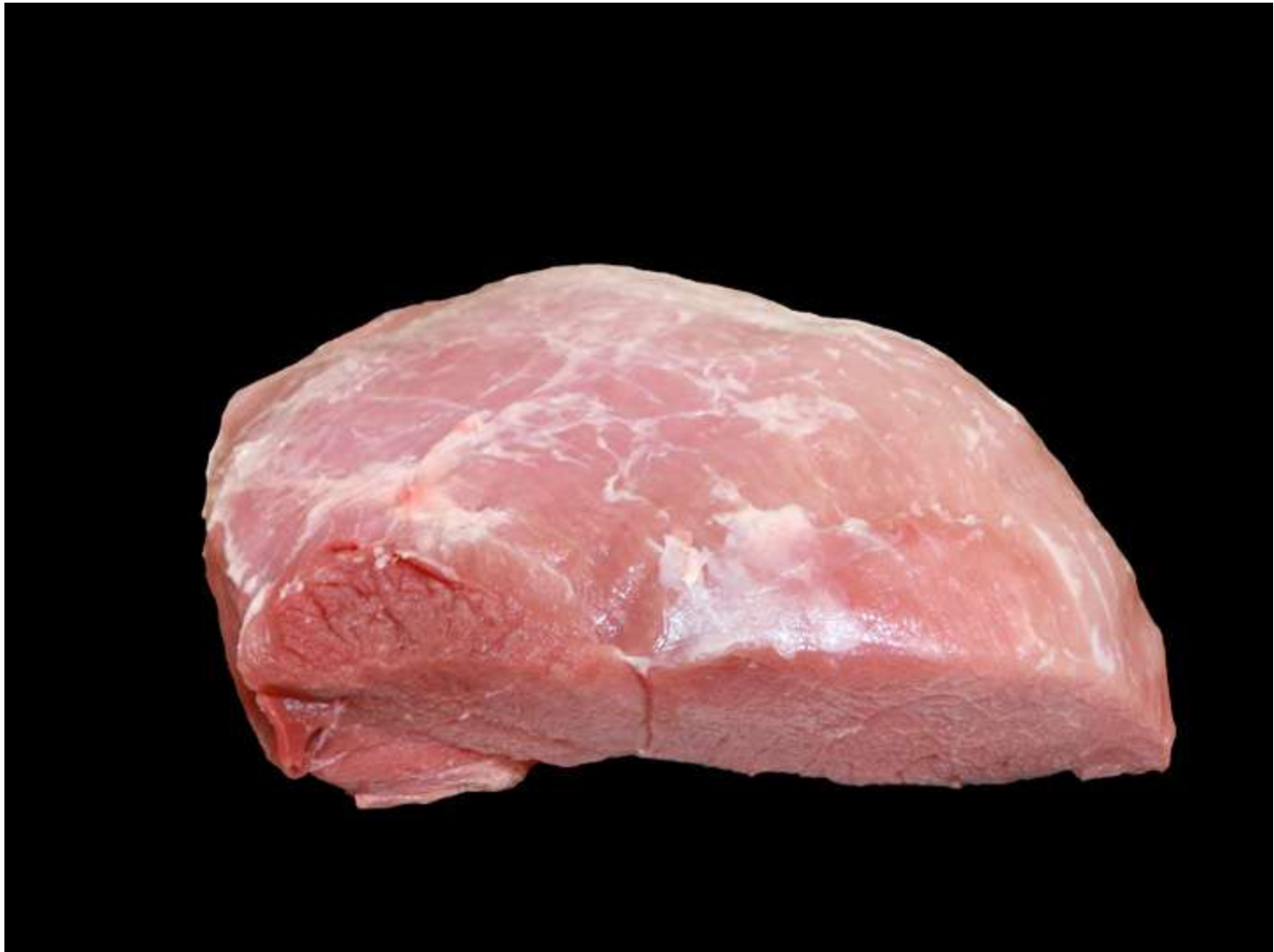
Blade Chop (Pork)



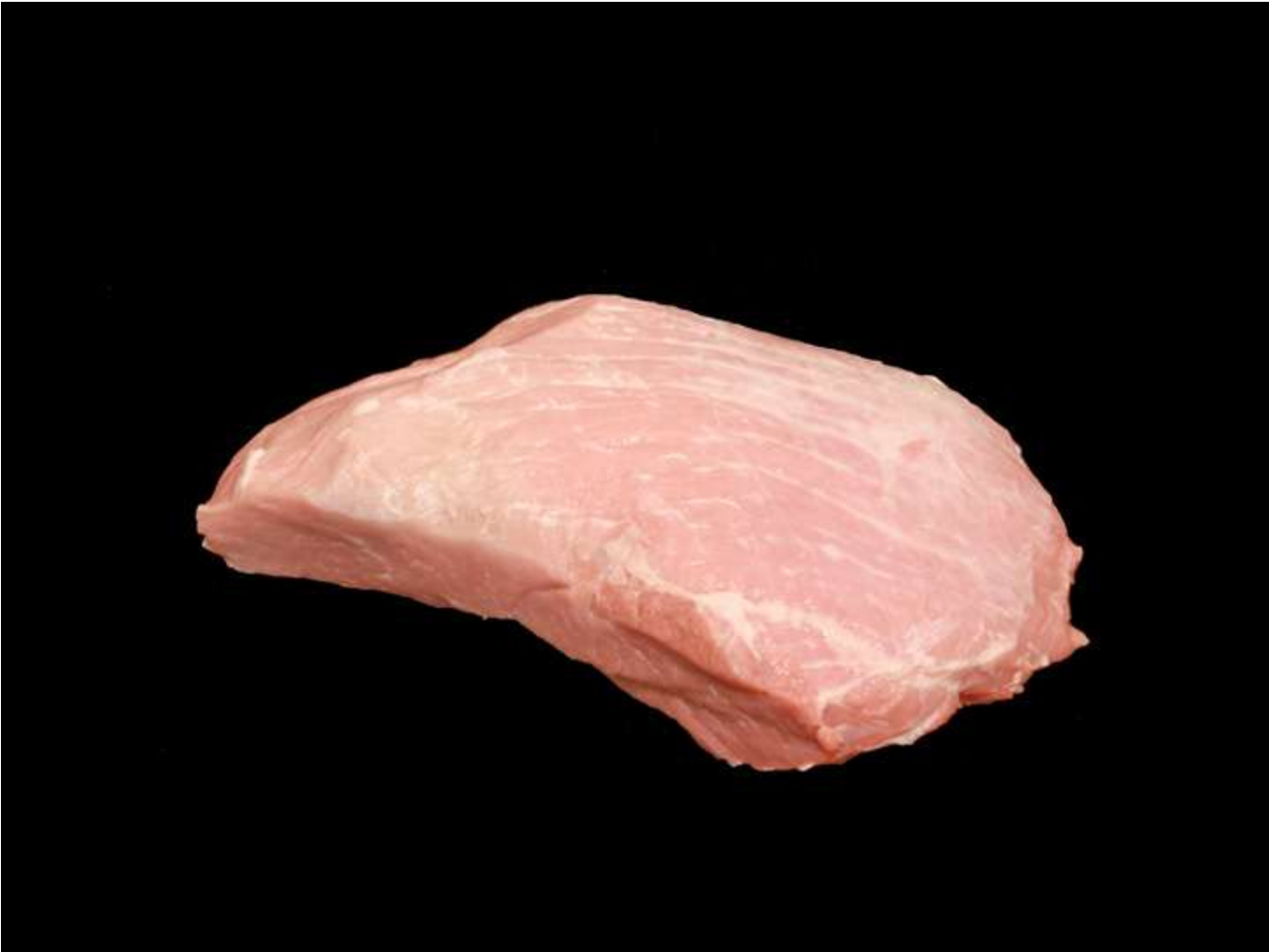
Back Ribs (Pork)



Back Ribs (Pork)



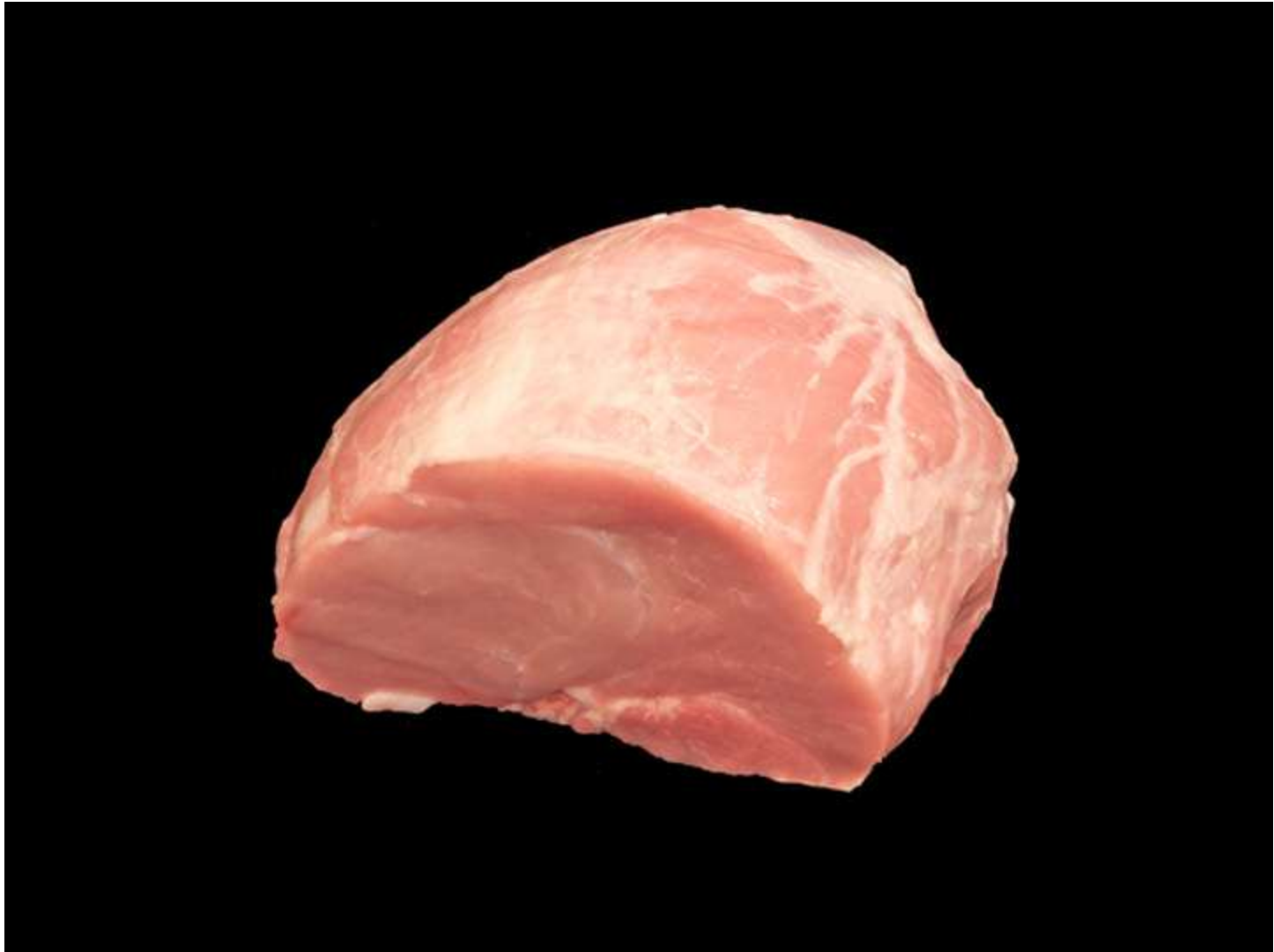
Top Roast – Boneless (Pork)



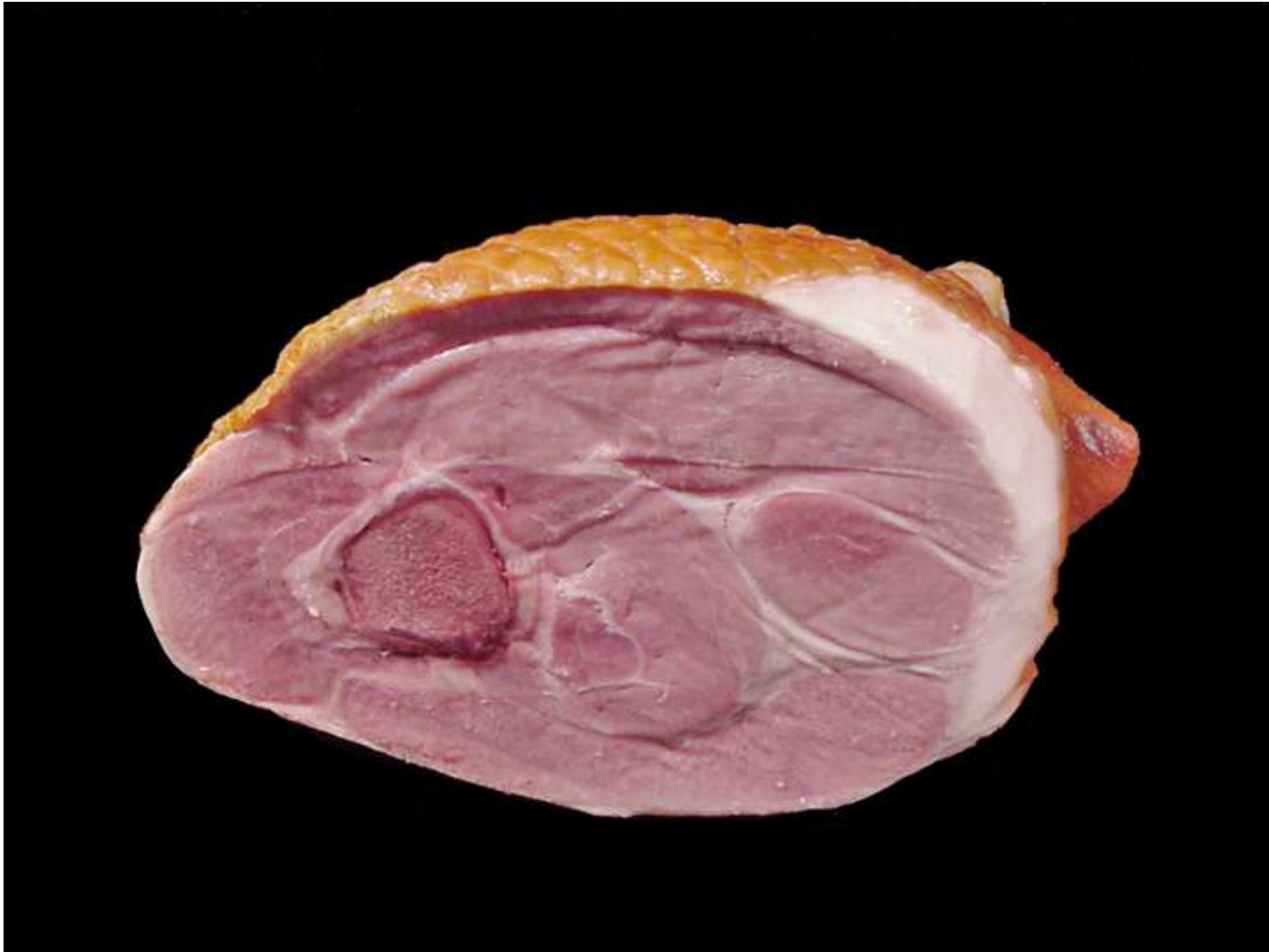
Top Roast – Boneless (Pork)



Top Roast – Boneless (Pork)



Top Roast – Boneless (Pork)



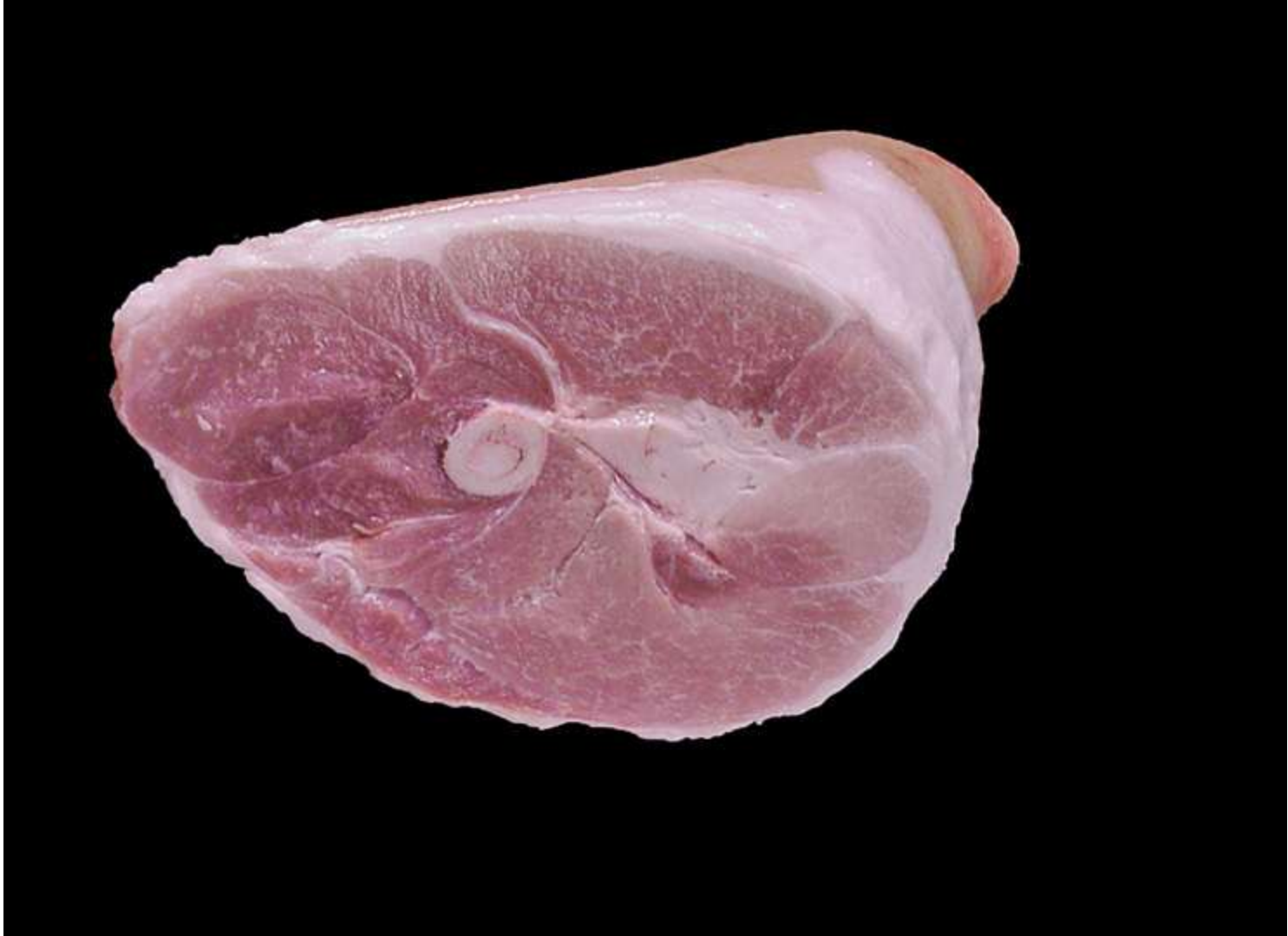
Smoked Shank Portion (Pork)



Smoked Rump Portion (Pork)



Smoked Ham Center Slice (Pork)



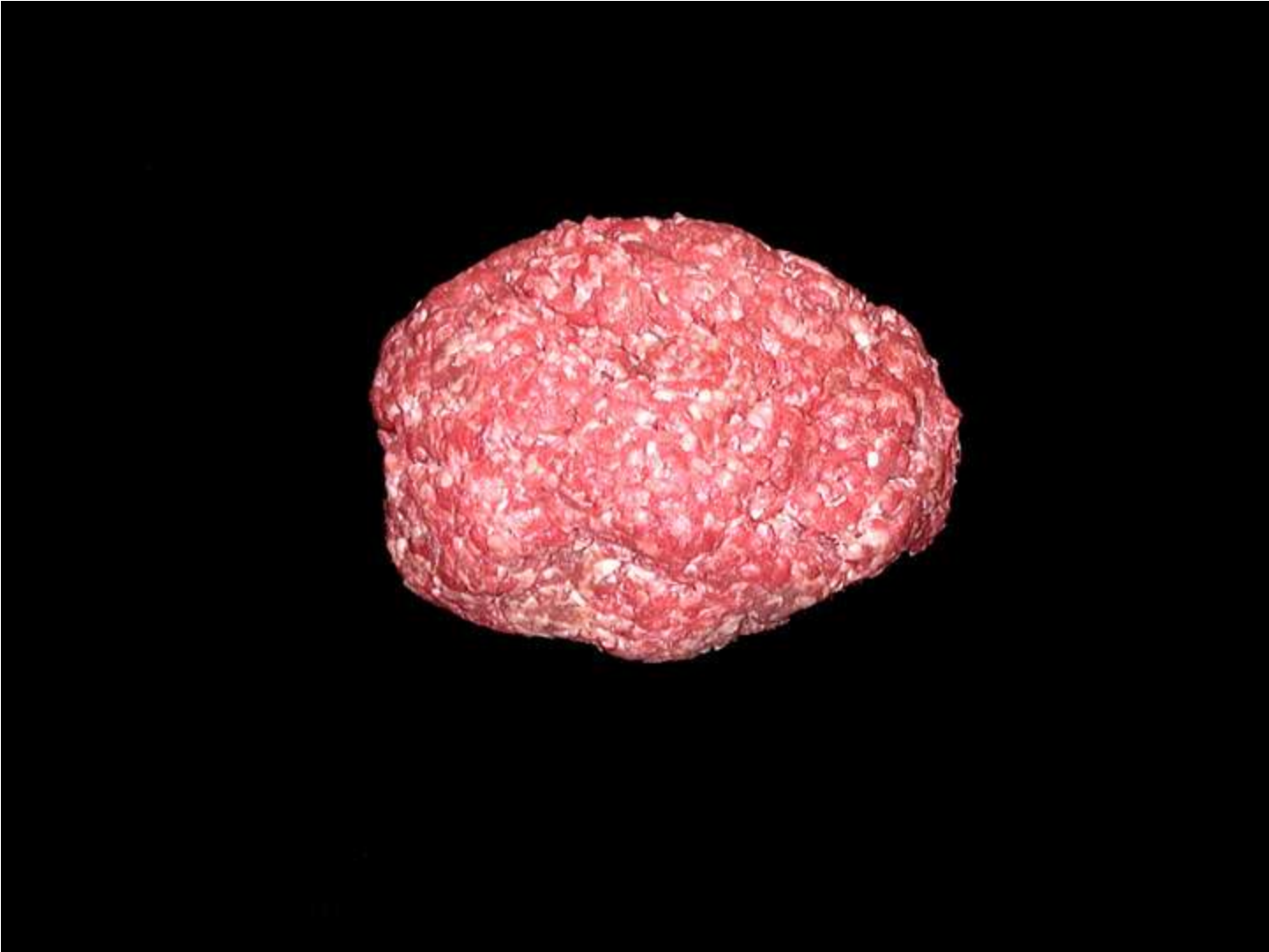
Fresh Ham Shank Portion (Pork)



Fresh Ham Rump Portion (Pork)



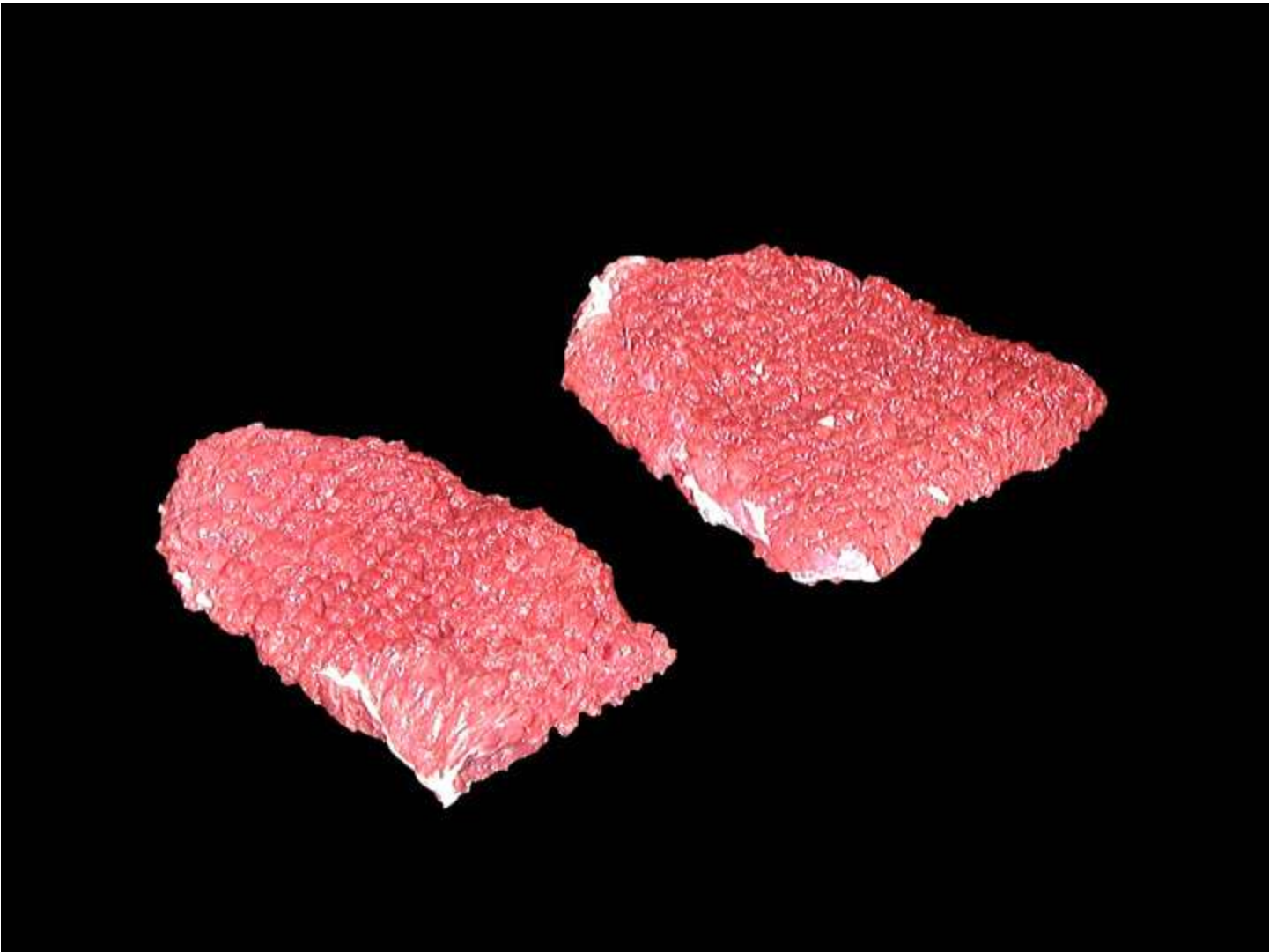
Fresh Ham Center Slice (Pork)



Ground Beef



Cubed Steak (Beef)



Cubed Steak (Beef)



Cubed Steak (Beef)



Beef for Stew



Beef for Stew



Beef for Stew



Top Round Steak (Beef)



Top Round Roast (Beef)



Top Round Roast (Beef)



Tip Steak – Cap Off (Beef)



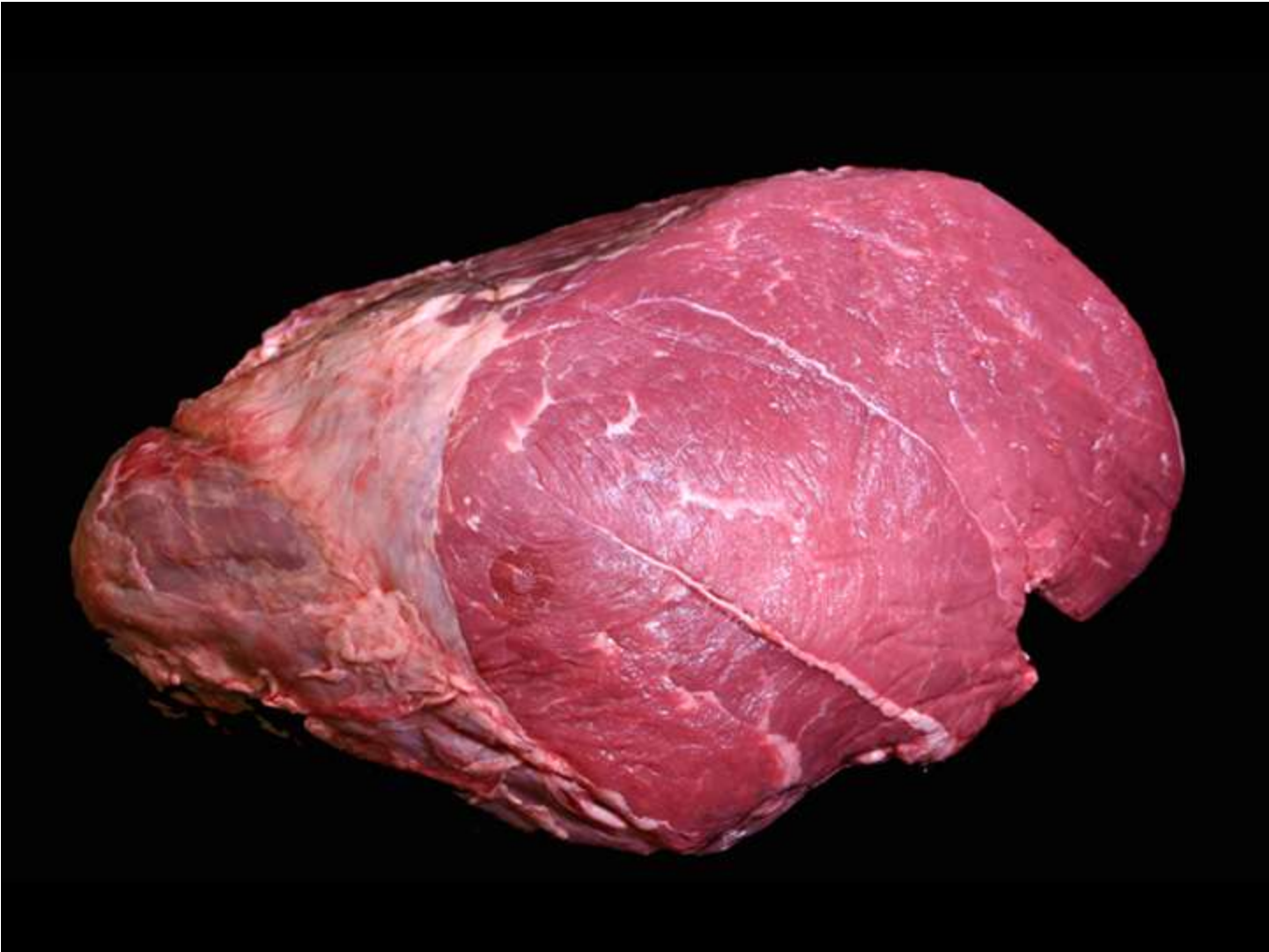
Tip Steak – Cap Off (Beef)



Tip Steak – Cap Off (Beef)



Tip Roast – Cap Off (Beef)



Tip Roast – Cap Off (Beef)



Round Steak (Beef)



Round Steak (Beef)



Eye of Round Steak (Beef)



Eye of Round Steak (Beef)



Eye of Round Roast (Beef)



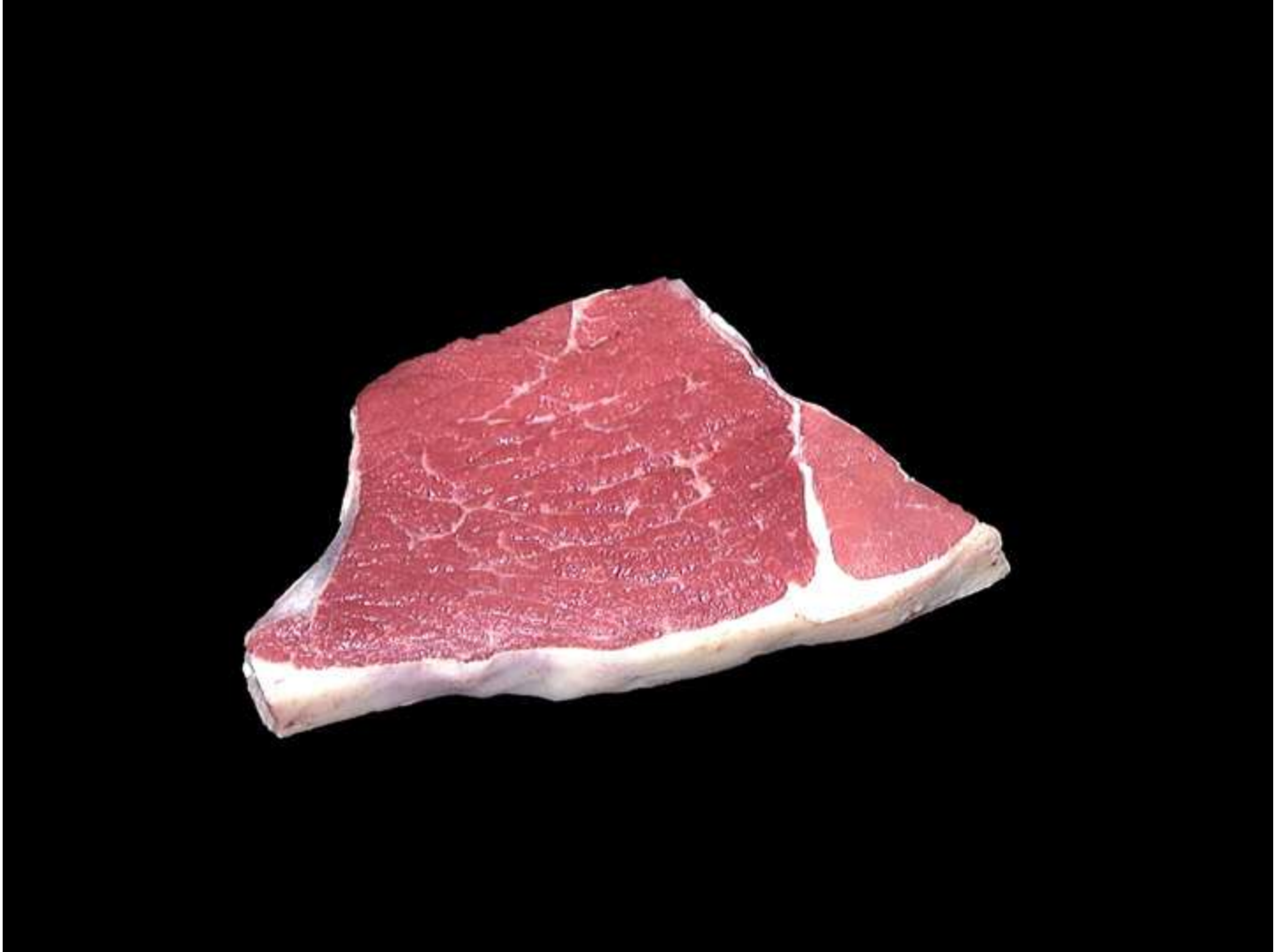
Eye of Round Roast (Beef)



Bottom Round Steak (Beef)



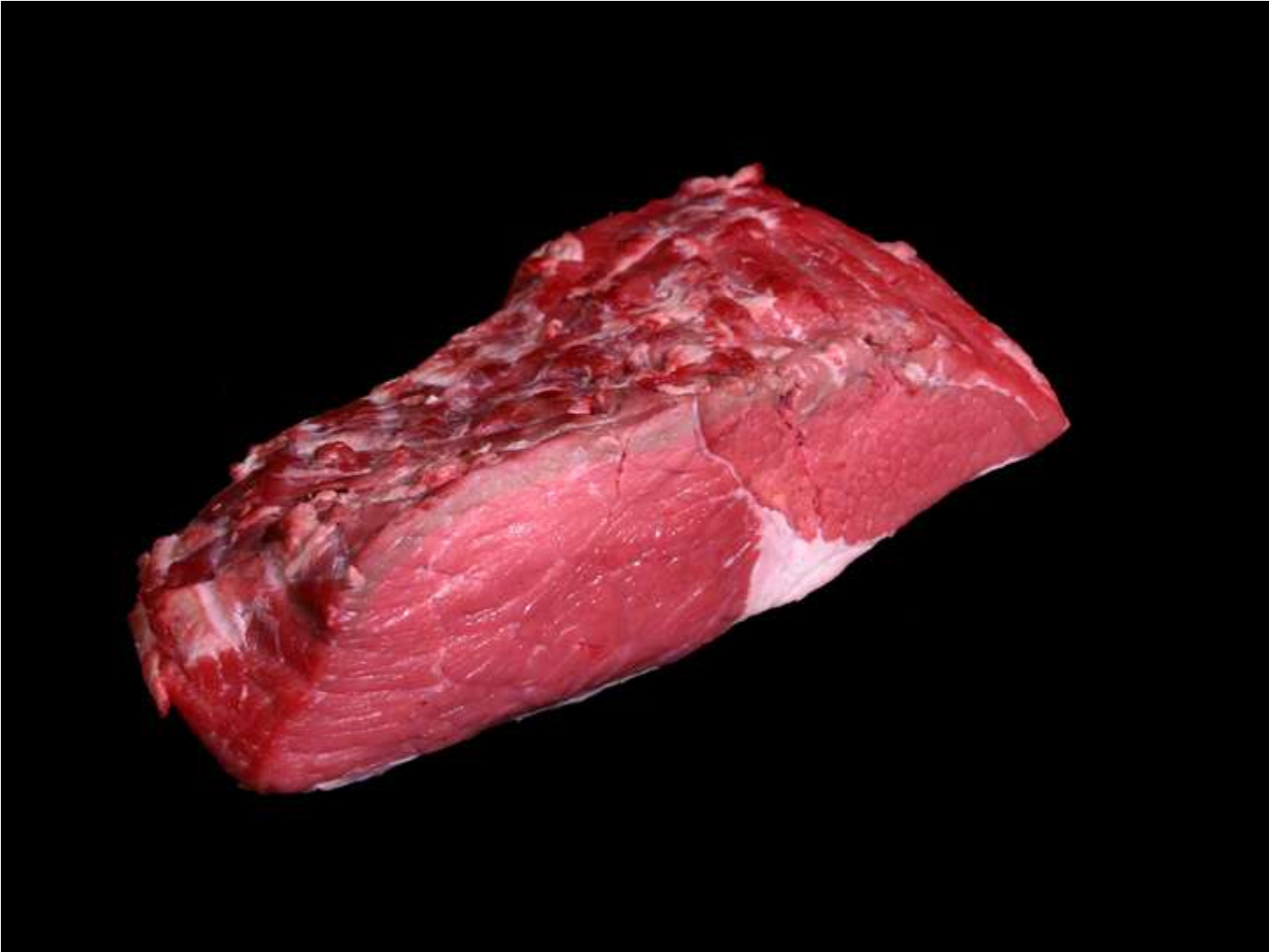
Bottom Round Steak (Beef)



Bottom Round Steak (Beef)



Bottom Round Rump Roast (Beef)



Bottom Round Roast (Beef)



Bottom Round Roast (Beef)



Rib Eye Steak – Lip On (Beef)



Rib Eye Steak – Lip On (Beef)



Rib Eye Steak – Lip On (Beef)



Rib Eye Steak (Beef)



Rib Eye Steak (Beef)



Rib Eye Steak (Beef)



Rib Roast – Boneless (Beef)



Rib Roast – Boneless (Beef)



Rib Roast (Beef)



Rib Roast (Beef)



Rib Roast (Beef)



Skirt Steak (Beef)



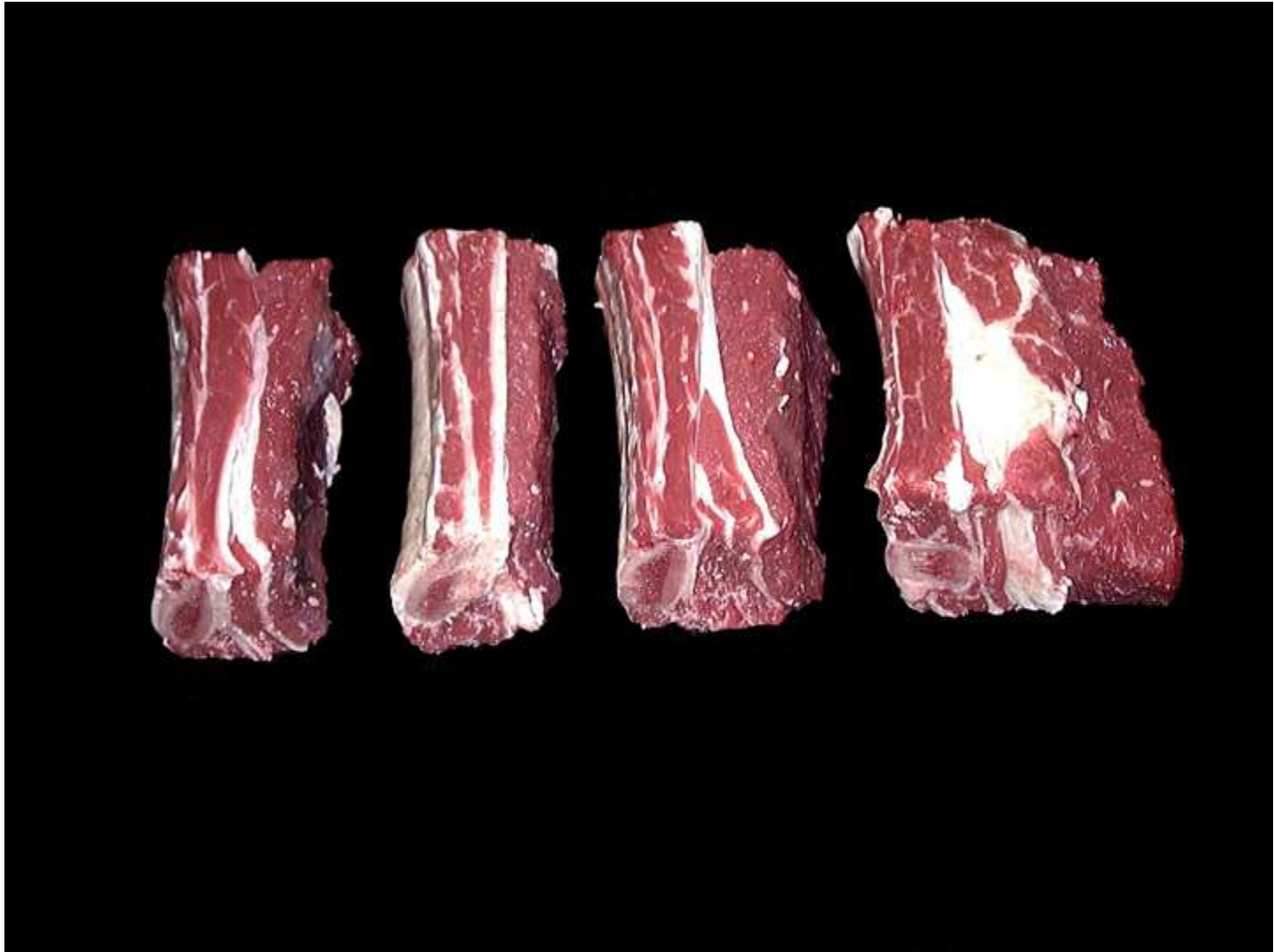
Skirt Steak (Beef)



Skirt Steak (Beef)



Short Ribs (Beef)



Short Ribs (Beef)



Tri Tip Roast (Beef)



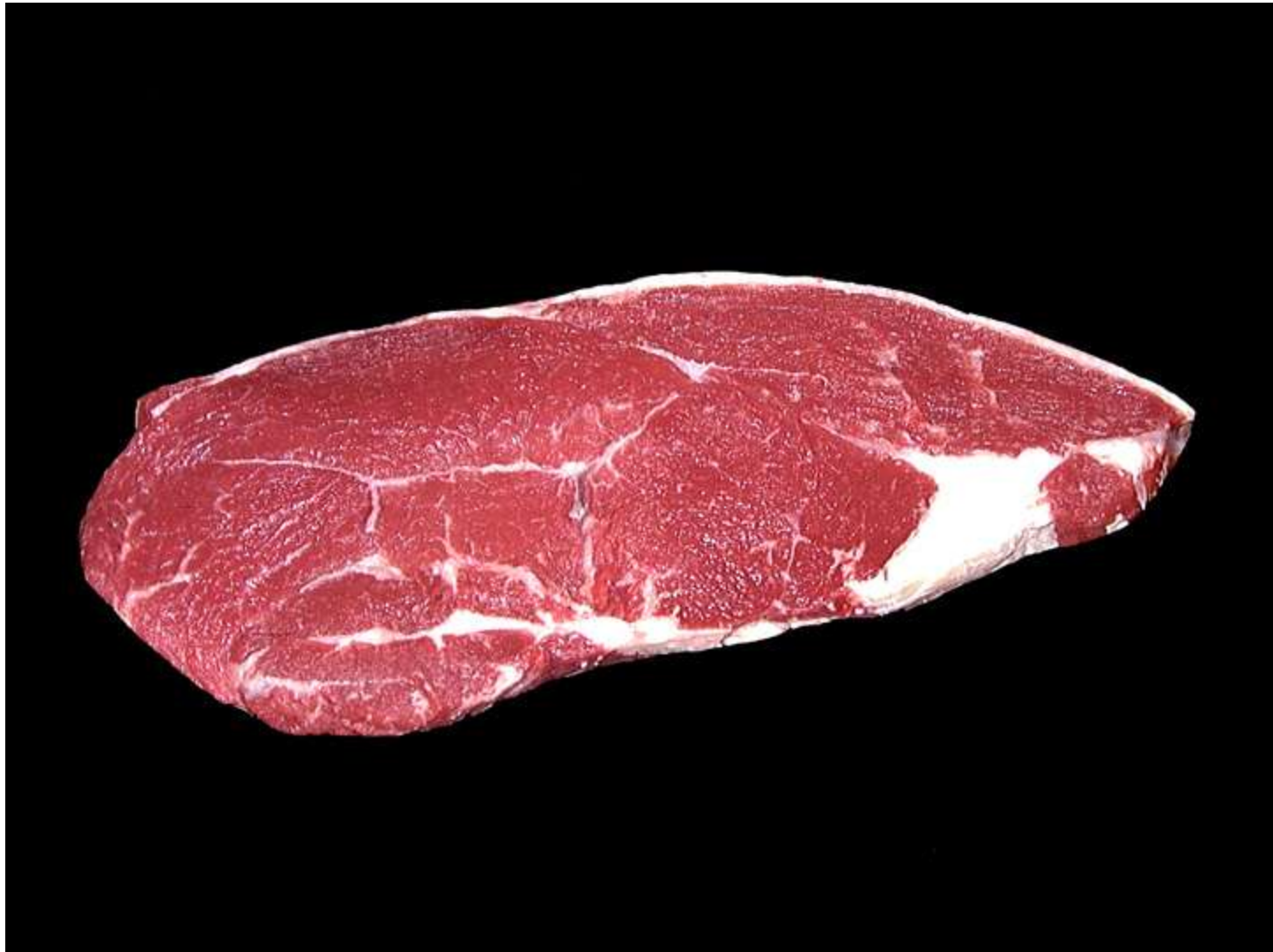
Tri Tip Roast (Beef)



Tri Tip Roast (Beef)



Top Sirloin Steak Boneless (Beef)



Top Sirloin Steak Boneless (Beef)



Top Sirloin Steak Boneless (Beef)



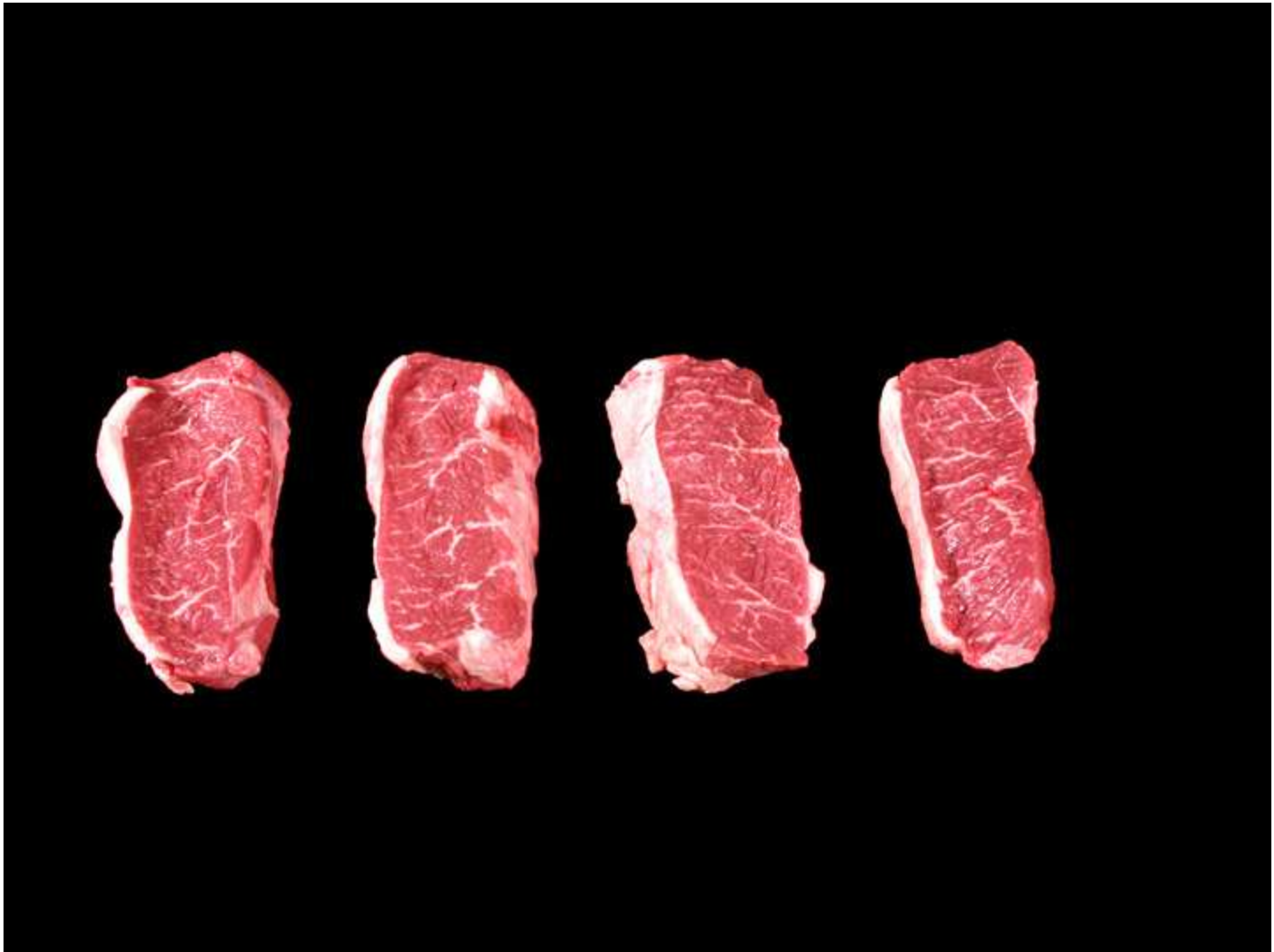
Top Sirloin Steak Boneless – Cap Off (Beef)



Top Sirloin Steak Boneless – Cap Off (Beef)



Top Sirloin Steak Boneless – Cap Off (Beef)



Top Sirloin Cap Steak – Boneless (Beef)



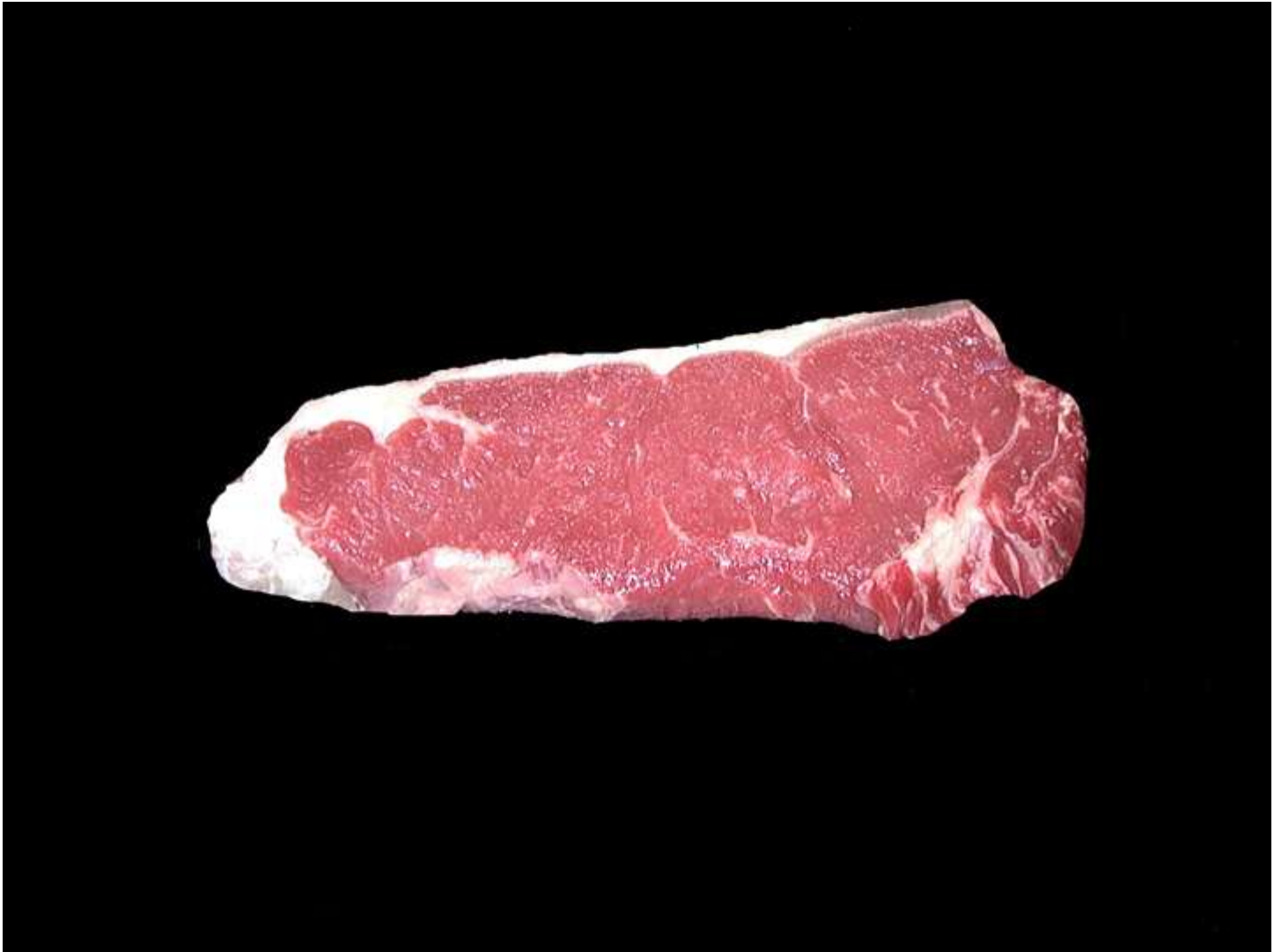
Top Sirloin Cap Steak – Boneless (Beef)



Top Sirloin Cap Steak – Boneless (Beef)



Top Loin Steak – Boneless (Beef)



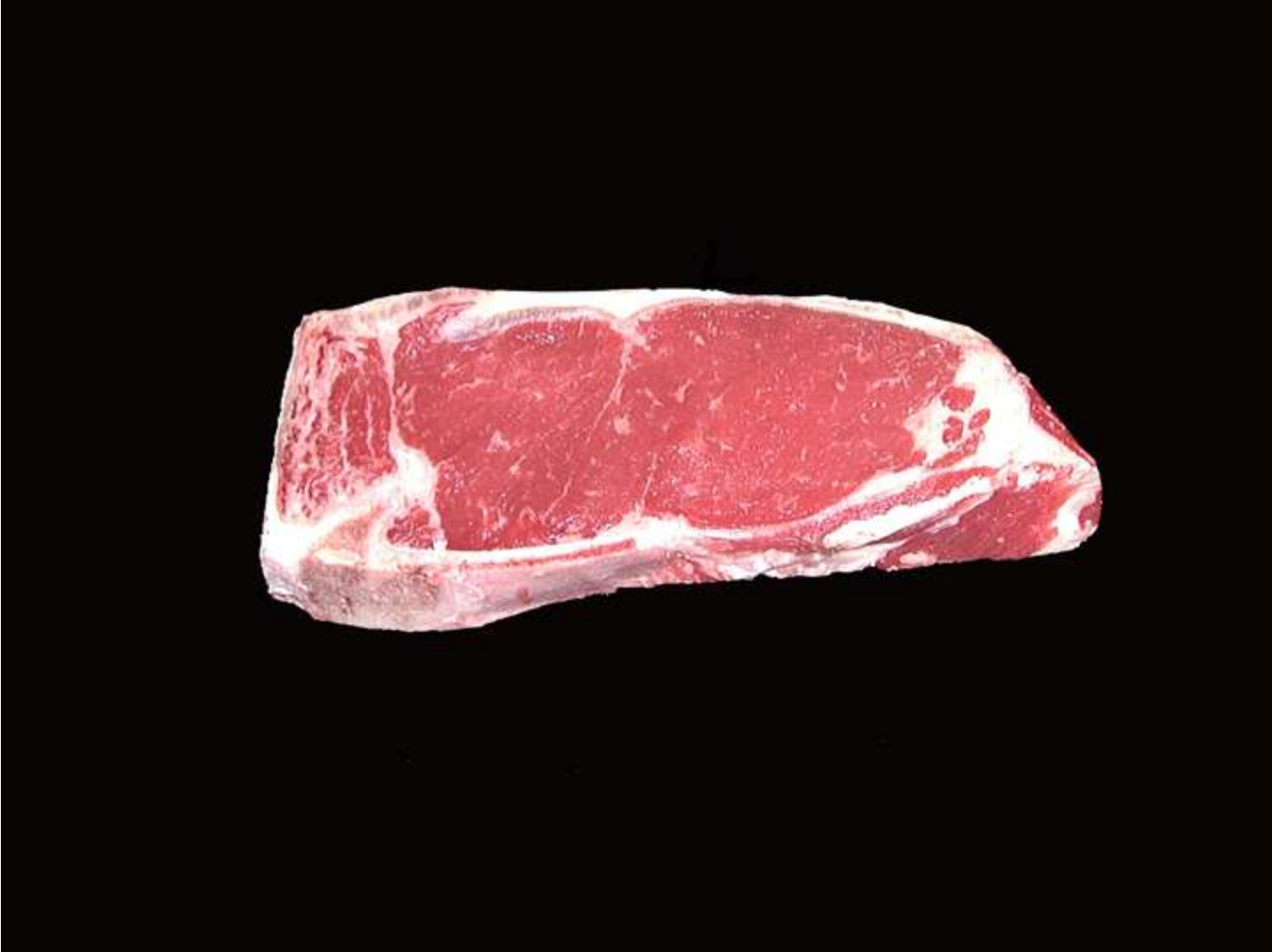
Top Loin Steak – Boneless (Beef)



Top Loin Steak (Beef)



Top Loin Steak (Beef)



Top Loin Steak (Beef)



Tenderloin Steak (Beef)



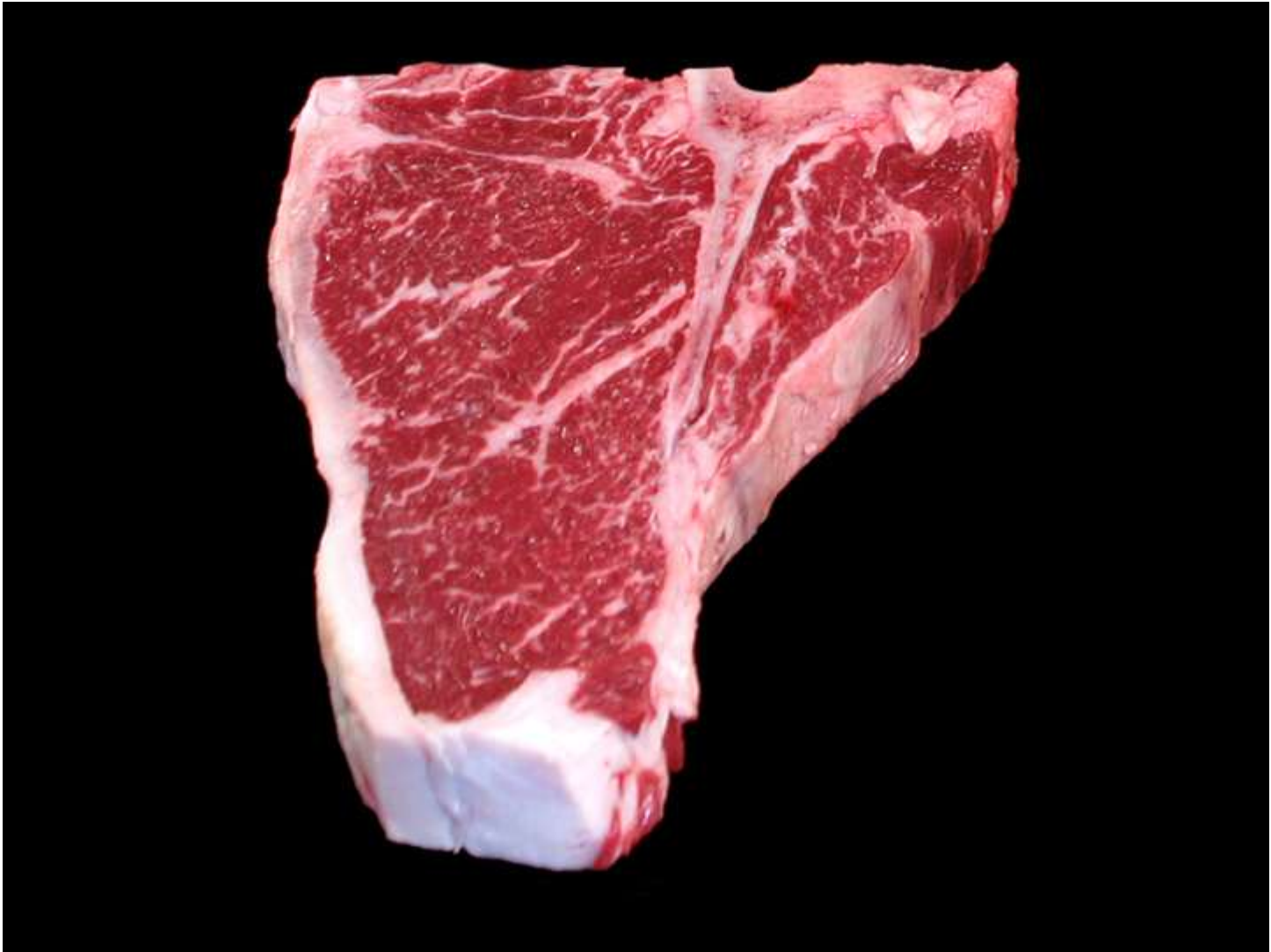
Tenderloin Steak (Beef)



Tenderloin Roast (Beef)



Tenderloin Roast (Beef)



T-Bone Steak (Beef)



Porterhouse Steak (Beef)



Flank Steak (Beef)



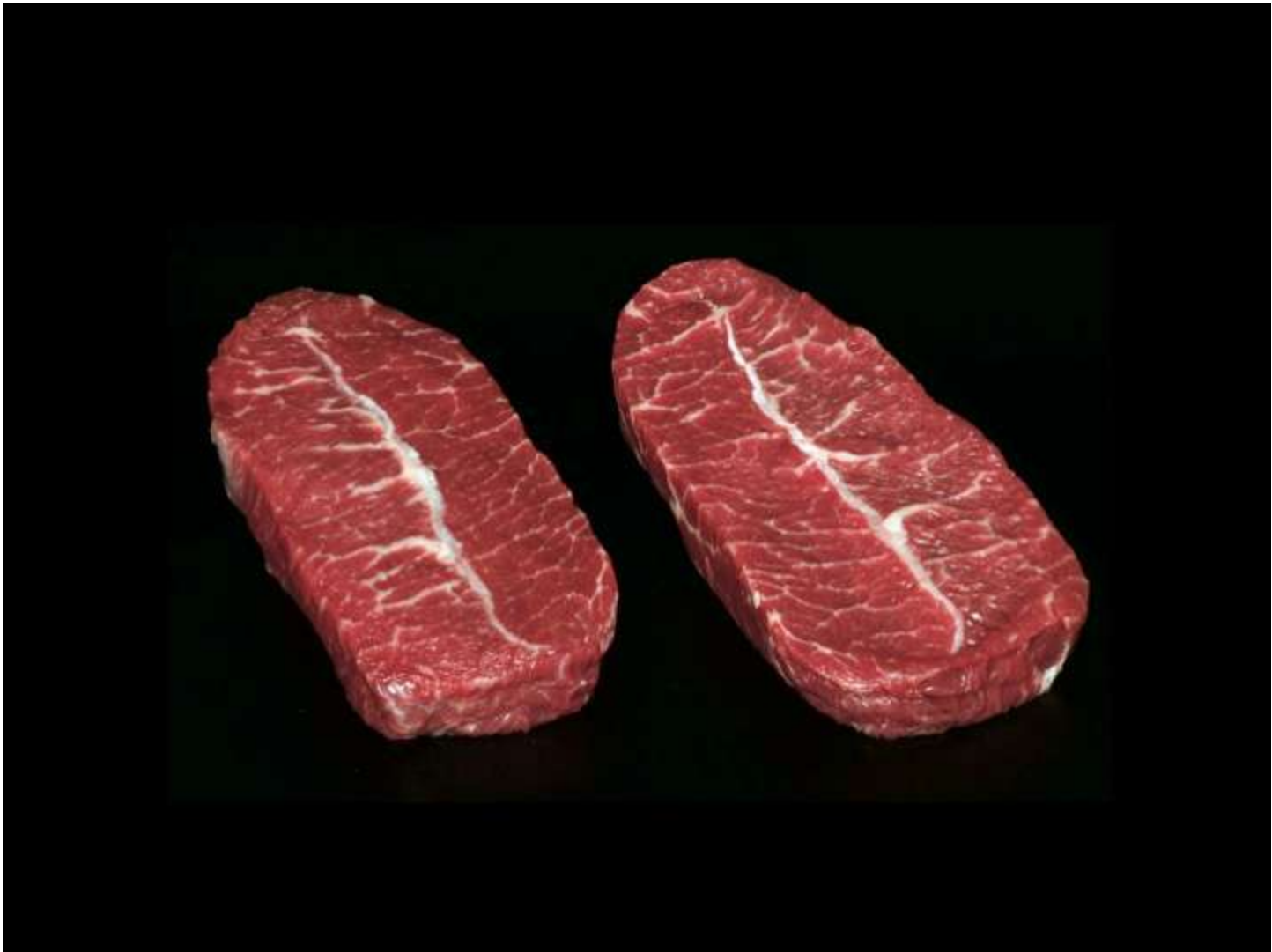
Flat Iron Steak (Beef)



Flat Iron Steak (Beef)



Flat Iron Steak (Beef)



Top Blade Steak (Beef)



Shoulder Roast (Beef)



Chuck Petite Tender (Beef)



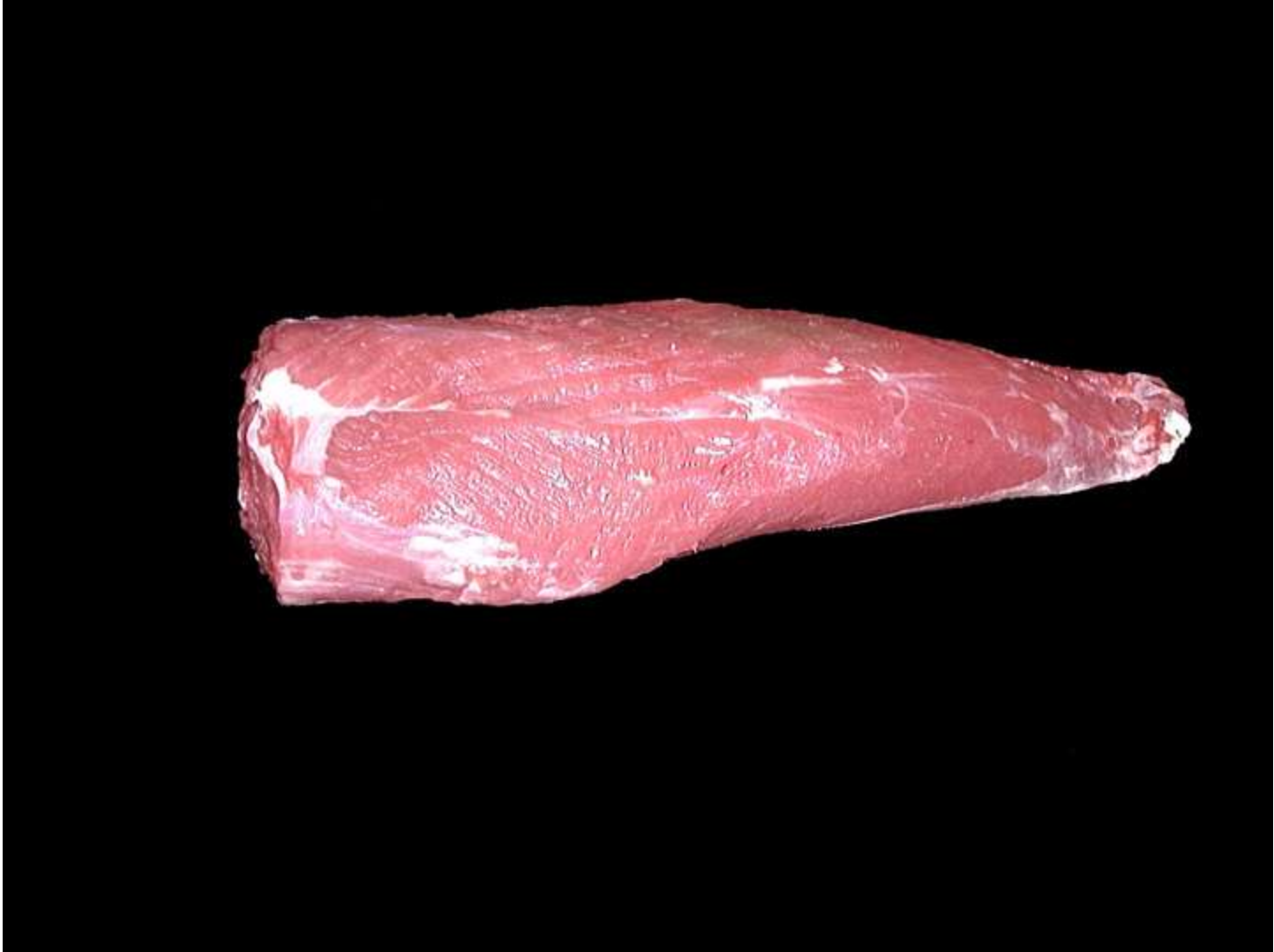
Chuck Petite Tender (Beef)



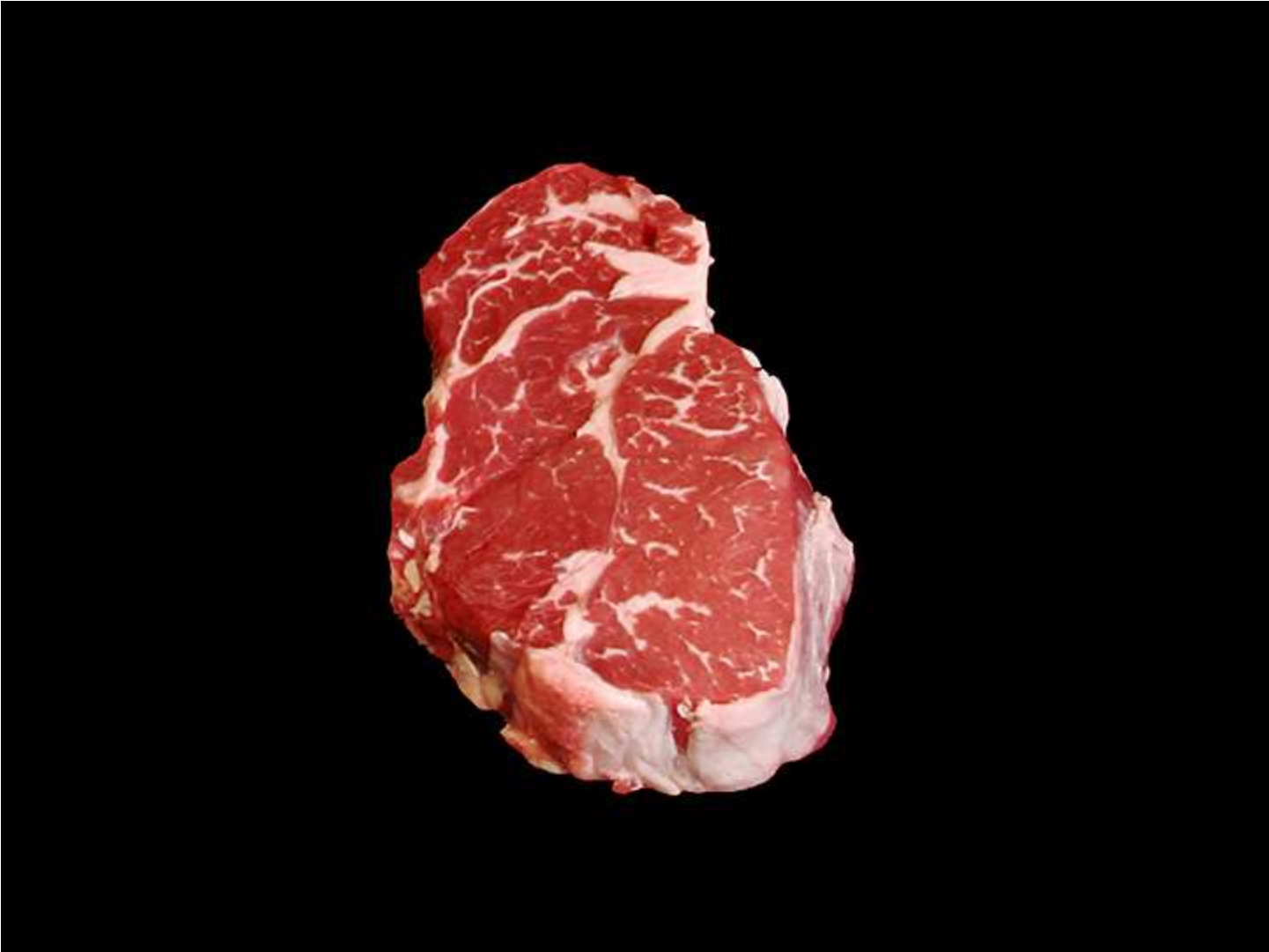
Chuck Petite Tender (Beef)



Mock Tender Steak (Beef)



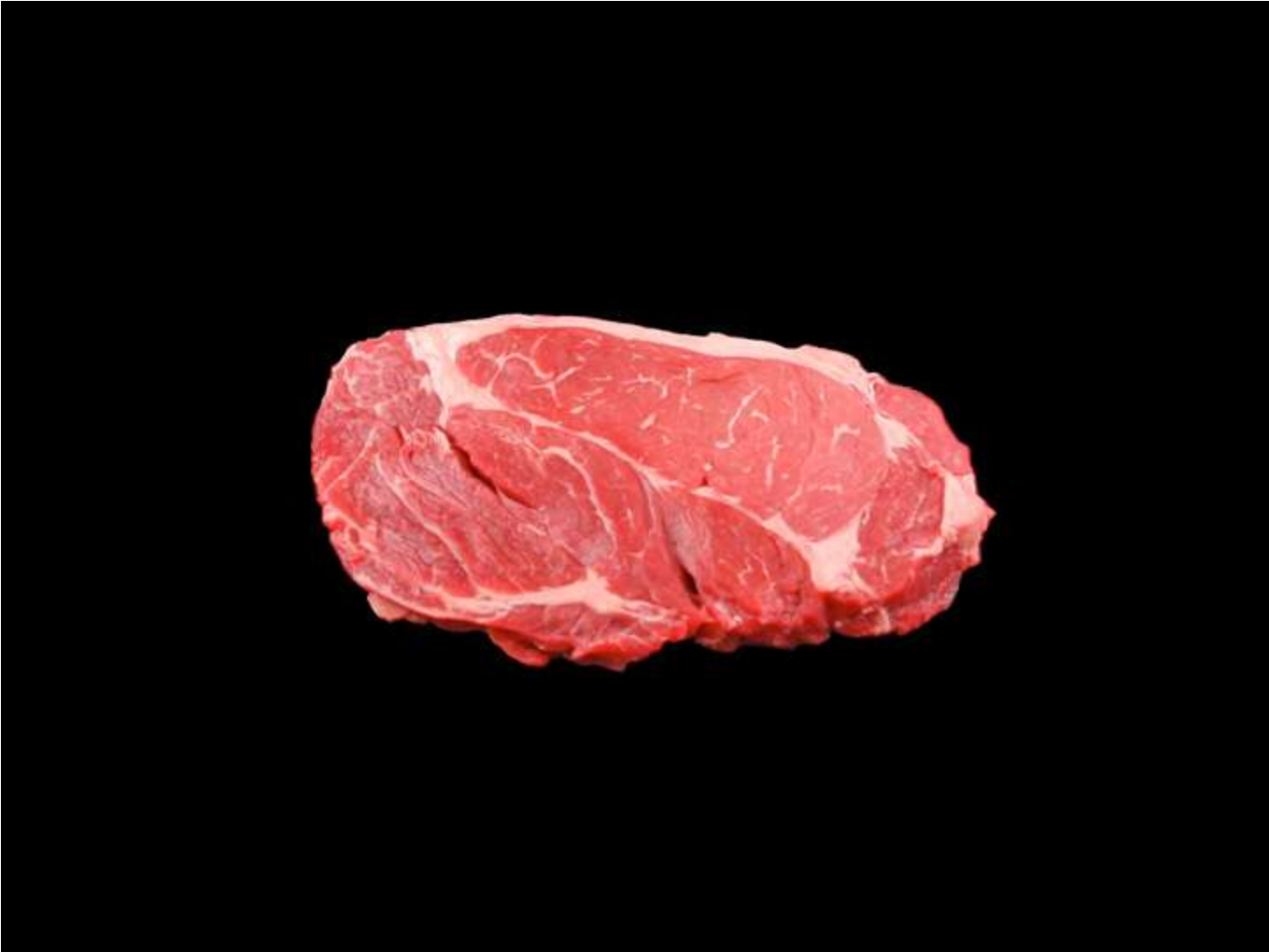
Mock Tender Roast (Beef)



Chuck Eye Steak (Beef)



Chuck Eye Steak (Beef)



Chuck Eye Steak (Beef)



Chuck Eye Steak (Beef)



Blade Roast (Beef)



Arm Roast – Boneless (Beef)



Arm Roast (Beef)



7-Bone Roast (Beef)



Brisket Whole (Beef)



Brisket Flat Half (Beef)



Brisket Flat Half (Beef)



Corned Brisket (Beef)