

Impact of Importing Feed on the System – Management Implications

University of Missouri Pasture-based Dairy Team

T. Rickard, R. Kallenbach, J. Horner, W. Prewitt, T. Probert,

B. Steevens, S. Pooch. S. Hamilton, R. Milhollin

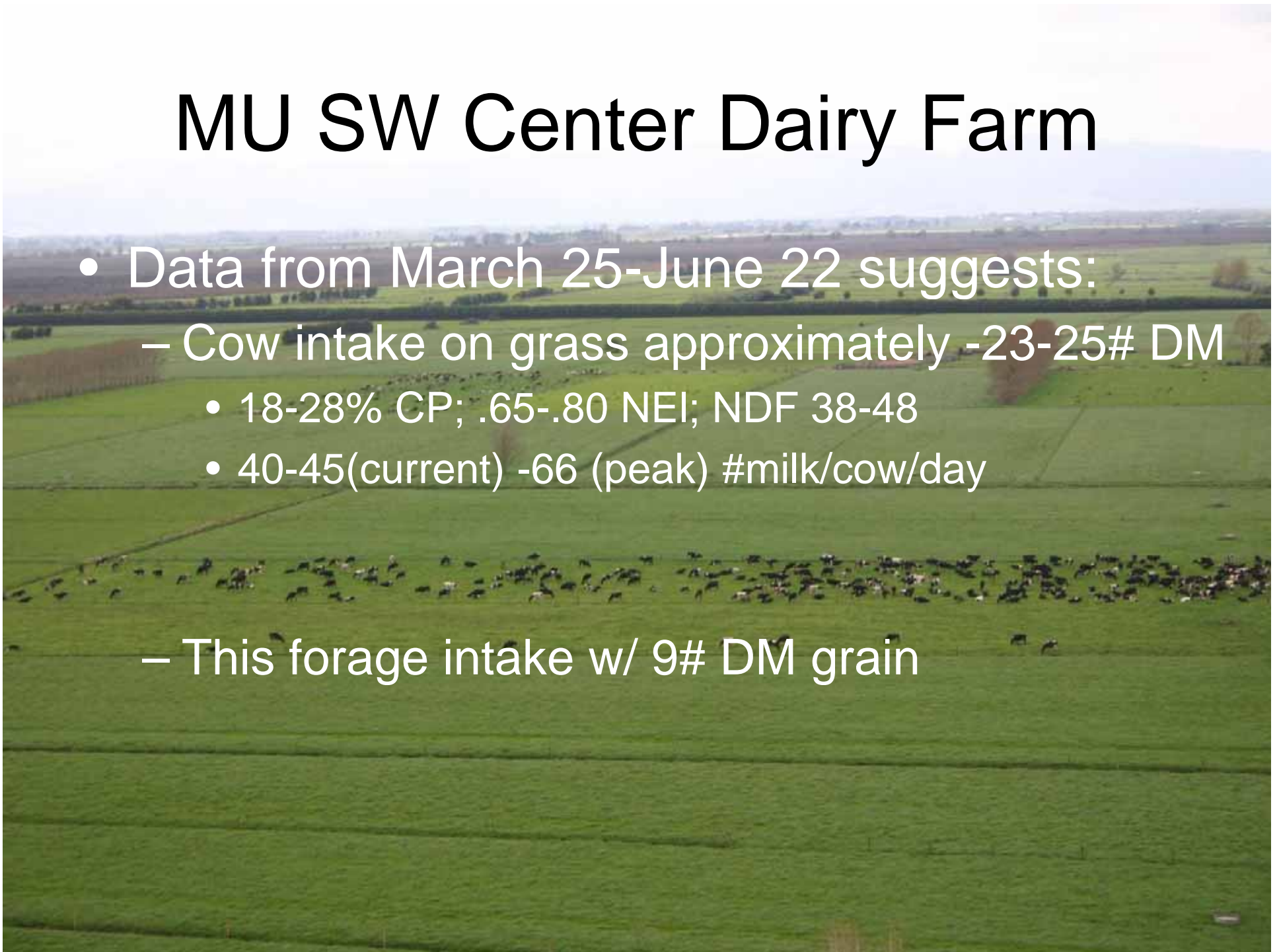
Substitution Rate?

Amount of grazable forage
displaced by supplemental feeding



MU SW Center Dairy Farm

- Data from March 25-June 22 suggests:
 - Cow intake on grass approximately -23-25# DM
 - 18-28% CP; .65-.80 NEI; NDF 38-48
 - 40-45(current) -66 (peak) #milk/cow/day
 - This forage intake w/ 9# DM grain



Published Research

- Substitution rates of:
 - 1.0# Grain = 0.3 – 0.6 # grazable forage not consumed
 - 1# harvested Forage = 0.7 – 1.2# grazable forage not consumed

Example and Assumptions

- Assume cow can consume 35# DM pasture
- Substitution of 0.5# pasture for 1# grain
- If we feed 10# grain then assume total DM consumption of 40#
 - 10# grain = net loss of 5# pasture = 30# pasture + 10# grain = 40# total
- NET GAIN of 5#/cow/day????

Questions

- Do you account for substitution directly or indirectly in feed budgets and in practice?
- Do you feel there is a net gain in intake?
- What is your “magic” number for supplemental feeding

